



Donor Impact Report 2020



From the Development Director

Alumni and friends enable LMH to be what it is today.
You are our pioneers and you enable us to pioneer.

Despite the obvious difficulties we have all experienced this year, 2020 has been an important one in the history of LMH – it is the centenary of the first women to be awarded degrees at Oxford, and also the year in which the first of our Foundation Year students received their Oxford degrees. Both have been landmark opportunities for the life of the College and Oxford more broadly.

This last nine months have thrown so many obstacles in all our paths and at LMH we have had to find new ways of operating to ensure that we continue to provide students with the very best teaching and college experience. Many of my colleagues have been flat out since March and even now as I write they are working out how to fairly manage a remote admissions process. I have been bowled over since I joined in July by their dedication to our students. They have pivoted to become IT experts in delivering online lectures, seminars and where Covid cases have forced their hand, online tutorials. Many of the staff have been running food parcels to our isolating students and some have even set up early morning fitness classes in the extensive grounds to help staff and students stay physically fit. One bright spot in this restricted environment is that many tutors have reported an uptick in the quality of students' work as a lack of a social life has benefited academic life...

One of the constants through all this, however, has been the unfailing support of our alumni and friends. You came to the rescue in the summer responding so generously to

our Covid Appeal and have helped us finish the financial year in a far better position than we had originally feared.

As we look to the near future, your support gives us the confidence to enable even greater things for our students. You understand that, with your help, we can do so much more: whether

that be ensuring the long term future of the tutorial system in subjects where we have not previously had endowed Fellowships; by supporting graduate scholars without the means to take their studies to the next level, or by enabling those for whom, by the circumstances in their home life, Oxford is but a distant dream. Together we can help them to achieve their potential at LMH.

I look forward to sharing more of our plans as we go forward.

Thank you for all that you do to enable LMH to be the very best that it can be.

**Richard Hunt, Development Director
December 2020**



How you helped us during 2020

2020 has been a difficult year without doubt, but there is also a great deal to be thankful for. Being part of LMH's community has been a blessing to us in the Development Team, as we hope it has been for you. During February and March we had the difficult task of cancelling and postponing our upcoming events. We have missed these occasions and the opportunities to see you.

From March to July we sent regular e-bulletins to stay in touch and keep the community together, and were pleased to have had so many positive and engaged replies. We established our Alumni Online Hub, our Alumni Book Club and began to put some events online*. Thank you to everyone who has joined us for an event, but particularly to those who agreed to host and speak. We also invited you to support students in more practical ways, and received a wide range of offers in response – from online yoga classes and study skills to professional telephone counselling, or just lending an ear for a chat. Thank you so much for your kindness and care at this time; our Welfare Team were delighted with this extra support.

**If you've not joined us for an online event, do let us know what might be of more interest. Like other institutions and organisations, we understand that digital events don't quite replace those in person, and with so much choice now online, you must be selective – so please share your thoughts. A good event allows you to join us from much further afield and, on dark evenings, from the comfort of home, and we should like to 'see' you online for something that piques your interest. To view upcoming events, please visit: www.lmh.ox.ac.uk/events*

The Covid Appeal

As summer arrived in Oxford, and the world began to open up a little, we had a better idea of the unprecedented additional needs of our students and tutors. The time to ask for your support felt imperative. As with many other colleges we launched a Covid Appeal in June – to help students and raise funds to offset the immediate deficit. The sudden changes to all aspects of the student experience put increased pressure on teaching, learning, finances and welfare, as well as an increased need for the technology we have come to depend on. Our academics and support staff worked so hard across all areas of College to keep the show on the road, and to plan for Michaelmas, as you will have heard from other publications.

It was heartening to see your responses to the Principal's message within a day of the Appeal being launched. Over the summer £190,000 was given – much of it left unrestricted, but also for student financial support and welfare. We are delighted to share here some messages from students and staff which show how your support benefited the College.

We know that most people have suffered in some way as a result of the Pandemic – jobs and businesses lost or scaled back, families and friends separated, and many have lost loved ones. 2021 is likely to be welcomed in more eagerly than most new years. However, we wish to acknowledge the kindness, thoughtfulness and support that the alumni community have continued to show towards the College this year. We are extremely grateful, thank you.

"The pressure on resources has been significant, with new demands on our time and many adjustments to make. Many students have lost access to the summer and vacation jobs that helped finance their studies, and domestic financial pressures have undoubtedly grown for some.

The ability to offer small grants to support those in financial need, and to enrich their experience at LMH is much appreciated, making such a difference to the students' sense of wellbeing. Much thought has also been given to encouraging their physical health using the wonderful gardens for exercise and fresh air; investments are being planned for outside exercise equipment, which will be of use for many years to come.

The financial support given by alumni is hugely appreciated and enables us to continue supporting our students, to offer a listening ear, and access to professional counselling and financial support when appropriate. It helps us respond to the challenges our young people face and to enable them to continue to study and learn with confidence and hope."

Revd Andrew Forshew-Cain, Acting Head of Welfare



"LMH kindly provided me with a pair of noise cancelling headphones in April, which helped me to achieve a quieter study space when revising and sitting my final exams in June. I'm grateful for the support that they showed me during this time - it really helped me to feel part of the LMH community despite not being there in person."

Kia Owen (2017 PPE)

"Donations to the Library are supporting a valuable increase in the resource purchasing budget – from one of the lowest of any Oxford college, to the median for a college of our size. As well as purchasing many more books in the last year, we have also improved the book requests system. In the world of weekly essays, an extra day can make all the difference, ensuring student essays are based on the latest research in their fields. We have similarly improved the service for postgraduates, sourcing (more quickly than the Bodleian) highly specialist books unavailable elsewhere in Oxford, which is transforming their research. As we move forward into an increasingly digital world, the pandemic adding extra speed to the trends, increasing our purchasing budget has given us the ability to buy ebooks for students, so the Library can support their work wherever they are in the world, without them ever having to physically visit us."

James Fishwick, Librarian



The Impact of Regular Giving

We are very fortunate to have an ever-growing community of donors who choose to make gifts to the College regularly and we would like to take this opportunity to celebrate the value of these donations.

There are nearly 900 donors giving to LMH monthly, annually or quarterly. Your donations make a huge difference to the lives of our students and the operation of the College – an impact which will be felt not only at the time of the gift, but also in years to come. During the 2019-20 financial year, 888 alumni made a regular gift, and the combined value of these donations was £493,877.

According to our records, 1450 alumni have, at some point, made a regular gift. Those who have been giving for more than 10 years, and have made a gift within the previous 18 months ^[1], become members of our *Souvent me Souviens* ^[2] donor circle. This group was established at the time of the College's 125th Anniversary – to recognise those loyal alumni who have supported LMH over the long-term. The number of alumni and friends

joining this group increases year on year and, at the time of writing, there are over 600 current members of *Souvent me Souviens*, and some have been giving to LMH for as long as 29 years!

Earlier this year, we launched a project to honour those members of the *Souvent me Souviens* group who have been giving to LMH for 20 years or more. To recognise their long-term generosity, we have created bookplates in donors' names to be placed in a book in the Library. We received wonderful feedback and are very pleased to be extending this recognition to all those who have been giving for 10 years or more, during 2021.

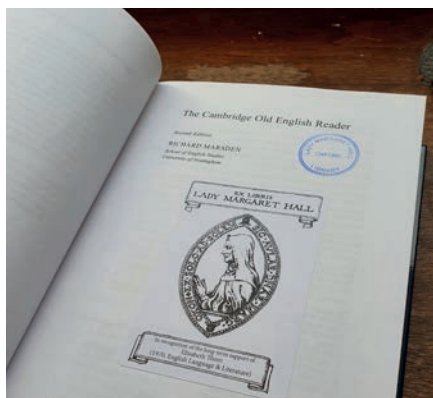
From buildings, facilities and financial support for students, to teaching and welfare, your gifts enable a transformative college experience for all students on a day-to-day basis.

Regular donations have also made significant contributions to capital projects. For example, more than 300 donors made a regular gift specifically towards the New Buildings campaign between 2007 and 2017. Another example is the £81,500 given through regular gifts each year towards Outreach activities which enable us to inspire students from all backgrounds to apply to LMH.

We greatly appreciate regular donations made at all levels and hope that others may, in the future, be inspired to join the 888 alumni and friends currently making a regular gift to LMH.

[1] Following a review of regular gifts, and by way of a response to those disappointed to have 'fallen off' the *Souvent me Souviens* list, we will include people who give within an 18 month period.

[2] The name of this donor circle is taken from the motto of Lady Margaret Beaufort, after whom LMH is named, and means 'often I remember.'



"Although my three years at LMH were a long time ago, it laid the bedrock for so much that came afterwards. My studies and tutors at LMH gave me a love of words and writing that has lasted all my life, and the confidence that I can learn and go on learning. My College room for the last two years looked out into the gardens, sowing the seed for a passion for growing, and plants and trees. Above all I made lifelong friendships at LMH (which remain untouched by the passage of time). My financial support for the College over the years has been a way of acknowledging the debt I owe it, which is beyond price. And I am very touched to have a bookplate in my name in a collection of Anglo-Saxon poetry in the Library, which will long outlast me."

Elisabeth Thom (1970 English Language and Literature)

Graduated: The first Foundation Year

Students complete their degree at LMH

We are always proud to receive our students' degree results in July and this year there was an extra set to take pleasure in – those of our first Foundation Year students. The original cohort set out on their LMH journey in October 2016, seven of them matriculating as undergraduates in October 2017. Four have now finished their degrees and the remaining three will complete next year. It is a triumph for these young people that, between them, they achieved a First, and three 2:1s.

In addition to the exceptional commitment from the students, their opportunity to succeed has been made possible by LMH alumni and friends, whose donations have funded the Foundation Year Pilot. At the start of the 2019-20 financial year, a significant donation enabled us to complete this fundraising. Since we

launched our campaign in early 2016, £1,473,126 has been so generously given. Our renewed and sincere thanks to everyone who has been involved to date; we look forward to reporting fully once the whole cohort has graduated.

As you know, the pioneering spirit of LMH has been adopted by Oxford, with a University-wide Foundation Year, starting in autumn 2022. However, there is more good news to share: our very own Dr Jo Begbie, who has led the LMH Foundation Year, will be leading 'Foundation Oxford'.

In the meantime, Jo is leading a major section of LMH's access strategy. This builds on all we have learnt through the Foundation Year since its establishment in 2016 continuing to shine a light on how we can better find the brightest students who can thrive in the rigorous academic world of Oxford.

We recognise that we need to go much further to embed this approach into both our admissions processes and our work to enable these students to flourish whilst they are with us. As such, a central and ground-breaking part of the strategy is to develop a research programme to identify gaps in our knowledge and to undertake research to find the answers. Armed with this evidence we will be able to further develop and deepen our inclusion programmes and those more widely across Oxford.

Thank you again for the role that you are playing in changing Oxford and the lives of these young people.

The Impact of the Foundation Year on me

David Howard-Baker (2016-17 Foundation Year and 2017 Music) shares his thoughts on four years at LMH having graduated in the summer

"Without the donations from LMH alumni for the Foundation Year, I would not be where I am today. I am making an impact on children's lives that would not have been possible without the world-class education provided at Oxford, which was made possible for me through the Foundation Year.

I am working at a primary school in Oxford as a teaching assistant and piano teacher. Many of the children from the school are from disadvantaged backgrounds and to be able to pass on what I have learnt during my degree is a pleasure. I am particularly enjoying the piano lessons - it is a unique opportunity for many of the children. It gives me so much joy seeing children's faces light up not only through music, but through the learning process and curiosity it sparks. Through piano lessons I aim to ignite a love for learning that spreads to the rest of their education.

The Foundation Year bridged the gap between A-levels and undergraduate study, compensating for disadvantage, providing students with a fairer chance of making a competitive application and excelling on the undergraduate course. The year was more than just an academic foundation; it started a journey of enormous personal development, consisting of strategic studying, resilience, self-care and navigating friendships and relationships.

The transition into first year was eye opening. I assumed the Foundation Year might give me an advantage. Yet I was surprised that many other music students already had this academic preparation. The Foundation Year had levelled out the playing field. This put my background and disadvantages into perspective – the Foundation Year truly had been crucial in enabling me to compete with most of my cohort.

The Foundation Year has been an essential move towards equality. It demonstrates that Russell Group Universities are missing out on students whose grades and applications are compromised by circumstances outside their control. Most importantly, talented young people from underrepresented and underprivileged backgrounds deserve to study at leading universities. If universities truly want the best and brightest to maintain academic excellence, then contextualising student performance is vital."

To read more about David's thoughts and experience at LMH, please see LMH News pages 26 and 27, or read online at: www.lmh.ox.ac.uk/alumni/connect/publications



The Importance of Legacies to LMH

We understand that those who leave a legacy will want their gift to make a lasting impact on the College. Legacies are critical to the long term future of LMH as we build our endowment to deliver and sustain our values into the future. A legacy therefore has lasting impact.

Investing in our endowment ensures the future stability of LMH by adding permanently to our annual funds. It supports and deepens our teaching,

as well as providing the additional elements that provide a full college experience – for example: maintaining the Library, offering welfare and wellbeing support, and delivering outreach activities.

The effect of this investment provides increased financial security to see LMH through changes in the economic climate. The pandemic has highlighted our reliance on other more vulnerable sources of income

(such as the profits from our conference business) to fund our tutorial teaching.

Growing our endowment is a primary goal and we will be aiming to build the endowment for a wide variety of College needs.

If you are considering leaving a legacy to LMH, please find more information online at www.lmh.ox.ac.uk/alumni/support-lmh/leaving-legacy

Margery Ord: investing in LMH for the long-term

It was with great sadness that we learned of Dr Ord's death in January. For many of you, Margery will be remembered fondly as Tutor and Fellow in Biochemistry (from 1952 – 1988) but, having held a number of College offices including those of Treasurer, Dean and Tutor for Graduates, she will have played an important role in the lives of a great many members of the LMH community.

Her life and career have been well documented this year, beginning with three eulogies from her funeral, held on 31st January in the Chapel, given by Dame Frances Lannon, by Professor David Macdonald and by Dr Garry

Brown (which can be found on our website - www.lmh.ox.ac.uk/news). In the spring, followed her LMH obituary which was written by Professor Gillian Peele and which can be found on page 88 of the *Brown Book*.

There is much about Margery's relationship with LMH, spanning almost 70 years, to be celebrated. As Professor Gillian Peele writes, "What mattered most to her was the predictability and stability of the institutions with which she identified", which was evident through Margery's generosity to LMH, supporting many of our fundraising projects over the years.



Margery Ord pictured in 2000, on a visit to Australia

Margery's legacy will be invested in the endowment, where it will support the College for the long-term and the impact of her gift will be felt for years to come.

"She was a wonderful lady and a great example of what a family community the College is for those who are privileged to have called it home."

A tribute to Margery from a former student, given in early 2020

The value of teaching - funding the costs of Fellowships

The Fellow led tutorial system is the hallmark of an Oxford education. This ensures that students are taught by those leading research on their subject areas, as well as enabling Fellows to take an interest in expanding students' minds outside of the core subject areas.

However, for colleges like LMH, this is a constant financial challenge. The annual drawdown from our endowment covers less than 30% of the annual

expenditure on teaching. We have one of the larger student communities in Oxford, and so we would like to be able to secure Fellowships as the academic foundation across key subjects in the College. Building on fellowship endowments and protecting those posts for the future will form a vital part of sustaining our values.

As we develop our fundraising vision we will share more on this with you.

100 Years of Politics at Oxford: an update from LMH

On the world stage, it has certainly been an interesting year politically; a fitting time to recognise 100 years of its study at Oxford.

We had hoped to mark this centenary in September with a celebration event looking at the journey of Politics at Oxford and LMH. We are now aiming to hold the event next year instead. As well as marking 100 years of Politics, it will also be an opportunity to celebrate the fundraising for our Politics Fellowship which we undertook between 2013 and 2016 in honour of Professor Gillian Peele.

The endowment now covers around 25% of the post currently held by Professor Robin Harding.

In the meantime, we wish to renew our sincere thanks to everyone who contributed to this funding and to our PPE academics for their support with the upcoming event. We will share more information soon. Please see LMH News 2020, p38 for Robin's most recent research update, or online: www.lmh.ox.ac.uk/alumni/connect/publications.



"It feels good to give, knowing that my modest contribution could help make a positive difference to the cause of the College in educating deserving bright young minds and pushing the boundaries of research for the good of all. It takes collective effort to maintain excellent academic standards and a wonderful collegiate environment that make the LMH experience memorable and meaningful for the students. And being once a part of the LMH student community who have benefitted from the kindness and generosity of those who came before me, I feel blessed to be in a position to now be a part of that collective effort."
Huat Soon Koh (1982 Engineering)

"It is very motivating to have received the Lindsay Prize in Engineering, and more importantly, it is rewarding to know that generous alumni are funding prizes like these to celebrate academic achievement. The prize money can help me further my skills in fields of Engineering Science – potentially beyond the syllabus, for example to improve my coding skills in a new programming language. Thank you very much for the generous donations which allow for prizes such as these to be awarded."

Arjun Bhanap (2019 MEng Engineering Science)



"Having been awarded a scholarship during my Engineering Science Degree, which I found very motivating, I was pleased to set up the Lindsay Prize in Engineering to recognise the academic achievement of future LMH Engineers. It was wonderful to hear from this year's recipient, Arjun, about what the award meant to him and his plans to use the award to further his studies."

James Lindsay (1992 MEng Engineering Science)



"I'm delighted and incredibly grateful to have received the Slessenger-Brierly Prize in Law this year. The award serves as an important encouragement that hard work is recognized. I am especially interested in private law subjects, as the technical side of law appeals to me, and I plan to pursue a career at the Bar, or in academia. As an international student, it is financially difficult during these unusual times to navigate flights and quarantine/isolation periods while travelling to and from home. The Prize has supported some of the financial pressure of remaining in my accommodation over vacations, so that I can continue to make my studies my first priority. I am also considering investing it into a German course at the University's Language Centre as I have always been interested in learning a new language."

Arthur Wong (2018 Jurisprudence)

"During my seven years at LMH, I was very fortunate to receive bursaries and scholarships which I know were made possible by generous donations from alumni. When I arrived in 2012 as a Physics undergraduate, I received a Bursary as well as partial tuition fee waivers to help lighten the financial burden of attending university. The nature of my postgraduate studies involved a large amount of travel – particularly to the west coast of the US. The financial assistance provided by a number of scholarships ensured that I could participate in conferences and collaborations abroad without the worries of financial insecurity looming.

I will be forever grateful for my time at LMH, which gave me opportunities and friends I could never have expected, having grown up in the middle of the East End of London. I will also be eternally grateful to the alumni whose generosity led to the bursaries and scholarships that enabled me to study at both undergraduate and postgraduate level at LMH."

Alex Savin (2012 MPhys Physics, and 2016 DPhil Atomic and Laser Physics)



LMH provided a nurturing and supportive environment while I was reading for the MSt in Legal Research. I received invaluable support and guidance from Ann Kennedy, who was also chair of the Law Faculty at the time. I owe the College and all its Fellows an enormous debt of gratitude. I feel deeply privileged for the time I spent at the College, and remain immensely proud of my association with both LMH and the University.

I am now a partner at an offshore law firm in the Cayman Islands, where I have lived and worked for the past 18 years. I am delighted to support the College by making annual donations, particularly in difficult times like these. It is just a small gesture of my lasting appreciation, but I hope it helps.

Neal Lomax (1995 MSt Legal Research)

New Library Chairs: first phase complete

Over the last couple of years, donations have enabled us to replace 57 of the original wooden chairs in the Library. This was the first phase of a project to upgrade all the chairs in the Library and we are very grateful to all those who have made a gift; a total of £32,000 has now been raised. Designed especially for the Library by architect Raymond Erith, the chairs have been in constant use for more than 50 years. The new chairs are made of a long-lasting, sustainably sourced hard wood, with built-in padded seats and backs, meaning that students can study in more comfort; we hope this will significantly reduce the complaints of back pain because of the chairs. As most of you will remember, the chairs in the Library could be pretty uncomfortable after several hours!

The new chairs are a wonderful example of alumni donations making a huge difference to everyday life at LMH. Thank you - the benefit of this particular project will be felt for many years to come by all those who make use of the Library.



The Library is a vital resource for the whole LMH community, but especially in the global situation in which we find ourselves currently.

Our Librarian, James Fishwick, comments: "Spaces in the central University libraries are being fully booked a week in advance and so access to our own Library is more important than ever. We have been working non-stop to ensure that LMH

provides a more complete service to students than many other colleges – some are not allowing students into their Library buildings at all, let alone to sit and study. Partly thanks to the designs of Raymond Erith, our Library has more space, and the second highest number of available seats of any Oxford college library. This means we've managed to stay open for people to drop in and find a seat without having to book in advance".

"As a licenced pharmacist from the Netherlands, I am honoured to continue the legacy of Professor Brading in the field of pharmacology, and strive to show the same dedication to research and emit a similar passion and kindness as she did. Without the scholarship in her name, my research and time at Oxford would not have been possible.

I am working for a DPhil reading Pharmacology and am researching the role of extracellular vesicles (a marker) in heart attacks and strokes. This scholarship has provided me the chance to flourish in a wonderful environment."

Daan Paget (2019 DPhil Pharmacology)



Donor Roll

*Indicates that the donor is sadly deceased

Alumni Donors 2019-2020 by Matriculation Year

LMH gratefully acknowledges the support of individuals, companies, and foundations and trusts whose gifts have been received or pledged in the period from 1st August 2019 to 31st July 2020. Their names appear in the following pages unless they have asked to remain anonymous. If we have omitted anyone's name by mistake, do please let us know.

1920s

1927
Margaret Wright

1930s

1937
Cynthia Phillips (Broster)
1 Anonymous Donor
1939
Torla Mackarness (Tidman)

1940s

1941
Elizabeth Mackenzie
1943
Mary Holtby (Graham)
1944
Audrey Hardwick
(Marchington)
Elaine Miles (Armstrong)

1946
Brigid Wells (Haydon)
1 Anonymous Donor

1947
Rachel Graham (Norman)
Marie Holland (Nicholls)
Eileen Jones (Greep)
Susan Reynolds
Sheila Voil (Danks)
Anne Wyburd (Ross)

1948
Jill Burgis (Cuthbert)
Audrey Colson (Butt)
2 Anonymous Donors

1949
Jennifer Butterworth
(Brown)
Sali Denning (Rogers)
Doris Drew (Broadfield)
Heather Goodare (Young)
Lady Hadley
(Paulina Pepys)*
Sheila Innes
Irina Kirillova (Kirilloff)
Jennifer Montagu
Sylvia Schlesinger
(Couzens)
Jean Spendlove
Janice Taverne
(Hennessey)
Priscilla Tolfree
1 Anonymous Donor

1950s

1950
Margaret Butt (Chaundy)
Alexine Crawford (Strover)
Clare Goulder (Gardner)
Shirley Guest (Hill)
Diana Holman (Hartshorn)
Joy Holmes
3 Anonymous Donors

1951
Gillian Banks
(Brimblecombe)
Valerie Barnish (Beeching)
Barbara Case (Wilson)
Sonia Fieldhouse (Browne)
Anne Kaye (Holland)
Lady Reid (Jane Harwood)
Julia Woodward (Saffery)

1952
Patricia Adams (Pardy)
Pamela Barnett
Margaret Lloyd (Harvey)
Judy Marshall (Sandison)
Priscilla Oakeshott
Elizabeth Pierce (Salman)
Margaret Stewardson
(Bryant)

1953

Diana Atkinson (Laycock)
Anne Bell (Durham)*
Lady Curteis
(Deirdre Grantley)

Celia Fowler (Harvatt)

Barbara Gasser
(Thompson)*

Jill Hamilton
(Brimblecombe)

Sonia Haslett
(Macfarlane)

Elizabeth Hennessy
(Browne)

Margaret Jarvis
(Gostelow)

Mary Mason (Collie)

Bunty Sherratt

Bridget Smith (Osborn)

4 Anonymous Donors

1954
Eve Barsham

Margaret Bonfiglioli
(Slater)

Juliet Campbell (Collings)

Susan Monaghan (Pyke)

Jennifer North (Barratt)

1 Anonymous Donor

1955
Sarah Child
Ann Ferguson

Greta Flitcroft (Seckerson)

Elizabeth Krishna (Kirwan)

Sylvia Countess of Limerick
(Lush)

Jennifer Maclean
(Thompson)

Susan Meads (Gladstone)*

Beryl Morton (Harper)

Mavis Page (Jacques)

Irene Palmer (Pizzey)

Antonia Pulsford (Mellersh)

Susan Rose (Latham)

Margaret Sanders (Wild)

Lady Sorabji (Kate Taster)

Christine Sutherland
(Mason)

Gillian Symons (Horley)

Anne Tennant
(Grant-Mangriotti)

Delyn Watt (Ingram)

Julie Whelan (Knight)

1 Anonymous Donor

1956
Helen Braverman (Pollard)

Celia Charrington (Jaques)

Emma Cross (Black)

Louise Grattan (Jopling)

Marjorie Morris (Williams)

Anne Smith (Millington)

Jean Stirling (Marsh)

Priscilla Thomas

Felicity Youard (Morton)

2 Anonymous Donors

1957
Lucy Archer (Erith)

Kate Banister (Bird)

Jenny Bowman (Newall)

Janet Connell (McCreath)

Prue Fuller (Martin)

Luisa Gunning (Cross)

Joanna Hitchcock
(Goodman)

Ruth Leslie

Virginia Makins (Shapiro)

Lady McCowan
(Susannah Harvey)

Carol Mellor (Atkinson)

Carola Mercer (Anderson)
Angela Robinson (Pedlar)
Joyce Robinson (Tattersall)
Christine Stone (Gregory)
2 Anonymous Donors

1958

Diana Brass (Buxton)

Helen Crowe (Dale)

Jenny Hammond (Gillies)

Elizabeth Hutton (Evans)

Lyn Kite (Baker)

Sarah Knight (Prideaux)

Fiona MacCarthy*

Lisa Miller (Davies)

Janet Momsen (Henshall)

Margaret Morrell

Lady Mountfield
(Anne Newsham)

Lisa Parkinson (Burnside)

Jane Reilly

Joan Rudd (Bower)

Carolyn Schofield

Anne Simor (Crowe)

Susan Treggiari (Franklin)

Elizabeth Van Dusen (Rhea)

2 Anonymous Donors

1959
Virginia Allport (Watson)

Hazel Archer Sanger
(Archer)

Catherine Delano-Smith
(Smith)

Gay Gervin

Mary Haynes (Lambert)

Deh-I Hsiung

Catherine Jarman
(Warburton)

Elizabeth Kennedy (Curtiss)

Maureen Klebanov (Norton)

Tina Lamb (Hunt)

Diana Legroux (Faries)

Muriel Pilkington (Fosbury)

Janet Robbins (Thomson)

Liz Rogers

Jenny Stratford (Lewis)

Phoebe Wainwright
(Malcolm)

Joella Werlin

1 Anonymous Donor

1960s

1960
Diana Allan (Cotton)

Hilary Almers (Turnbull)

Deborah Chorlton
(Thompson)

Christine Considine
(Maney)

Maureen Cruickshank
(Ware)

Mary Dicken (Bircham)

Ruth Ellis (Kelham)

Carol Harris (Brown)

Gill Healey (Williams)

Virge James (Taul)

Jenny Maddick (Smith)

Gillian Mawrey (Butt)

Mary Morris (Poole)

Maggie Pringle

Juliet Rogers (Curtis)

Carola Small (Martin)

Monica Thorp (Pearson)

Jillinda Tiley (Draper)

2 Anonymous Donors

1961
Nora Angel (Naisbitt)

Lady Berman
(Christine Lawler)

Diana Bowder (Gilbert)

Christine Darby (MacNair)
Mary Gladman
Fenella Heckscher (Greig)
Wendy Jennings
(Stallworthy)

Charlotte Johnson Wahl
(Fawcett)

Ann Kentfield (Hewetson)

Deborah Land (Murdoch)

Sarah Langton-Lockton

Marian Lever (Hardman)*

Jennifer Marturet
(Kirkwood)

Jane Middleton (Troop)

Elizabeth Newson (Shaw)

Hazel Shellens (Prest)

Anne Udal (Jackson)

Joanna Watson (King)

Georgina Winkley (Smart)

Jenny Woodhouse (Street)

3 Anonymous Donors

1962
Virginia Conybeare
(Morgan)

Jane Foster (Flower)

Diana Guy (Eade)

Everild Haynes (Williams)

Mary Jacobus

Carolyn King (West)

Ann Marcus (Edwards)

Marion Michell (Cutler)

Marianne Neville-Rolfe

Sandra Peterson

Rosemary Quillinan

Carol Stewart

Hilary Veale (Sternberg)

Alice Wakefield-Ward
(Wakefield)

Ann Wilks (Robson)

Margaret Winterbourne

Sarah Worster

1 Anonymous Donor

1963
Deirdre Brunning (Shotton)

Veronica Butler
(Freudenberg)

Anne Christopher
(Buckingham)

Mimi Danson (Price)

Tessa Dunstan (Fripp)

Joan Fuglesang (Pollard)

Jane Grove Annesley
(Holder)

Rachel Hayhow (Hawthorn)

Isabel Hitchman

Jill House (Turner)

Ann Hutchison

Alison Jones (Telfer)

Janet Lockwood (Mills)

Virginia Osborne
(Clutterbuck)

Jenny Pedley (Ashby)

Sheila Peskett

Susana Raby

Alison Soskice (Black)

Helena Wiesner

3 Anonymous Donors

1964

Anne Bell (Sawyer)

Ingrid Dodd (Eske)

Diana Dunford (Coley)

Paula Flynn (Field)

Ann Gentry (Gardiner)

Mary Griffiths (Fairbotham)

Beatrice Hammond
(Golding)

Rosemary Hudson (Turner)

Joanna Illingworth (Fincher)

Jo Labanyi (Wood)
Barbara Langley (Kellett)
Christina Mackwell
Anne Muers (Packwood)
Frances Payne (Harrison)

Caroline Rodger

Megs Rogers

Cathy Slater (Phillips)

Mary St Clayre (Greve)

Judy Stephenson (Clarke)

Josephine Townsend
(Miller)

Susan Tyson (Yarker)

Marina Warner

Wendy Warr (Dobson)

Christine Whittaker Navez
(Whittaker)

3 Anonymous Donors

1965
Philippa Addison (Manners)

Margaret Clark
(Phillips, Cocksey)

Joan Davies (De Sousa)

Susan Edwards
(Hannabuss)

Dorcas Fowler

Helen Griffiths (Middleton)

Susan Hockey (Petty)

Helen Issler

Eleanor Jack (Rees)

Nancy Johnson

Caroline Lancelyn Green
(Bennitt)

Teresa Love (Nash)

Jennifer Mann (Callan)

Anne Morris (Shaw)

Susan Nicholl (Lancashire)

Diana Schmidt (Jack)

Endellion Sharpe

Sue Sinclair (Stokes)

Cecilia Storr

Pam Thomas (Fairweather)

An-Margaret Walton
(Willis)

Susan Williams (York)

Alison Young (Thomson)

1 Anonymous Donor

1966

Marian Blaikley

Liz Carmichael (Becker)

Jenny Cook (Coombs)

Barbara Cox

Catherine Crowther

Jean Dollimore

Sarah Feather (Rees)

Deirdre Fordham

Carolyn Foreman
(Passmore)

Sue Gokgor

Fiona Gow

Amanda Holden (Warren)

Carole McKeown (Hoar)

Gillian Murdoch (Stubbs)

Barbara Packer (Jack)

Mari Prichard (Pritchard)

Mary Riggs (Howell)

Susannah Ross

Phyllis Starkey (Williams)

Elizabeth Stazicker (Hawke)

Jill Waters (Dingwall-Smith)

2 Anonymous Donors

1967

Susan Behrens (Butler)

Daphne Briggs (Nash)

Susan Buckee (O'Flaherty)

Frances Carey

Margaret Cawkwell
(Hetherington)

Anne Cullen
 Diana Edwards (Brown)
 Penny Freer
 Elizabeth Holt (Glass)
 Diana Kahn
 Baroness Manningham-Buller
 Janet Montefiore
 Sarah Page (Bramhall)
 Jane Parkin (Witherington)
 Griselda Pollock
 Helen Ramsdale
 Cherry Rowlings
 Mary Sarantis (Spice)
 Paula Sells (Muir)
 Katherine Sloper
 Janet Stevens (Keyte)
 Patricia White (George)
 Margaret Williams (Hillier)
1968
 Feroze Al-Qu'aiti (Rashid)
 Cerys Atkins (White)
 Anne Deighton
 Jenny Fiskin (Street)
 Liz Gibson (Sarson)
 Susan Goodman (Leviton)
 Paula Griffiths
 Philippa Herbert (Hooper King)
 Linda Hockey (Tarry)
 Penelope Jepson
 Margot Metcalfe (Bellamy)
 Katharine Nairne
 Vivienne Pozo (Allen)
 Anne Roberts (Conybeare)
 Elizabeth Rothwell (Johnson)
 Helen Rowett (Fechan)
 Annabel Saunders (Webber)
 Christine Shaw
 Gladys Skinner (Corrie)
 Dame Elizabeth Stern (Slade)
 Sarah Stewart-Brown
 Katrine Whitaker (Dalitz)
 3 Anonymous Donors
1969
 Lady Arthur (Plaxy Corke)
 Faith Boardman (Mills)
 Patricia Brims (Henderson)
 Sue Budgen
 Christine Coleman (Abel)
 Jane Cooper (Merriott)
 Vicky Davis (Whipp)
 Elaine Drage (Collier)
 Georgina Drummond (Lloyd)
 Isabel Goulding (Fisher)
 Deborah Grice (Wicks)
 Vicki Hamilton (Nelson)
 Avril Hanson (Rashleigh)
 Frances Harrison
 Priscilla Hother (Clark)
 Caroline Jackson-Houlston
 Dame Frances Lannon
 Ingrid Lawrie (Gilbert)
 Miren Letemendia
 Pauline Lewis
 Alison Marr
 Linda Montgomery (Merrall)
 Alison Moore (Sale)*
 Sandra Nicholson (Burman)
 Eleanor Nowers (Thwaites)
 Maggy Pigott (Toohey)
 Claire Robinson (France)
 Anne Shearer (Williams)
 Diana Snape (Grace)
 Sue Taylor
 Caroline Tucker (Macready)
 Adriana Turpin (Morison)
 Anna Walker (Butterworth)
 Rosalind Wheare (Spice)
 Ann Widdecombe
 Patricia Wilks (Hackforth)
 Mary Woolner (Holland)
 Mary Young (Sellers)
 4 Anonymous Donors

1970s
1970
 Margaret Budy
 Fiona Chesterton (Anderson)
 Liz Coleman (Baker)
 Kate Cooke (Collins)
 Monica Darley
 Jane Douglas
 Elise Elderkin
 Rachel Feilden
 Marna Gowan (Williams)
 Rose Guinness (Guinness)
 Gillian Harvey (Harding)
 Margaret Hebblethwaite (Speaight)
 Alison Jennings (Crawley)
 Rita Kleppmann (Evans)
 Joanna Leech (Kitchin)
 Pamela Lighthill
 Ruth Mastenbroek (Walters)
 Elizabeth Mills
 Susan Molyneux Warner (Cuthbert)
 Joanna Motion (Powell)
 Jane Murphy
 Deborah Sharp
 Judith Simpson
 Mary Smith (Streatfeild)
 Elisabeth Thom (Mardall)
 Ruth Turnbull (Jenkins)
 Judith Wale (Lough)
 1 Anonymous Donor
1971
 Caroline Butler (Butler Barnes)
 Helen Cockroft (Mudge)
 Catherine Cowan (Garnett)
 Frances Cui (Healey)
 Juliet Davies (Hirst)
 Penny Duckham
 Marjorie Fox
 Gillian Francis (Higgins)
 Sarah Graham (Fraenkel)
 Caroline Harvie (Gray)
 Ann Huntington (Spittlehouse)
 Meena Jefferys (Savla)
 Joan Link (Wilmot)
 Dame Judith Macgregor (Brown)
 Alison Moore (Foote)
 Heather Norman Soderlind (Soderlind)
 Patricia Pearl (Smallwood)
 Clare Rosenheim
 Sue Scott (Dean)
 Jacqueline Smith
 Mary Stafford (Swatman)
 Harriet Thistlethwaite
1972
 Alexandra Banay (Sharpe)
 Sarah Baxter (Stowell)
 Nicky Bull (Harper)
 Matilda Cockbain (Ellis)
 Pamela Coxson
 Susan Daish (Knight)
 Nali Dinshaw
 Margaret Fergusson (Wookey)
 Monica Fisher (Pring-Mill)
 Sara Impey (Bonner)
 Priscilla Ivory (Clews)
 Melinda Lewis (Cradock-Hartopp)
 Lady Mowbray (Penelope Brunet)
 Sandra O'Dell (Barlow)
 Martina Peattie (Cooper)
 Wendy Proctor
 Carol Record (Steven)
 Petra Schlupp (Coffield)
 Chloe Stone (Grundy)
 Margaret Wainwright (Smith)
 Sue White (Morton)
 Veronica Zundel
1973
 Lucy Barker
 Alice Bates (Thurau)

Ruth Bourne (Dobson)
 Ginny Catmur (Relton)
 Shaan Everson (Akester)
 Georgina Ferry
 Susie Furnivall (Hamblen)
 Bella Hildyard (Rennie)
 Katherine Holden (Mathias)
 Emma Johnson-Gilbert (Woodhouse)
 Tessa Kerwood
 Penny MacLeod (Bingham)
 Chrissy Merton
 Jane Northcote
 Jo Poulton
 Anne Willcocks
 Claire Wilmer
 1 Anonymous Donor
1974
 Jane Aldridge (Bennett)
 Carina Allsup (McMullan)
 Jo Andrews
 Hilary Ash (Gray)
 Michelle Banks (Roche)
 Rachel Craig (Salisbury)
 Stephanie Davies (Mills)
 Pia Eekelaar (Lewis)
 Alison Gomm
 Judy Hague
 Dorian Hames
 Alison Hardingham (Douglas)
 Melanie Hawthorne
 Josephine Hayes
 Sophy Holland
 Ruth Honey (Jefferson)
 Alison Johns
 Mandy King (Zinkin)
 Diana Martin
 Harriet Mitchison
 Victoria Schofield
 Rosemary Sharpe
 Rona Slator
 Maria Stone (Lai)
 Hazel Taylor
 Frances Thomas (Brown)
 Sarah Wilson
 Sarah Wookey
 4 Anonymous Donors
1975
 Victoria Burch (Marmion)
 Valerie Chamberlain
 Sheila Cook (Lenon)
 Yvonne Cook
 Wendy Dew-Jones (Hill)
 Vicky Dyer (Duckham)
 Deborah Forman (Mantorpe)
 Caroline Hogarth (Powell)
 Paula Hughes (Hickinbottom)
 Linden Lawson
 Diana Lazenby (Howell)
 Hilary Phelps
 Caroline Sykes (Miller)
 4 Anonymous Donors
1976
 Tricia Austin
 Sarah Brown
 Margaret Chambers
 Kathleen Coleman
 Nicky Devlin
 Baroness D'Souza (Frances Russell)
 Gail Featherstone (Salisbury)
 Kate Hamblen (Hayden)
 Ann Heavens (Cook)
 Angela Jameson
 Nancy Lubin
 Caroline Lumb (Tiddy)
 Sheila Markham
 Pauline Millican (Terry)
 Pip Oldham
 Philippa Owen (Reid)
 Kathy Smith (Bone)
 Liz Tanner
 Alison Vigers (Ball)
 Andrea Wills (Savidge)
 Rosemary Zolynski
 1 Anonymous Donor

1977
 Caroline Barnes (Twells)
 Lucy Bourne (Pollock)
 Carolyn Carr (Jones)
 Hilary Curtis (Mudge)
 Jane Dawson (Treppe)
 Caroline Daybell
 Gillian Fowler (Chester)
 Anne Fry (MacInnes)
 Carole Gannon
 Judith Garner
 Harriet Goldenberg
 Joanna Hale (Blundell)
 Ann Handford (Wilson)
 Pat Hawkins
 Lise Hopwood (Halliwell)
 Isabel Hudson (Draper)
 Judith Ingham
 Alison Kenney
 Marion Kerr
 Christine Mitchell (Saxton)
 Barbara Moore
 Susan Roast
 Elizabeth Salter (Paynting)
 Carol Sinclair (Eaton)
 Sally Spensley (Jacobs)
 Christine Van Hasselt (Prowse)
 Loraine Watson
 Susan Wood (Winfield)
 3 Anonymous Donors
1978
 Morag Ballance
 Cathleen Blackburn (O'Mahony)
 Domenica Dunne (Fraser)
 Elizabeth Fairhead (Duckworth)
 Penny Ferguson (Hewitt-Jones)
 Lucy Heller
 Esther Howard
 Margaret McKenzie (Cooper)
 Jennifer O'Connor
 Tessa van der Willigen
 Janet Wilkins
1979
 Peter Bartlett-Ruiz (Bartlett)
 Susan Beardmore (Richards)
 Caroline Boyle (Tuckett)
 Cindy Bull (Harrison)
 John Colvin
 Helen de Bray-Maguire (De Bray)
 Karen Down (Bettesworth)
 Ewan French
 Sonya Gale (Taylor)
 Kristin Gould (Jones)
 Mark Hanley-Browne
 Stephen Hester
 Karen Hicklin (Ellison)
 Mark Hobbs
 Sue Joshua
 Peter Kelly
 Harriet Kemp
 Sarah King
 Catherine Merry (Atkinson)
 Paula Moon (Rowland)
 Martin Pope
 Frances Stead Sellars
 David Sewell
 Geoff Skingsley
 Amanda Taylor (Smith)
 Graham Thick
 Andrea Wood (Knox)
 2 Anonymous Donors
1980s
1980
 Kathryn Barron (Fletcher)
 Roderick Barron
 John Beardmore
 Liz Berrisford (Rich)
 Tracy Brown (Brining)
 Nick Burge
 Donald Fothergill
 Adrian Fox
 Dhanesh Goberdhan

Bill Green
 James Halliwell
 Shaheed Haque
 Phil Harrison
 Rosemarie Hutchinson
 James Legg
 Philip Lewis
 Louise Lockock
 Raina Miles (Horrocks)
 Julian Nott
 Jacqueline Oates (Cook)
 Johnny Rogan
 Andrew Saul
 Helen Shabetai (Skerratt)
 Lysbeth Sleath (James)
 Clare Spacie (Sylvester)
 Lisa Stewart (Murphy)
 Judith Tew (Heald)
 Deborah Tompkinson
 Katrina Williams
 1 Anonymous Donor
1981
 Alison Beckingham (Woodcock)
 Andy Beckingham
 Paula Berry
 Andrew Bungard
 Iain Campbell
 Mark Clark
 Alicia Clegg
 Liz Conway
 Rose Duly (Smeed)
 Mark Gay
 Jim Howley
 Helen McCarthy (Fensome)
 Joan Musselbrook
 Derek O'Neill
 Shirley Park (Carter)
 Simon Phillips
 Sharon Ray (Holmes)
 Jenny Rowley (Cook)
 Almut Suerbaum
 Peter Tyler
 Jonathan Tymms
 David Westwood
 Andrew Wood
 1 Anonymous Donor
1982
 Anne Bowtell
 Helen Brebner (Franks)
 Richard Buxton
 Tracy Charley (Cook)
 Jill Dalton
 Vanessa Hammerton (Rumboll)
 Anne Homa (Wilkinson)
 Huat Soon Koh
 Caroline Learmonth (Pugh)
 Pamela Lentschner (Cleverly)
 Tamsin McGrath (Eedle)
 Pamela Nightingale
 John Styles
 Jill Troy (Bradshaw)
 Denise Varley
 1 Anonymous Donor
1983
 Guy Browning
 Stephanie Burns
 Andy Carr
 Rosemary Carr (Bond)
 Raymond Chan
 Nick Collier
 Rebecca Cunningham (Davies-Jones)
 Simon Dredzen
 Stephen Edwards
 Simon Evans
 Catherine Fooks (Taylor)
 Rosemary Graham
 Alison Hall (Wilson)
 Andrew Hayes
 Julia Hilton
 Caroline King (Daw)
 Anne-Marie Lawlor
 Mark Learmonth
 Carolyn Morgan
 Georgina Paton (Back)
 Michael Pether
 Doug Shaw

John Shipsey
 Clare Smith
 Naomi Starkey (Holmes)
 Sapna Subhani (Tolaney)
 Michael Thomas
 Joseph Titlebaum
 Deborah Wilson (Gray)
 Carolyn Yeoman (Payne)
 1 Anonymous Donor
1984
 Richard Cairns
 Catherine Crawford
 Nick Dixon
 Richard Fisher
 Jane Harland
 Kim Hatcher
 Andrew Hayes
 Catherine Holden
 Sarah Hudson (Naylor)
 Bruce Jenkyn-Jones
 Sam Kiley
 Catherine Lawes
 Miles Lawson
 Iain Morley
 James Orbell
 Jane Robertson
 Fiona Shipsey (Russell)
1985
 James Allen
 Katharine Burn
 Nicola Donlon
 Katharine Gordon (Hadfield)
 Ian Laming
 Nile Lanning
 Simone Ling
 Frances MacLean (Williams)
 Sally Nex (White)
 Paul Packham
 Polly Richards
 Maria Ross (Smith)
 Lorna Smith
 Renee Stone
 Sam West
 4 Anonymous Donors
1986
 Sara Bennison
 Denise Brown
 Forbes Elworthy
 John Graham-Cumming
 Julian Granville
 Daniel Gritz
 Adrian Higgins
 Iain Hildreth
 Bruce Jeffreson
 Ian Kirk
 Louisiana Lush
 Carol Percy
 Marek Pruszewicz
 Felicity Reeve
 John Roberts
 Seamus Tucker
 Tommy Wareing
 Tim Woollias
1987
 Simon Bentley
 Seren Boyd (Hall)
 Hong-I Chen
 Michael Coutts
 Lisa Craig
 Tim Ewington
 Baroness Finn
 (Simone Kubes)
 Adrian Hull
 Mark Kraiss
 Roland Martin
 Charlie Mawer
 Paul Mukherjee
 Suzanne Pattle (Oliver)
 Cherry Pritchard (Morris)
 David Proshan
 Paul Raven
 Andrew Reid
 Jonathan Rush
 Peter Siderman
 Martin Smith
 Julia Strauss
 Janet Unsworth (Alderdice)
 4 Anonymous Donors

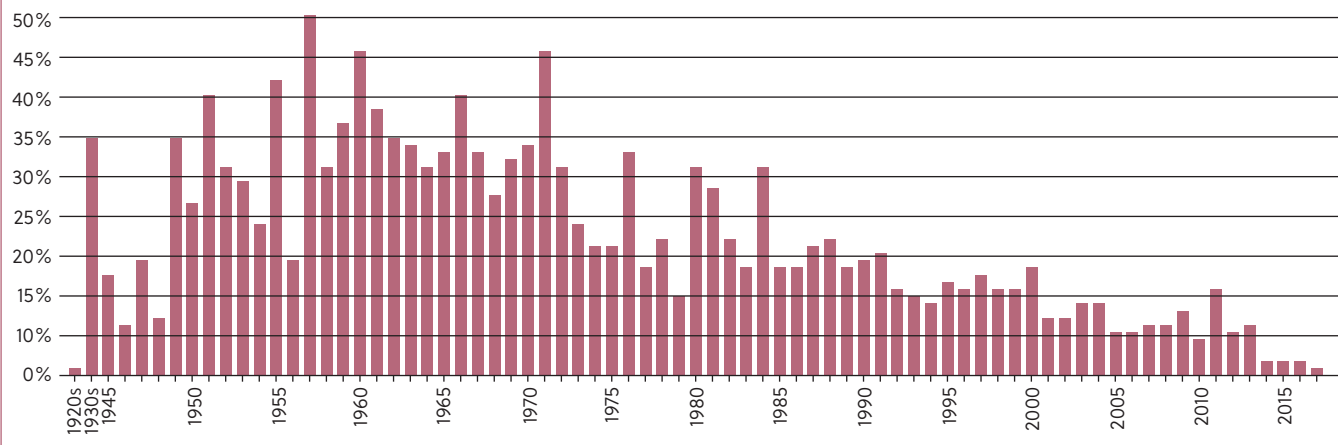
1988
 Jenny Barker (Mason)
 Martin Clarkson
 Susannah Cox-Johnson
 (Wilkins)
 Paul Foster
 Kate Grunstein
 Alex Hobson
 Melody Jones (Goddard)
 Barney Lane
 Leena Lane (Bramall)
 Ian Morrison
 Jennifer Oughourlian
 (Banks)
 Ian Pindar
 Corinne Saunders
 Temple Schauble (Perham)
 Jim Sparrow
 Peter Tang
 Paul Toon
 Sarah Turton (Drake)
 Claire Wardell
 Jeffrey Zulman
1989
 Kate Anderton
 Soondra Appavoo
 Jeannie Barber (Wood)
 Andrew Byford
 Amanda Chisholm (Lloyd)
 David Farwell
 Lisa Harris
 Alexis Huang
 David Mapstone
 Neil Marsden
 Catrin Meredith
 Ian Nash
 Claire Papps (Morris)
 Ziggy Pothoff
 Kirsteen Robson (Williams)
 Nick Simpson
 Natalie Smith (Adams)
 Vincent Smith
 Danielle Toutoungi
 Trevor Walker
 Ros Walton (Horner)
 1 Anonymous Donor
1990s
1990
 Nick Baikie
 Andrew Barber
 Colette Barclay
 Stephen Blease
 Emma Bloxham
 James Bridges
 Michael Casey
 Ben Davey
 James Dickinson
 Andrew Dunn
 Alison Edey (Baxter)
 Philip Edey
 Huw Evans
 Amanda Fraser
 Kirsty Hackshall (Searles)
 Claire Hayes
 Sally-Anne Huang
 (Blakemore)
 Paul Howarth
 Katie Kelly (Wilkins)
 Annette Li
 Richard Lofthouse
 John O'Connell
 Steven Osborn
 Rob Salem
 Dan Weighton
 Alice West (Hindle)
1991
 Claire Douglass
 Amanda Foreman
 Nina Goolamali
 Claire Gowers (Sykes)
 Emily Halton (Rea)
 John Halton
 Quentin Hay
 Garreth Hayes
 Karl Holmes
 Kathrin Luddecke
 Elizabeth McLeish
 Paul Severn
 Mike Shorthouse

Amy Simpson (Aldridge)
 Justine Spasojevic
 (Maitland)
 Mark Taylor
 Victoria Travis (Partington)
 Kathryn Whitney
1992
 Sara Barnard (Healey)
 Blaise Bradley
 Tim Day
 Charles Ehrlich
 Stephen Heidari-Robinson
 (Robinson)
 George Hooper
 Mark Langford
 James Lindsay
 Liz Lindsay (Cooke)
 Shaun McEvoy
 Cathy Newman
 Nick Parish
 Isabella Roberts
 Gabriel Sewell (Linehan)
 Clare Shoults
 Lucy Williams (Jones)
 1 Anonymous Donor
1993
 Adrian Cloake
 Michael Debenham
 Chris Eason
 Simon Folley
 Mark Haffenden
 Clare Heard (Poyser)
 Benjamin Holland
 Philip McCluney
 Cristina Neagu
 Daniel Raglan
 Jamie Salter
 Dean Underwood
 Magnus Walter
 2 Anonymous Donors
1994
 Jenny Allen (Admans)
 Gemma Allwood (Baggaley)
 Richard Allwood
 Amy Becker
 Debbie Cloake (Collins)
 Mark Collins
 Mark Dwyer
 Alex Jarvis
 Mike Jones
 Andrew Knowles
 Elen Lee Lewis
 John Locker
 Anne-Marie McBrien
 (Mitchinson)
 Zac Meadows
 Rebecca Tuck
 Nick Van Benschoten
 Esther Wallace (Mustchin)
 Tim Williams
 2 Anonymous Donors
1995
 Alice Carberry (Percival)
 Neil Carberry
 James Chard
 Sam Coulthard
 Ariane Crampton
 Michael George
 James Harvey
 Paddy Hayes
 Sarah Hayes
 Kossen Ho
 Neal Lomax
 Matthew McBrien
 Laura Muir
 James Scragg
 Grant Tapsell
 Alison Tysoe (Edge)
 Rebecca Warren (Martin)
 Alistair Weaver
 Catherine Williams (Elgar)
1996
 Poppy Adams (Teacher)
 Pauline Baer de Perignon
 (Baer)
 Zahaan Bharmal
 Emma Bong (Truett)
 Tracy Bownes (Gofton)
 Emma Huber (Leeson)
 Anthony Jones

Boon Kwan
 Virginia Mavrika
 Bartosz Moczydlowski
 Heather Mulahasani (Allsop)
 Eiriniokos Platis
 Sally Riggs
 Mathias Schaeli
 Edward Song
 Achim Spelten
 Peter Wainman
 Edward Wallace
 Emma Wilson
 Faris Yakob
 1 Anonymous Donor
1997
 Simon Andrews
 Rayhan Davis
 Peter Enskat
 Alison Hallas (Longworth)
 Ken Ho
 Ghassan Kansou (Kansov)
 Nick Lambert
 Robert Learney
 Stephen McGowan
 David Saunders
 Kate Scott (Landells)
 Bryan Shacklady
 Jo Shanmugalingam
 (Edwards)
 Alex Stacey (Robat)
 James Stacey
 Peter Thonemann
 Lucy Weber (Clissett)
 Mark Weber
 1 Anonymous Donor
1998
 Kiran Arora
 David Bakstein
 Jane Bass
 Jane Bliss
 Peter Churchill
 Rachael de los Reyes -
 Churchill (de los Reyes)
 Nick Fisher
 Sam Gilbert
 Felix Greaves
 Jessica Haley (Slater)
 Lucy Lewin (Warren)
 Kirsten Meier (Cooper)
 Michael Noone
 Alexandra Pike (Price)
 Christina Ransom (Edwards)
 Jim Sullivan
 Katherine Walker (Trippe)
 Sophie Walker
 Lisa Webster (Mason)
 1 Anonymous Donor
1999
 Jon Adams
 Sonali Chapman
 Keith Crothers
 George Degenhardt
 Kitty Dinshaw
 Priya Dutta
 Tom Edmonds
 Tara Firebrace
 Laura Gurney
 Kate Harden (Smith)
 Charlotte Henderson
 (Lindsten)
 Naomi Holdstock
 Simon Howarth
 Susanne Hughes
 Mark Lees
 Ben Nicholfield (Nicholson)
 Ryngan Pyper
 Chris Sandilands
 Clare Stansfield
 Evelien Visser
 Toby Wagstaff
 Sarah Whiteside
 James Wilton
 Harriet Worth
 Roy Wouters
2000s
2000
 Johan Bergstrom-Allen
 Lucio D'Amario
 Robert Davies

Rose Hasler
 Alex Hickman
 Doug Johnston
 Madelaine Kelly (Burnham)
 Tom Kelly
 David Locke
 Ed Mitchinson
 Thomas Riley
 Sam Simonds-Gooding
 Nicki Sprinz
2001
 Trevor Ashley
 Shelly Beard
 Ruth Bowen
 Sarah Boyd
 Rachel Haverson
 Mark Lewis
 Olga Markoulides
 (Papadopoulos)
 Joseph Nwokobia
 Marcel Priebisch
 Christopher Pulman
 Diana Román Shaw (Román)
 Helen Turner
 Peter Wilson
 1 Anonymous Donor
2002
 Richard Baderin
 Harriet Ball
 Catherine Beckett
 (McMillan)
 Bethy Grossman
 Michael Holmes
 Bryan Koo
 Lyndsey Laverack (McAuley)
 Tom Macdonald
 Dan Mallory
 David Matthews
 Shaun Melvin
 Christine O'Connor
 Emma Phillips
 Jessie Qiu
 Richard Todd
 Craig Walsh
 Jonathan White
2003
 Emos Ansa
 Nick Ashcroft
 Ruthi Brandt
 Steve Briddon
 Keelan Carr
 Peter Clements
 Rachel Fiske
 Neil Gatland
 Elyn Hannah (Pugh)
 Ravi Lakhani
 Qianhan Lin
 Victoria Lonsdale
 Abhishek Majumdar
 Conor Moore
 James Norris
 Andrea Osborne-Smith
 Chloe Rogers
 Tom Spinks
 Annette Stiggelbout
 Anthony Tricot
 Ying Zhu
 1 Anonymous Donor
2004
 Vicky Anderson
 David Bruce
 Michael Hirst
 Justin Ho
 Beth Hughes (Murtagh)
 John McClean
 Rebecca Mitchell
 Robbie Parkin
 Phil Patterson
 Michael Slavinsky
 Oliver Wickens
 1 Anonymous Donor
2005
 Sourav Choudhury
 Ernesto Feliz
 Merlin Fulcher
 Geoffrey Gomery
 Becky Kirsten (Shinner)
 Rachel Lockwood
 Jeremy Millard
 Shaun Passey

Participation by Year of Matriculation



Arnaud Payement
Ames Smith
John Wells
2006
Deborah Arianayagam
Emily Burrows (Wright)
Joe Burrows
William Chipperfield
Jolene Chow
David Glassman
Paul Hardwick
Abigail Leadbeater
James Mountain
Rodina Peachey
Marcin Sawicki
Andrew Spurr
Catherine Vickers
2007
Johann Alberts
Carly Blake
Kate Bowden
Oliver Cohen
Emma Dickson
Michael Grogan
Mark Hornsey
Oliver Nicoll
Freddie Page
Joe Santoso
Beth Steiner
Matt Woodbury
Weiwei Xu
Nasim Zargar Baboldashti

2008
Umberto Alessandria
Leigh Biddlecome
Paddy Boyle
Karen Clarke-Taylor (Clarke)
Paul Clarke-Taylor
Liz Collison
Caroline Davies
Sarah Dawson
Alice Kelway-Bamber
Nina Kumari
Laura McDonald
Conan McKenzie
Eve O'Brien
Sanna Parrika
Jonathan Pearson
Douglas Riddle
Max Schlote
John Williams
Irwin Zaid
2009
Raam Chauhan
Sarah Dawkins
James Dow
Richard Hinton
Joshua Hobson
Sophie McBrien
Sarah Price
Philip Schroeder
Hugo Tillman

2010s
2010
Alexandra Abelidis
Tauseef Ahmed
Laura Aitken-Burt
Rosalind Axbey
Alexander Barber
Jessica Beeson
Natasha Crook
Matt Durey
Amanda Gilbert
Bede Hoole
Natalie Hudson
Emily Johnson (Hinks)
Rosa Kei
Liza Leung
Helen Luckhurst
Kate Millar
Benjamin Payne
Mark Shepherd
Suan Sheridan Breakwell (Sheridan)
Amy Shim
Annabelle Trotter
Kathryn Twemlow
Clare Willis (Wilson)
Rachel York
1 Anonymous Donor
2011
Paul Bennett
Jonathan Chapman
Tim De Santa

Charlotte Farmer
Riley Floyd
Adrian Hernandez
Martha Masoero
Eva Miller
Rose Pashley
Cheri Supavatanakul
Jordan Thompson
William Wyeth
1 Anonymous Donor
2012
Qin Cao
Thee Chanyaswad
Tim Clark
Leandro Dos Santos Abade
Lewis Godfrey
Antoine Harel
Tracy Jennings
Daniel Jones
Sultana Ladhani
Victoria Rees
Tiffany Shum
Shivashkar Singh
Hannah Spens-Black
Zainab Usman
Robin Veale
2013
Helen Bewicke-Copley
Kit Dobyns
Laura Fenwick
Venetia Lindblom
Josie Lindsey-Clark

Kameel Premhid
Chris Robson
Sam Rowan
Luyang Tang
Ollie Watson
Max Wintle
2014
William Clements
Jack Djanogly
Elzbieta Young
2015
James Becker
Robert Dickens
Kitty Murdoch
Daniel O'Brien
2016
Molly Flaherty
Alex Gresty
Hanna Schnitzer
Huiting Xu
1 Anonymous Donor
2017
Pierre Banquy
Richie Heit
Amel Najjar

We would also like to thank the following donors:

Friends

Joel Aberbach
Caroline Anderson
John Ash
Andrew Barnard
Nicholas Bayne
Hannah Behrendt
Robert Bell
Frank Berman
David Blatherwick
Edmund Brose
Jim Buckee
Gus Carey
Richard Catmur
Tim Clement
Craig Comstock
Christopher Coombe
Robert Fielden
David Gowan
Patrick Grattan
Paul Green
Bernard Hadley
Paul Hale
Margaret Hutchinson
George Illingworth
David Law
Jean Lawes
Lindsay Mackie

Jan Machiels
Paul Malam
Veronika Markwardt
Chris Marlow
Jay Merchant
John Mills
Geoffrey Morris
Joseph Oughourlian
John Oughton
James Papps
Eleanor Scott
Robert Sells
Gail Sinai
Kirstie Smith
Geoffrey Stevens
Christopher Thompson
John Turing
William Tyson
Andrew Walton
John Walton
Wei Wei
Andrew Wright
1 Anonymous Donor
Staff
Charlotte Heavens
Sarah Jones
Jo Murray

Contributing Fellows

Alan Rusbridger, Principal
Aziz Aboobaker,
Tutor in Biology
Anna Abulafia,
Tutor in Theology
Christine Gerrard,
Tutor in English
Christina Kuhn, Tutor in
Ancient History
Tim Pottle, Development
Director (to March 2020)
Helen Scott, Tutor in Law
Grant Tapsell,
Tutor in History
Natalie Quinn,
Tutor in Economics
Emeritus Fellows
Clive Holmes
Gordon Lord
Elizabeth Mackenzie
Susan Reynolds
Richard Sommers
Peter Watson

Honorary Fellows

Juliet Campbell (Collings)
Anne Hudson
Mary Jacobus
Dame Frances Lannon
Fiona MacCarthy*
Dame Judith
Macgregor (Brown)
Baroness Manningham-
Buller
Jennifer Montagu
Dame Elizabeth
Stern (Slade)
Susan Treggiari (Franklin)
Marina Warner
Sam West

Honorary Research Fellows

James Carley
Anthony Davison
Jo Poulton
Cathy Slater (Phillips)

Foundation Fellow

Donald Fothergill
Visiting Fellow
Frances Stead Sellars

Trusts, Foundations, Companies and Other Groups

Alexander Moseley
Charitable Trust
Americans for Oxford Inc.
Ares Management
Bryan Guinness
Charitable Trust
Clare Duffield Foundation
Don Howarth and
Suzelle Smith Foundation
Fidelity Investments
Gordon and
Betty Moore Foundation
Hogan Lovells LLP - London
IKEA Foundation
Issachar Fund
LMH Three Peaks Challenge
Donors in memory of
Paul McClean 2010
McKinsey & Company Inc.
Oxford University
College Contributions
Schuabe Family Foundation
Tiger Baron Foundation

Beaufort Circle of Legators

We are deeply grateful to the 270 alumni and friends who have generously chosen this far-sighted way of providing support to future generations of students and academics at LMH. This is a wonderful gesture and we are delighted to recognise and thank publicly all those who have let us know of their intention to make a legacy to LMH, by enrolling them as members of the Beaufort Circle. During the last year, we have welcomed an additional 20 members.

It is a pleasure and privilege to invite all members to the annual Beaufort Circle lunch to keep them updated with current activity and development in the College. We look forward to sharing the date of our next event as soon as we are able to.

Cynthia Phillips (Broster) 1937	Sylvia Limerick (Lush) 1955	Ann Hutchison 1963	Sheila Dunleavy (Squire) 1970	Alison Kenney 1977
Cathy Avent 1939	Susan Rose (Latham) 1955	Jane O'Rorke (Harding) 1963	Joanna Motion (Powell) 1970	Hunada Nous 1977
Mary Parsons 1940	Christine Sutherland (Mason) 1955	Alison Soskice (Black) 1963	Jane Murphy 1970	Susan Roast 1977
Elizabeth Mackenzie 1941	Gillian Symons (Horley) 1955	Baroness Hogg (Sarah Boyd-Carpenter) 1964	Gillian Peele 1970	Loraine Watson 1977
Rita Ruhl 1941	Yoma Ullman (Crosfield) 1955	Barbara Howden Richards (Shaw) 1964	Deborah Sharp 1970	Maria Bentley (Cavanagh) 1978
Janet Butcher 1942	Delyn Watt (Ingram) 1955	Anna McNair Scott (Colquhoun) 1964	Judith Simpson 1970	Cathleen Blackburn (O'Mahony) 1978
Irene Hindmarsh 1942	Celia Charrington (Jaques) 1956	Sue Phillips (Beal) 1964	Ruth Turnbull (Jenkins) 1970	Caroline Sturge (Brown) 1978
Joan Anderson (Truman) 1943	Anne Seakins (Fazackerley) 1956	Caroline Rodger 1964	Margaret Coombe (Mallaband) 1971	Peter Bartlett-Ruiz (Bartlett) 1979
Priscilla Bain (Blunt) 1943	Jean Stirling (Marsh) 1956	Susan Tyson (Yarker) 1964	Elizabeth Coons 1971	Mark Browne 1979
Renate Barany 1943	Brian Fall 1957	Wendy Warr (Dobson) 1964	Penny Duckham 1971	Stephen Hester 1979
Lady Oppenheimer (Helen Lucas-Tooth) 1944	Molly Fromm (Baylis) 1957	Hilary Warr 1964	Joy Hendry 1971	Valerie Mitchell 1971
Elspeth Wolstencroft 1945	Prue Fuller (Martin) 1957	Christine Whittaker Navez (Whittaker) 1964	Heather Mitchell 1971	Heather Soderlind (Soderlind) 1971
Cathleen Sweet (Vause) 1946	Joanna Hitchcock (Goodman) 1957	Margaret Willes 1964	Sara Walker 1971	Susan Walker 1971
Lady Tovey (Gwen Herbert) 1946	Meg Rothwell 1957	Kathy Ferguson (Jepson) 1965	Susannah Weaver (Steed) 1971	Nicky Bull (Harper) 1972
Brigid Wells (Haydon) 1946	Sally Sampson (Bentlif) 1957	Dorcas Fowler 1965	Matilda Cockbain (Ellis) 1972	Arminel Fennelly (Sebesta) 1972
Jean Thomson 1947	Sheila Cameron 1958	Helen Griffiths (Middleton) 1965	Monica Fisher (Pring-Mill) 1972	Heather Johnston 1972
Anne Wyburd (Ross) 1947	Deborah Lavin 1958	Cicely Howell 1965	Rosalind Marsh (Wells) 1972	Sue White (Morton) 1972
Audrey Colson (Butt) 1948	Janet Momsen (Henshall) 1958	Penny Campbell-Adamson (Maitland Culverwell) 1966	Lynette Edwards 1973	Susie Furnivall (Hamblen) 1973
Jennifer Butterworth (Brown) 1949	Pauline Jones 1958	Sharon Churcher 1966	Susie Furnivall (Hamblen) 1973	Linda Muirhead (Johnson) 1973
Ena Fowler (Bradley) 1949	Joan Rudd (Bower) 1958	Charlotte Clarke (Jenkins) 1966	Gianetta Rands 1973	Janet Smart (Efstathiou) 1973
Joan Hasler 1949	Anne Simor (Crowe) 1958	Jenny Cook (Coombs) 1966	Bernice Allman (Paton) 1974	Bernice Allman (Paton) 1974
Sheila Innes 1949	Susan Treggiari (Franklin) 1958	Lavinia Cunningham (Kinchin-Smith) 1966	Alison Gomm 1974	Alison Gomm 1974
Irina Kirillova (Kirilloff) 1949	Catherine Smith (Smith) 1959	Jane Parkin (Witherington) 1967	Alison Schroeder (Page) 1974	Alison Schroeder (Page) 1974
Jean McElheran (Durham) 1949	Gay Gervin 1959	Deirdre Fordham 1966	Valerie Chamberlain 1975	Valerie Chamberlain 1975
Janet Smale (Harwood) 1949	Mary Haynes (Lambert) 1959	Sue Gokgor 1966	Suzanne Farr 1975	Suzanne Farr 1975
Janice Taverne (Hennessey) 1949	Catherine Jarman (Warburton) 1959	Daphne Hampson 1966	Suzanne Franks 1975	Suzanne Franks 1975
Clare Goulder (Gardner) 1950	Liz Rogers 1959	Carole McKeown (Hoar) 1966	Susan Morris 1975	Susan Morris 1975
Marigold Johnson (Hunt) 1950	Joella Werlin 1959	Elaine Richards 1966	Suzelle Smith (Moss) 1975	Suzelle Smith (Moss) 1975
Valerie Barnish (Beeching) 1951	Elizabeth Clarke (Ivimy) 1960	Elizabeth Dwiar 1967	Jane Anderson (Lambert) 1976	Jane Anderson (Lambert) 1976
Anne Kaye (Holland) 1951	Virge James (Taul) 1960	Jane Parkin (Witherington) 1967	Kirsteen Donaldson 1976	Kirsteen Donaldson 1976
Jane Reid (Harwood) 1951	Nancy Perham 1960	Diana Stow 1967	Frances D'Souza (Russell) 1976	Frances D'Souza (Russell) 1976
Janet de Gaynesford (Christopher) 1952	Maggie Pringle 1960	Liz Gibson (Sarson) 1968	Angela Jameson 1976	Angela Jameson 1976
Antonia Southern (McAndrew) 1952	Vicky Bocock (Tusa) 1961	Anne Roberts (Conybeare) 1968	Caroline Lumb (Tiddy) 1976	Caroline Lumb (Tiddy) 1976
Diana Atkinson (Laycock) 1953	Joanna Breyer (Hare) 1961	Christine Shaw 1968	Nicky Manby (Croome) 1976	Nicky Manby (Croome) 1976
Sonia Haslett (Macfarlane) 1953	Gill Perrin (Hughes-Thomas) 1961	Dame Elizabeth Stern (Slade) 1968	Sheila Markham 1976	Sheila Markham 1976
Gill Wilson (Rolls) 1953	Piffa Schroder (Holt) 1961	Christine Coleman (Abel) 1969	Carolyn Carr (Jones) 1977	Carolyn Carr (Jones) 1977
Eve Barsham 1954	Diana Guy (Eade) 1962	Frances Lannon 1969	Jill Cook (Goodrum) 1977	Jill Cook (Goodrum) 1977
Monnica Hussey 1954	Everild Haynes (Williams) 1962	Ingrid Lawrie (Gilbert) 1969	Mary Corran (Waterhouse) 1977	Mary Corran (Waterhouse) 1977
Margaret Knight 1954	Jacqueline Khan (Rutherford) 1962	Sandra Nicholson (Burman) 1969	Anne Fry (MacInnes) 1977	Anne Fry (MacInnes) 1977
Cleodie Mackinnon (Macdonald) 1954	Carolyn King (West) 1962	Anna Pope 1969	Jennifer Hayward 1977	Jennifer Hayward 1977
Susan Monaghan (Pyke) 1954	Ann Marcus (Edwards) 1962	Sue Taylor 1969	Judith Ingham 1977	Judith Ingham 1977
Elizabeth Krishna (Kirwan) 1955	Penny Neary (Warren) 1962	Fiona Chesterton (Anderson) 1970		
	Hilary Potts (Fish) 1962	Mary Dejevsky (Peake) 1970		
	Elizabeth Allen 1963	Jane Douglas 1970		
	Delia Burley (Clark) 1963			
	Catherine Chambers (Simmonds) 1963			

Legacies Received

The following legacies were gratefully received by the College between 1st August 2019 and 31st July 2020:

Barbara Beaumont (Stanton) 1948	Margery Ord
Jonquil Bevan 1960	Isobel Parke 1944
Diana Bremner (Sanderson) 1943	Jill Pearce (Mackeown) 1955
Jane Havell 1972	Peter Smith (St Edmund Hall) 1950
Margaret Kalfayan (Walker) 1947	for Valerie Smith (Hancock) 1949
Josephine Karavasili (Knight) 1968	Helen Warnock (Wilson) 1942
Brenda Loy (Walker) 1947	

Royalties from the Estates of

Mary O'Brien 1949

Dame Lucy Sutherland

Please consider joining the 270 Alumni and Friends, aged between 30 and 101, who have pledged a legacy to the College in their will. Legacies are a marvellous way to support the students and academics of LMH into the future.

To inform LMH of your intention, to discuss your thoughts about a proposed gift, or to request more information, please contact Carrie Scott, Deputy Development Director: carrie.scott@lmh.ox.ac.uk

Gifts in Memoriam

Bunty Sherratt 1953, for Anne Barbara Gasser (Thompson) 1953
 Joella Werlin 1959, for Clarissa Rowland 1939
 John Walton, on behalf of Ann-Margaret Walton (Willis) 1965,
 for Elizabeth Willis (Ewing) 1937

Frances Carey 1967, plants for Gertrude Bell
 Rosemary Graham 1983, for Louise Rush 1981
 Catherine Lawes 1984, for Ronald Lawes, with Jean Lawes

Souvent Me Souviens Donors

*donors who have been giving to LMH for at least 10 years and have made a gift in the previous 18 months, from end July 2020.

Elizabeth McGavigan (Payne) 1937	Jill Hamilton (Brimblecombe) 1953	Lady Mountfield (Anne Newsham) 1958	Marion Michell (Cutler) 1962	Beth Rainey 1966
Cynthia Phillips (Broster) 1937	Sonia Haslett (Macfarlane) 1953	Jane Reilly 1958	Penny Neary (Warren) 1962	Mary Riggs (Howell) 1966
Torla Mackarness (Tidman) 1939	Margaret Jarvis (Gostelow) 1953	Joan Rudd (Bower) 1958	Carol Stewart 1962	Susannah Ross 1966
Elizabeth Mackenzie 1941	Mary Mason (Collie) 1953	Carolyn Schofield 1958	Rosemary Quillinan 1962	Jill Waters (Dingwall-Smith) 1966
Mary Holtby (Graham) 1943	Joan Rees 1953	Anne Simor (Crowe) 1958	Alice Wakefield-Ward (Wakefield) 1962	Susan Behrens (Butler) 1967
Audrey Hardwick (Marchington) 1944	Bridget Smith (Osborn) 1953	Susan Treggiari (Franklin) 1958	Veronica Warner (Smith) 1962	Margaret Cawkwell (Hetherington) 1967
Elaine Miles (Armstrong) 1944	Margaret Bonfiglioli (Slater) 1954	Virginia Allport (Watson) 1959	Margaret Winterbourne 1962	Anne Cullen 1967
Sonya Hilton (Gregory) 1945	Juliet Campbell (Collings) 1954	Hazel Archer Sanger (Archer) 1959	Caroline Arms (Elston) 1963	Diana Edwards (Brown) 1967
Rachel Graham (Norman) 1947	Jean Mayland (Goldstraw) 1954	Catherine Delano-Smith (Smith) 1959	Deirdre Brunning (Shotton) 1963	Penny Freer 1967
Eileen Jones (Greep) 1947	Susan Monaghan (Pyke) 1954	Gay Gervin 1959	Patricia Clarke 1963	Diana Kahn 1967
Susan Reynolds 1947	Jennifer North (Barratt) 1954	Mary Haynes (Lambert) 1959	Janet Davies (Eastwood) 1963	Baroness Manningham-Buller 1967
Sheila Voil (Danks) 1947	Ann Ferguson 1955	Deh-I Hsiung 1959	Tessa Dunstan (Fripp) 1963	Janet Montefiore 1967
Anne Wyburd (Ross) 1947	Greta Flitcroft (Seckerson) 1955	Elizabeth Kennedy (Curtiss) 1959	Jane Grove Annesley (Holder) 1963	Sarah Page (Bramhall) 1967
Jill Burgis (Cuthbert) 1948	Elizabeth Krishna (Kirwan) 1955	Maureen Klebanov (Norton) 1959	Isabel Hitchman 1963	Jane Parkin (Witherington) 1967
Jennifer Butterworth (Brown) 1949	Sylvia Countess of Limerick (Lush) 1955	Tina Lamb (Hunt) 1959	Ann Hutchison 1963	Helen Ramsdale 1967
Sali Dening (Rogers) 1949	Beryl Morton (Harper) 1955	Liz Rogers 1959	Anna Kingston (Latham) 1963	Paula Sells (Muir) 1967
Doris Drew (Broadfield) 1949	Mavis Page (Jacques) 1955	Jenny Stratford (Lewis) 1959	Janet Lockwood (Mills) 1963	Katherine Sloper 1967
Heather Goodare (Young) 1949	Irene Palmer (Pizzev) 1955	Phoebe Wainwright (Malcolm) 1959	Jenny Major (Pincott) 1963	Janet Stevens (Keyte) 1967
Sheila Innes 1949	Antonia Pulsford (Mellersh) 1955	Joella Werlin 1959	Sheila Peskett 1963	Margaret Williams (Hillier) 1967
Irina Kirillova (Kirilloff) 1949	Susan Rose (Latham) 1955	Diana Allan (Cotton) 1960	Alison Soskice (Black) 1963	Jenny Fiske (Street) 1968
Jennifer Montagu 1949	Margaret Sanders (Wild) 1955	Deborah Chorlton (Thompson) 1960	Helena Wiesner 1963	Liz Gibson (Sarson) 1968
Sylvia Schlesinger (Couzens) 1949	Lady Sorabji (Kate Taster) 1955	Christine Considine (Maney) 1960	Catherine Willis 1963	Paula Griffiths 1968
Janice Taverne (Hennessey) 1949	Christine Sutherland (Mason) 1955	Maureen Cruickshank (Ware) 1960	Ingrid Dodd (Eske) 1964	Linda Hockey (Tarry) 1968
Priscilla Tolfree 1949	Gillian Symons (Horley) 1955	Ruth Ellis (Kelham) 1960	Diana Dunford (Coley) 1964	Ann Kennedy 1968
Margaret Butt (Chaundy) 1950	Delyn Watt (Ingram) 1955	Carol Harris (Brown) 1960	Paula Flynn (Field) 1964	Vivienne Pozo (Allen) 1968
Alexine Crawford (Strover) 1950	Julie Whelan (Knight) 1955	Gill Healey (Williams) 1960	Ann Gentry (Gardiner) 1964	Anne Roberts (Conybeare) 1968
Clare Goulder (Gardner) 1950	Celia Charrington (Jaques) 1956	Celia Holm (Haigh) 1960	Mary Griffiths (Fairbotham) 1964	Elizabeth Rothwell (Johnson) 1968
Elizabeth Haughton (Lee) 1950	Emma Cross (Black) 1956	Virge James (Taul) 1960	Sarah Mills (Proby) 1964	Helen Rowett (Fechan) 1968
Diana Holman (Hartshorn) 1950	Louise Grattan (Jopling) 1956	Alison Meredith (Wightman) 1960	Frances Payne (Harrison) 1964	Dame Elizabeth Stern (Slade) 1968
Joy Holmes 1950	Anne Smith (Millington) 1956	Juliet Rogers (Curtis) 1960	Caroline Rodger 1964	Katrine Whitaker (Dalitz) 1968
Valerie Barnish (Beeching) 1951	Felicity Youard (Morton) 1956	Carola Small (Martin) 1960	Megs Rogers 1964	Faith Boardman (Mills) 1969
Barbara Case (Wilson) 1951	Lucy Archer (Erith) 1957	Jillinda Tiley (Draper) 1960	Christine Shuttleworth (Arrowsmith) 1964	Patricia Brims (Henderson) 1969
Sonia Fieldhouse (Browne) 1951	Kate Banister (Bird) 1957	Anne Andrews (Northover) 1961	Cathy Slater (Phillips) 1964	Sue Budgen 1969
Anne Kaye (Holland) 1951	Prue Fuller (Martin) 1957	Diana Bowder (Gilbert) 1961	Susan Tyson (Yarker) 1964	Jane Cooper (Merriott) 1969
Lady Reid (Jane Harwood) 1951	Luisa Gunning (Cross) 1957	Christine Darby (MacNair) 1961	Marina Warner 1964	Elaine Drage (Collier) 1969
Julia Woodward (Saffery) 1951	Sylvia Harris (Baggs) 1957	Mary Gladman 1961	Christine Whittaker Navez (Whittaker) 1964	Georgina Drummond (Lloyd) 1969
Patricia Adams (Parry) 1952	Anne Hudson 1957	Charlotte Johnson Wahl (Fawcett) 1961	Philippa Addison (Manners) 1965	Isobel Goulding (Fisher) 1969
Pamela Barnett 1952	Ruth Leslie 1957	Christine Darby (MacNair) 1961	Margaret Claisse (Spalding) 1965	Deborah Grice (Wicks) 1969
Judy Marshall (Sandison) 1952	Virginia Makins (Shapiro) 1957	Mary Gladman 1961	Joan Davies (De Sousa) 1965	Vicki Hamilton (Nelson) 1969
Elizabeth Pierce (Salman) 1952	Carol Mellor (Atkinson) 1957	Charlotte Johnson Wahl (Fawcett) 1961	Susan Edwards (Hannabuss) 1965	Priscilla Hother (Clark) 1969
Antonia Southern (McAndrew) 1952	Carola Mercer (Anderson) 1957	Ann Kentfield (Hewetson) 1961	Helen Griffiths (Middleton) 1965	Dame Frances Lannon 1969
Margaret Stewardson (Bryant) 1952	Christine Stone (Gregory) 1957	Deborah Land (Murdoch) 1961	Eleanor Jack (Rees) 1965	Ingrid Lawrie (Gilbert) 1969
Diana Atkinson (Laycock) 1953	Helen Crowe (Dale) 1958	Sarah Langton-Lockton 1961	Caroline Lancelyn Green (Bennitt) 1965	Pauline Lewis 1969
Joyce Douglas (Sherratt) 1953	Jenepher Hawkins (Neil) 1958	Janet Middleton (Troop) 1961	Jennifer Mann (Callan) 1965	Linda Montgomery (Merrall) 1969
	Lyn Kite (Baker) 1958	Elizabeth Newson (Shaw) 1961	Susan Williams (York) 1965	Sandra Nicholson (Burman) 1969
	Sarah Knight (Prideaux) 1958	Joanna Watson (King) 1961	Marian Williams (York) 1965	Eleanor Nowers (Thwaites) 1969
	Lisa Miller (Davies) 1958	Georgina Winkley (Smart) 1961	Catherine Crowther 1966	Maggy Pigott (Toohey) 1969
	Janet Momsen (Henshall) 1958	Jane Foster (Flower) 1962	Jean Dollimore 1966	Sue Taylor 1969
	Margaret Morrell 1958	Diana Guy (Eade) 1962	Carolyn Foreman (Passmore) 1966	Anna Walker (Butterworth) 1969
		Everild Haynes (Williams) 1962	Fiona Gow 1966	Rosalind Wheare (Spice) 1969
		Mary Jacobus 1962	Carole McKeown (Hoar) 1966	Ann Widdecombe 1969
		Carolyn King (West) 1962	Gillian Murdoch (Stubbs) 1966	Patricia Wilks (Hackforth) 1969
		Ann Marcus (Edwards) 1962	Barbara Packer (Jack) 1966	

Valerie Chapman (Boyce) 1970
 Fiona Chesterton (Anderson) 1970
 Kate Cooke (Collins) 1970
 Monica Darley 1970
 Jane Douglas 1970
 Rachel Feilden 1970
 Rita Kleppmann (Evans) 1970
 Joanna Leech (Kitchin) 1970
 Ruth Mastenbroek (Walters) 1970
 Elizabeth Mills 1970
 Jane Murphy 1970
 Judith Simpson 1970
 Mary Smith (Streatfeild) 1970
 Elisabeth Thom (Mardall) 1970
 Ruth Turnbull (Jenkins) 1970
 Judith Wale (Lough) 1970
 Helen Cockroft (Mudge) 1971
 Margaret Coombe (Mallaband) 1971
 Catherine Cowan (Garnett) 1971
 Penny Duckham 1971
 Carla Findlay (Marchetti) 1971
 Caroline Harvie (Gray) 1971
 Joan Link (Wilmot) 1971
 Dame Judith Macgregor (Brown) 1971
 Heather Norman Soderlind (Soderlind) 1971
 Patricia Pearl (Smallwood) 1971
 Sue Scott (Dean) 1971
 Jacqueline Smith 1971
 Mary Stafford (Swatman) 1971
 Harriet Thistlethwaite 1971
 Alexandra Banay (Sharpe) 1972
 Sarah Baxter (Stowell) 1972
 Nicky Bull (Harper) 1972
 Matilda Cockbain (Ellis) 1972
 Nali Dinshaw 1972
 Sandra O'Dell (Barlow) 1972
 Petra Schlupp (Coffield) 1972
 Chloe Stone (Grundy) 1972
 Margaret Wainwright (Smith) 1972
 Veronica Zundel 1972
 Chrissie Clement (Cornelius) 1973
 Lynette Edwards 1973
 Shaan Everson (Akester) 1973
 Georgina Ferry 1973
 Susie Furnivall (Hamblen) 1973
 Emma Johnson-Gilbert (Woodhouse) 1973
 Janet Smart (Efstathiou) 1973
 Claire Wilmer 1973
 Jane Aldridge (Bennett) 1974
 Bernice Allman (Paton) 1974
 Jo Andrews 1974
 Michelle Banks (Roche) 1974
 Rachel Craig (Salisbury) 1974
 Stephanie Davies (Mills) 1974
 Pia Eekelaar (Lewis) 1974
 Dorian Hames 1974
 Alison Hardingham (Douglas) 1974
 Josephine Hayes 1974
 Diana Martin 1974
 Harriet Mitchison 1974
 Rosemary Sharpe 1974
 Rona Slator 1974
 Hazel Taylor 1974
 Frances Thomas (Brown) 1974
 Sarah Wilson 1974
 Sarah Wookey 1974
 Valerie Chamberlain 1975
 Deborah Forman (Manthorpe) 1975
 Linden Lawson 1975

Jane Wyman (Ryan) 1975
 Kathleen Coleman 1976
 Nicky Devlin 1976
 Kate Hamblen (Hayden) 1976
 Ann Heavens (Cook) 1976
 Angela Jameson 1976
 Sheila Markham 1976
 Philippa Owen (Reid) 1976
 Mark Robson 1976
 Kathy Smith (Bone) 1976
 Liz Tanner 1976
 Rosemary Zolynski 1976
 Caroline Barnes (Twells) 1977
 Lucy Bourne (Pollock) 1977
 Carolyn Carr (Jones) 1977
 Hilary Curtis (Mudge) 1977
 Anne Fry (MacInnes) 1977
 Carole Gannon 1977
 Ann Handford (Wilson) 1977
 Pat Hawkins 1977
 Isabel Hudson (Draper) 1977
 Marion Kerr 1977
 Jane Kilpatrick 1977
 Sarah King (Hopkins) 1977
 Christine Mitchell (Saxton) 1977
 Barbara Moore 1977
 Sally Spensley (Jacobs) 1977
 Loraine Watson 1977
 Susan Wood (Winfield) 1977
 Morag Ballance 1978
 Cathleen Blackburn (O'Mahony) 1978
 Domenica Dunne (Fraser) 1978
 Elizabeth Fairhead (Duckworth) 1978
 Susan Beardmore (Richards) 1979
 Caroline Boyle (Tuckett) 1979
 Cindy Bull (Harrison) 1979
 Karen Down (Bettesworth) 1979
 Ewan French 1979
 Sonya Gale (Taylor) 1979
 Kristin Gould (Jones) 1979
 Mark Hanley-Browne 1979
 Stephen Hester 1979
 Judith Hibbs (McGown) 1979
 Sue Joshua 1979
 Peter Kelly 1979
 Harriet Kemp 1979
 Catherine Merry (Atkinson) 1979
 Frances Sellers (Stead) 1979
 David Sewell 1979
 Graham Thick 1979
 Andrea Wood (Knox) 1979
 Kathryn Barron (Fletcher) 1980
 Roderick Barron 1980
 John Beardmore 1980
 Liz Berrisford (Rich) 1980
 Nick Burge 1980
 Adrian Fox 1980
 Bill Green 1980
 Shaheed Haque 1980
 Phil Harrison 1980
 Rosemarie Hutchinson 1980
 James Legg 1980
 Philip Lewis 1980
 Louise Lcock 1980
 Julian Nott 1980
 Jacqueline Oates (Cook) 1980
 Andrew Saul 1980
 Lysbeth Sleath (James) 1980
 Clare Spacie (Sylvester) 1980
 Lisa Stewart (Murphy) 1980
 Judith Tew (Heald) 1980
 Alison Beckingham (Woodcock) 1981
 Andy Beckingham 1981
 Paula Berry 1981
 Andrew Bungard 1981
 Iain Campbell 1981
 Alicia Clegg 1981

Liz Conway 1981
 Mark Gay 1981
 Jim Howley 1981
 Joan Musselbrook 1981
 Shirley Park (Carter) 1981
 Sharon Ray (Holmes) 1981
 Jenny Rowley (Cook) 1981
 Peter Tyler 1981
 David Westwood 1981
 Andrew Wood 1981
 Helen Brebner (Franks) 1982
 Richard Buxton 1982
 Tracy Charley (Cook) 1982
 Jill Dalton 1982
 Anne Homa (Wilkinson) 1982
 Pamela Lentschner (Cleverly) 1982
 Pamela Nightingale 1982
 Gabriel Sewell 1982
 Andy Carr 1983
 Rosemary Carr (Bond) 1983
 Nick Collier 1983
 Rebecca Cunningham (Davies-Jones) 1983
 Simon Dredzen 1983
 Stephen Edwards 1983
 Simon Evans 1983
 Catherine Fooks (Taylor) 1983
 Alison Hall (Wilson) 1983
 Julia Hilton 1983
 Caroline King (Daw) 1983
 Anne-Marie Lawlor 1983
 Michael Pether 1983
 Doug Shaw 1983
 John Shipsey 1983
 Sapna Subhani (Tolane) 1983
 Michael Thomas 1983
 Deborah Wilson (Gray) 1983
 Carol Bryant (Greenfield) 1984
 Sue Burgess (Rimmer) 1984
 Richard Cairns 1984
 Catherine Crawford 1984
 Nick Dixon 1984
 Richard Fisher 1984
 Andrew Hayes 1984
 Sarah Hudson (Naylor) 1984
 Sam Kiley 1984
 Iain Morley 1984
 James Orbell 1984
 Fiona Shipsey 1984
 Katharine Burn 1985
 Katharine Gordon (Hadfield) 1985
 Nile Lanning 1985
 Simone Ling 1985
 Nick North 1985
 Paul Packham 1985
 Polly Richards 1985
 Sam West 1985
 Sara Bennison 1986
 Denise Brown 1986
 John Graham-Cumming 1986
 Julian Granville 1986
 Adrian Higgins 1986
 Bruce Jeffreson 1986
 Ian Kirk 1986
 Louisiana Lush 1986
 Marek Pruszewicz 1986
 Seamus Tucker 1986
 Tommy Wareing 1986
 David Clark 1987
 Michael Coutts 1987
 Rachel Davies 1987
 Tim Ewington 1987
 Kathleen Finn 1987
 Baroness Finn (Simone Kubes) 1987
 Adrian Hull 1987
 Roland Martin 1987
 Charlie Mawer 1987
 Cherry Pritchard (Morris) 1987
 David Proshan 1987
 Andrew Reid 1987

Jonathan Rush 1987
 Peter Siderman 1987
 Martin Smith 1987
 Julia Strauss 1987
 Janet Unsworth (Alderdice) 1987
 Helen Walker 1987
 Jenny Barker (Mason) 1988
 Susannah Cox-Johnson (Wilkins) 1988
 Ian Morrison 1988
 Ian Pindar 1988
 Corinne Saunders 1988
 Paul Toon 1988
 Sarah Turton (Drake) 1988
 Claire Wardell 1988
 Kate Anderton 1989
 Jeannie Barber 1989
 Andrew Byford 1989
 Amanda Chisholm (Lloyd) 1989
 David Farwell 1989
 Lisa Harris 1989
 Alexis Huang 1989
 Ian Nash 1989
 Nick Simpson 1989
 Danielle Toutoungi 1989
 Andrew Barber 1990
 Emma Bloxham 1990
 James Bridges 1990
 James Dickinson 1990
 Alison Edey 1990
 Philip Edey 1990
 Huw Evans 1990
 Kirsty Hackshall (Searles) 1990
 Claire Hayes 1990
 Paul Howarth 1990
 Sally-Anne Huang 1990
 Richard Lofthouse 1990
 John O'Connell 1990
 Amanda Foreman 1991
 Garreth Hayes 1991
 Karl Holmes 1991
 Elizabeth McLeish 1991
 Paul Severn 1991
 Mike Shorthouse 1991
 Mark Taylor 1991
 Tim Day 1992
 George Hooper 1992
 Mark Langford 1992
 Liz Lindsay 1992
 James Lindsay 1992
 Shaun McEvoy 1992
 Cathy Newman 1992
 Nick Parish 1992
 Isabella Roberts 1992
 Clare Shoults 1992
 Christopher Bath 1993
 Chris Eason 1993
 Mark Haffenden 1993
 Clare Heard (Poyser) 1993
 Dean Underwood 1993
 Magnus Walter 1993
 Jenny Allen (Admans) 1994
 Richard Allwood 1994
 Gemma Allwood 1994
 Amy Becker 1994
 Mark Dwyer 1994
 Nick Gavin-Brown 1994
 Mike Jones 1994
 Andrew Knowles 1994
 John Locker 1994
 Rebecca Tuck 1994
 James Chard 1995
 Sam Coulthard 1995
 Laura Muir 1995
 James Scragg 1995
 Grant Tapsell 1995
 Alison Tysoe (Edge) 1995
 Rebecca Warren (Martin) 1995
 Alistair Weaver 1995
 Emma Bong (Truett) 1996
 Heather Mulahasani (Allsop) 1996
 Edward Song 1996

Peter Wainman 1996
 Simon Andrews 1997
 Stephen McGowan 1997
 Peter Churchill 1998
 Rachael de los Reyes-Churchill (de los Reyes) 1998
 Sam Gilbert 1998
 Jessica Haley (Slater) 1998
 Lucy Lewin (Warren) 1998
 Michael Noone 1998
 Christina Ransom (Edwards) 1998
 Katherine Walker (Trippe) 1998
 Lisa Webster (Mason) 1998
 Kitty Dinshaw 1999
 Kate Harden (Smith) 1999
 Naomi Holdstock 1999
 Simon Howarth 1999
 Chris Sandilands 1999
 Clare Stansfield 1999
 Evelien Visser 1999
 Roy Wouters 1999
 Johan Bergstrom-Allen 2000
 Doug Johnston 2000
 Madelaine Kelly 2000
 Tom Kelly 2000
 Emma Bloxham 2001
 Joseph Nwokobia 2001
 Marcel Priebisch 2001
 Peter Wilson 2001
 Catherine Beckett (McMillan) 2002
 David Matthews 2002
 Shaun Melvin 2002
 Christine O'Connor 2002
 Craig Walsh 2002
 Keelan Carr 2003
 Neil Gatland 2003
 Conor Moore 2003
 James Norris 2003
 Chloe Rogers 2003
 Anthony Tricot 2003
 Michael Hirst 2004
 Robbie Parkin 2004
 Michael Slavinsky 2004
 John Wells 2005
 William Chipperfield 2006
 Marcin Sawicki 2006
 Joel Aberbach
 Clive Holmes
 Margaret Hutchinson
 Gordon Lord
 Carrie Scott (Fehr)
 Richard Sommers
 Christopher Thompson
 Peter Watson
 Andrew Wright
 24 Anonymous Donors

Major Benefactors to the College

Alumni

Rita Ruhl 1941
Barbara Johnstone (Clegg) 1944
Celia Sisam 1944
Eileen Jones (Greep) 1947
Priscilla Tolkien 1948
Joanna Matthews (Roberts) 1948
Sheila Innes 1949
Sheila Douglas (Varey) 1949
Doris Drew (Broadfield) 1949
Margaret Matthews (Blears) 1950
Rosemary Hewlett (Baker) 1951
Anne Kaye (Holland) 1951
Judy Marshall (Sandison) 1952
Diana Atkinson (Laycock) 1953
Sylvia Countess of Limerick (Lush) 1955
Dilys Winegrad (Pegler) 1955
Susan Rose (Latham) 1955
Yoma Ullman (Crosfield) 1955
Louise Grattan (Jopling) 1956
Ruth Leslie 1957
Virginia Makins (Shapiro) 1957
Patricia Neate (Mulligan) 1957
Mary Martineau (Haines) 1958

Lisa Miller (Davies) 1958
Anne Simor (Crowe) 1958
Gay Gervin 1959
Hazel Archer Sanger (Archer) 1959
Deh-I Hsiung 1959
Joella Werlin 1959
Virge James (Taul) 1960
Lady Tugendhat (Julia Dobson) 1960
Diana Allan (Cotton) 1960
Jillinda Tiley (Draper) 1960
Gillian Perrin (Hughes-Thomas) 1961
Maureen Cruickshank (Ware) 1960
Piffa Schroder (Holt) 1961
Carol Stewart 1962
Diana Guy (Eade) 1962
Veronica Warner (Smith) 1962
Baroness Sarah Hogg (Boyd-Carpenter) 1964
Paula Flynn (Field) 1964
Ann-Margaret Walton (Willis) 1965
Rosalind Jay (Walker) 1965
Annette Haworth (Dyer) 1965
Nancy Johnson 1965
Mari Prichard (Pritchard) 1966
Penny Freer 1967
Sarah Page (Bramhall) 1967
Margaret Williams (Hillier) 1967

Susan Buckee (O'Flaherty) 1967
Pauline Weetman 1967
Jean Cooper 1968
Paula Griffiths 1968
Dame Frances Lannon 1969
Linda Montgomery (Merrall) 1969
Faith Boardman (Mills) 1969
Anna Walker (Butterworth) 1969
Jane Douglas 1970
Pamela Lighthill 1970
Janet Clayton 1970
Jane Murphy 1970
Margaret Coombe (Mallaband) 1971
Sue Scott (Dean) 1971
Sian Cheverton (Rees) 1972
Nali Dinshaw 1972
Linda Muirhead (Johnson) 1973
Susie Furnivall (Hamblen) 1973
Sarah Wookey 1974
Frances Thomas (Brown) 1974
Rachel Craig (Salisbury) 1974
Jo Andrews 1974
Annie Bentley 1975
Suzanne Franks 1975
Angela Jameson 1976
Laura Shuttleworth (Honigsberger) 1976
Nicky Manby (Croome) 1976

Judith Ingham 1977
Ann Handford (Wilson) 1977
Isabel Hudson (Draper) 1977
Cathleen Blackburn (O'Mahony) 1978
Louise Nicholson (Green) 1978
Roger Ramsden 1979
Stephen Hester 1979
Mark Hanley-Browne 1979
Geoff Skingsley 1979
Julian Nott 1980
Nick Burge 1980
Clare Spacie (Sylvester) 1980
Dame Nerys Jefford 1981
Derek O'Neill 1981
Mark Gay 1981
Tom Drury 1981
Andrew Bungard 1981
Jenny Carey (Dodge) 1981
Carol Oster Warriner (Gibson) 1981
Blair Crawford 1982
Richard Buxton 1982
John Shipsey 1983
Doug Shaw 1983
Neil Tottman 1983
James Williams 1984
Catherine Lawes 1984
Mike Baxter 1985
Martin Giles 1985
Nile Lanning 1985
Robert Newry 1985
John Graham-Cumming 1986

Ian Kirk 1986
Julian Granville 1986
Adam Rubinson 1986
Tim Ewington 1987
Baroness Finn (Simone Kubes) 1987
Mark Kraiss 1987
Simon Bentley 1987
Hong-I Chen 1987
Jennifer Oughourlian (Banks) 1988
Huw Evans 1990
Kirsty Hackshall (Searles) 1990
Amanda Foreman 1991
Karl Holmes 1991
Shaun McEvoy 1992
Howard Hogan 1992
John Locker 1994
Mark Dwyer 1994
Xavier Van Hove 1994
Kossen Ho 1995
Boon Kwan 1996
Rui Nie 1997
Evelien Visser 1999
Stuart Valentine 1999
Michael Shang 2002
Bryan Koo 2002
Ernesto Feliz 2005
3 Anonymous Donors

Fellows

Alan Rusbridger, Principal

Emeritus Fellows

Clive Holmes
Penelope Probert Smith
Richard Sommers 1975

Foundation Fellows

Dame Vivien Duffield (Clore) 1963
Anna McNair Scott (Colquhoun) 1964
Donald Fothergill 1980
Guy Monson 1981
Michael O'Sullivan 1982
Neil Simpkins 1984

Honorary Fellows

Jennifer Montagu 1949
Juliet Campbell (Collings) 1954
Fiona MacCarthy 1958*

Honorary Research Fellows

Ann Hutchison 1963
James Carley
Mark Robson

Visiting Fellows

Suzelle Smith (Moss) 1975
Don Howarth

Friends

Sir David Attenborough
Jim Buckee
Gus Carey
Tal Fane
Paul Hewlett
Peter Johnson
Tom Kaplan
John Kelly
Donald Koo
Benny Lau
David Law
Jean Lawes
LMH Three Peaks
Challenge Donors

John Mills
Alan Montgomery
Joseph Oughourlian
Charles Perrin
Chloë Teacher
Conor Quigley
Gail Sinai
John Walton
1 Anonymous Donor

Trusts, Foundations, Companies and Other Groups

Alexander Mosley Charitable Trust
Clare Duffield Foundation

Craigmore Sustainable Holdings Limited
Don Howarth and Suzelle Smith Foundation
Heritage Mark Foundation
IKEA Foundation
Issachar Fund
Ockenden International Open Society
Foundations - Zurich
Oxford University College Contributions
Santander UK plc

Advisory Council

Jennifer Oughourlian (Banks) 1988, Chair
Neil Simpkins 1984, North American Chair

Hazel Archer Sanger (Archer) 1959
Mark Beer 1990
Jenny Carey (Dodge) 1981
Blair Crawford 1982
Vivien Duffield (Clore) 1963
Amanda Foreman 1991
Isabel Hudson (Draper) 1977
Richard Hunt, Development Director (from July 2020)

Dame Nerys Jefford 1981
Harriet Kemp 1979
Andrew Macdonald, Treasurer
Dame Judith Macgregor (Brown) 1971
Jackie Perry 1970
Tim Pottle, Development Director (until March 2020)
Diana Quick 1964
Alan Rusbridger, Principal
Suzelle Smith (Moss) 1975
Xavier Van Hove 1994
James Williams 1984

If you would like to help LMH face the challenges of the next few years, please contact:

Richard Hunt, Development Director
Lady Margaret Hall, Oxford OX2 6RL

Telephone: **+44 (0)1865 274362**

Email: **development.director@lmh.ox.ac.uk**

We are most grateful also to the many alumni who in the last year have given their time, valuable advice and expert knowledge, in serving on College Committees, leading Year Group projects, in writing articles and producing publications, in giving talks and lectures, or in providing venues and hospitality at events away from College – all for the benefit of LMH and their fellow alumni.

"I still remember crying the whole train ride home from Oxford to Cornwall after interviews, as I had fallen in love with LMH and was convinced I hadn't got in. So to have graduated, and received a prize, means so much to me. I come from a small village in rural Cornwall, and my school didn't have a history of sending students to Oxbridge. I struggled with imposter syndrome during my time at Oxford and I don't think that will ever go away, but receiving the Parker Prize has been an important confidence boost. Not only is it an invaluable support financially, but it also makes a great difference to applications for jobs and further study.

I am most interested in human rights law, non-discrimination law and criminal justice. While at Oxford, I volunteered with an asylum law clinic and disability rights projects, such as a project mapping the accessibility of Oxford colleges. I really value the opportunities I had to apply skills and knowledge gained in my degree to help vulnerable and marginalised members of our community. I am now pursuing a career in human rights law, specifically as a Barrister and with NGOs. I spent the summer interning with JUSTICE, a law reform and human rights organisation; this was a really exciting insight into how I can use my law degree to effect change.

I feel so lucky to be a part of the LMH family, and have benefited from the generous support of alumni during the course of my degree. Thank you."

Amy Kerr (2016 Jurisprudence with Law in Europe)



"Thank you all, for providing me with the resources and opportunity to gain the most from my Oxford education without the worry of financial difficulties. My Bursary has given me the financial freedom to fully immerse myself in my German studies."

Savannah Stanislaus (2020 German)



The Development Office, Lady Margaret Hall,
Norham Gardens, Oxford OX2 6QA
Email: development@lmh.ox.ac.uk
Website: www.lmh.ox.ac.uk/alumni
Telephone: +44 (0) 1865 274362



LMH

Lady Margaret Hall