



LMH
Lady Margaret Hall

Thank You

LMH Philanthropy Report 2023

LMH Philanthropy Report 2023

From the Principal	3
Thank You from the Director of Development	4
The Treasurer's Update	5
LMH is for Life: legacy gifts for today and tomorrow	6
Recognising Your Giving	7

Developing Minds	8
The impact of alumni support on History teaching at LMH	9
The Clive Holmes Fellowship in History	10
My Research in 100 Words	11
Junior Research Fellows	12
Encouraging Music at LMH	15
Life as a Ukrainian Graduate Scholar	16
Investigating Urban Space	17
Oxford Pakistan Programme Scholars 2023-24	18

Developing our Community	19
The Jewel in our crown: plans for the College Gardens	20
Decarbonising Eleanor Lodge	21
Green Giving Day	22
Academic Wellness: Holistic support at the heart of an LMH education	24
From the Heads of Wellbeing	27
LMH Foundation Year – final students graduate	28
Evolving Outreach	29
Spotlight: Alumni Volunteering	30
My LMH Story	32

Donor Roll	33
-------------------	-----------

LMH is for life

Legacies have made LMH what it is today and will make it what it can be tomorrow.

Including LMH in your Will is a life-affirming way to secure the future of the College and those we teach, for the long term. Your legacy will help our pioneering spirit live on, supporting and inspiring talented students from every background to share experiences that last a lifetime.

To find out more about leaving a legacy to LMH, please contact Carrie Scott, Deputy Development Director: carrie.scott@lmh.ox.ac.uk; +44 (0)1865 274362



“As our lives and careers have progressed, we reflect on our time at LMH with increasing appreciation. In addition to many fond memories, the College provided us with an academic grounding that has underpinned everything we have achieved professionally since. In particular, we benefitted from the tuition of the late and brilliant Professor Sir Chris Dobson, in whose ground-breaking research group we first met. We are regular visitors to LMH and are delighted with the way the College has evolved through its development campaigns and the pioneering Foundation Year programme. Leaving a legacy to LMH will help the College support its students and nurture the professionals of the future.”

Jamila Fattah (1988, Chemistry) and Nick Burke (1987, Chemistry)



From the Principal

Dear alumni and friends,

Thank you for your remarkable support of Lady Margaret Hall. In the past year, the College has received a record amount of philanthropic investment. I am deeply grateful for your engagement with and commitment to the College.

Your philanthropic giving has a lasting impact on our core academic mission and is felt across the whole College. In the last year your gifts have endowed our Engineering Fellowship and our Academic Wellness programme. You have helped us to secure a new Junior Research Fellowship in AI, one in the Humanities and a further two in Chemistry. Your investment in LMH helps us strengthen core aspects of College life – excellence in teaching, learning and research. It also means that we can continue to lead on increasing access and reducing barriers to an Oxford collegiate education.

In the following pages you will read about the impact of recent projects which demonstrate the transformative effect of your philanthropy to the life of the College community. Thank you for your belief in what we do, and for helping us champion the academic aspirations of the most talented scholars, regardless of background or circumstance.

LMH is a leading college in a university that has, for the eighth year in a row, been ranked as the world's best.

We are blessed with world class academics at LMH who provide an extraordinary educational experience. However, we operate within a globally competitive environment, especially for faculty and postgraduates, and at a financial disadvantage relative to other Oxford colleges. This iniquity within Oxford, which has direct impact on both our students and Fellows, is one of the great challenges facing the College as we look towards the future, which your continued support enables us to address.

We have work ahead to secure LMH's finances, providing us with the stable foundation from which to adapt to a rapidly changing world. In 2028-2029, we will celebrate the 150th anniversary of the College's foundation and the arrival of its first students. We have come a long way since 11 October 1879 when our first nine students moved from room to room in Old Old Hall to avoid smoking chimneys. As we reflect on our rich history, we look towards the next 150 years, and the immense potential that you can help us realise.

On behalf of the Governing Body, thank you for your advice, support and leadership. We are very grateful for your continued commitment to Lady Margaret Hall.

Professor Stephen Blyth, Principal

Thank You from the Director of Development

Sam Allard



2022/23 was a record year for LMH in terms of donations from alumni and friends.

An incredible £4,337,048 was received in gifts (compared to £3,269,687 in 2021/22), with 1174 supporters making a donation. These gifts enable LMH not only to provide the special

collegiate experience of which we are all so proud, but also to continue developing and responding to the evolving needs within our community. As you will see from this report, **LMH continues to proudly lead the way in our student outreach and support provision**, despite being at a financial disadvantage in comparison to most other colleges, with students recognising LMH as a place to flourish academically and personally.

Although the numbers alone represent impressive support for LMH, it is the stories of individual donors and their reasons for giving, often over many years, which makes our work in the Development Office feel both humbling and valuable. Every week I am privileged to meet alumni and hear their memories of College, where life has taken them since, and why it is they choose to support LMH. From those who want to “give back” in recognition of the often life-changing experience that they had at LMH and the path an Oxford degree led them to take, to those who see the challenges students face today and want to ensure that current and future generations can continue to benefit from the LMH collegiate experience they so value. **Whatever it is that motivates you to support LMH, thank you.** Please do share your stories – we love to hear them!

We are truly reliant on donors’ generosity to provide the full Oxford collegiate experience: student tuition fees do not cover the cost of the tutorial system and

our rents are already amongst the highest within the colleges. From loyal donors who make a regular gift, including our *Souvent* members who have supported us for 10 years or more, to those helping us build our endowment and fund other leading initiatives, to those who include LMH as a beneficiary in their will, we truly are grateful for everyone playing a vital role in LMH’s present and future.

We have big ambitions under Professor Blyth’s leadership: to increase our annual income to give College the flexibility to meet its most pressing needs – be they academic, facilities, support or outreach related, and also to significantly grow our endowment. The endowment is our security and the larger the reserve is, the higher the annual returns to fund College life each year. LMH has one of the smallest endowments in Oxford (c£50m) compared to the richest College at c£650m – meaning that we start each financial year with around £18m less in returns to spend. **It is our goal to improve our financial stability so that LMH is no longer one of the poorest colleges, and sits instead in a far stronger position to enter the next 150 years.** With the help of our supporters we wish to endow the aspects of College life which are precious, such as our Tutorial Fellowships, facilities and student support initiatives, so that they are protected from financial uncertainties and secured at LMH for generations to come. **I am confident that if our alumni and friends contribute at whatever level they feel able, together we can ensure that LMH has the financial backing it deserves.**

LMH is a family – of students, staff, fellows and friends, past and present. We recognise the special value of our community and the lifelong relationship membership provides. **This remains your home in Oxford and we, its caretakers, will continue to do our best to preserve this special college for you.** Thank you on behalf of everyone at LMH for all you do to enable us to flourish.

Anna Bates, Director of Development

The Treasurer's Update



Despite the difficult economic climate, the College's finances are gradually improving. 2022/23 was always going to be a testing year because of inflation in the aftermath of the Covid pandemic, and the inability of the College to pass on increased costs quickly. Inflation is estimated to have

been 14.4% for Oxford colleges last year, significantly higher than headline national figures such as CPI. The College reported its fourth deficit in a row – £0.4m on turnover of £15.7m in the management accounts.

Salary costs, representing more than half of our expenditure, rose above budget. The Oxford jobs market remains particularly tight. Some posts were almost impossible to fill. To remain competitive and retain staff in a very hard year for family finances, the College made an ex gratia cost of living payment at Christmas and either backdated part of the 2023/24 award or followed the Oxford Living Wage before the year end.

Although the College had hedged much of its energy price exposure in advance of last winter, price spikes in gas and electricity markets, following reports of potential security of supply issues, were unhelpful. The flipside was a focus, by staff and students, on energy efficiency.

2023/24 appears to have got off to a strong start. Our staff turnover figures have gone back to their historical lower levels. We are maintaining high levels of service with less resource. The College completed the refurbishment of Eleanor Lodge within budget with the support of a Government grant and the Bursar is confident that this will lead to energy efficiency savings in a critical corner of our estate (see page 21).

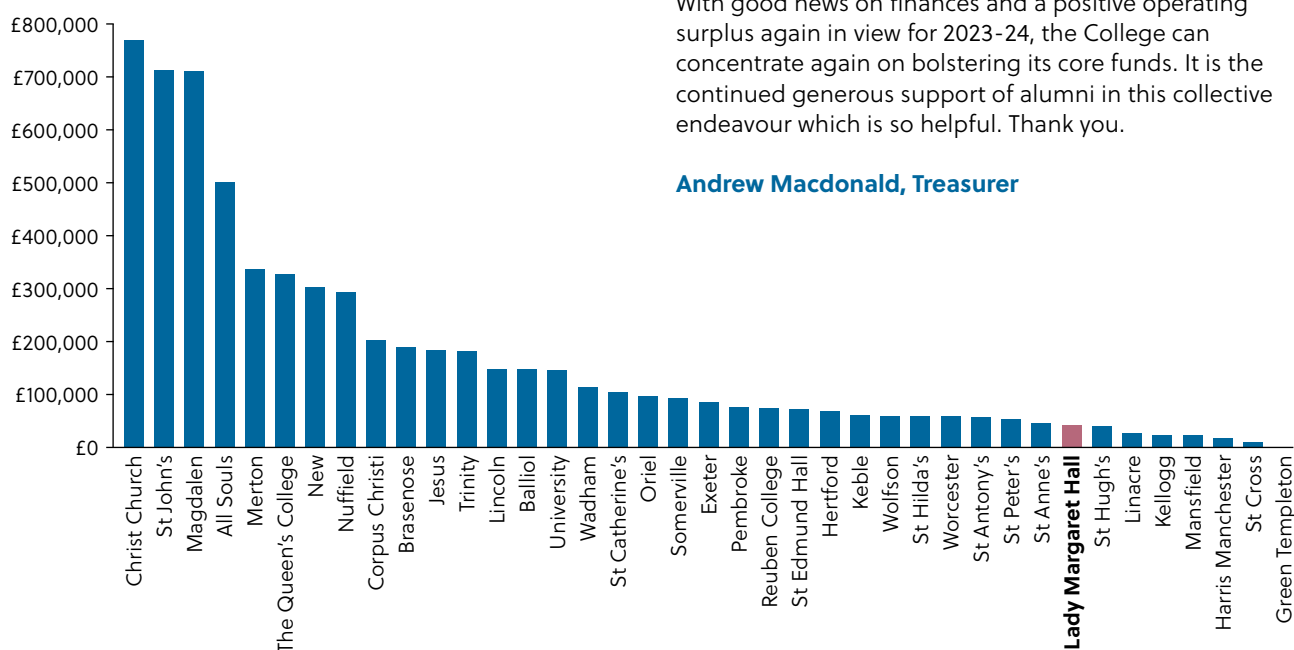
Investment in our commercial businesses during the pandemic is also beginning to pay dividends. The College had its best year ever in 2022/23, with turnover rising to £2.8m. We are attracting students from all over the world and establishing some very topical and popular programmes, with the opportunity for on-line attendance using our new Audio-Visual systems. Hosting Conferences and Short Academic Programmes is a whole-college activity, involving all the departments and many academics who teach or support the programmes in their vacations.

Our Development Team also had a very strong year, particularly for scholarships and in the permanent endowment of various Tutorial Fellowships. The chart below shows the relative position of LMH in terms of other college endowments. At the moment, LMH draws down approximately half the distribution available to the median college to fund its operations.

With good news on finances and a positive operating surplus again in view for 2023-24, the College can concentrate again on bolstering its core funds. It is the continued generous support of alumni in this collective endeavour which is so helpful. Thank you.

Andrew Macdonald, Treasurer

Endowment Funds by College group 2021-22 (£'000's)



LMH is for Life: legacy gifts for today and tomorrow

Writing or updating your Will is something we tend to put off, waiting for a better moment, the right moment, for uncertainty to pass. There is much to consider when planning for the future, who to include and whether or not to leave something to those charities that mean something to you. And today there are many worthy causes grappling for our attention.

Changing a life is life-changing. Legacy gifts help the College's pioneering spirit and the philanthropic impact of the donor to live on. Many of our legators tell us that their time at LMH was transformational and that they wish to include LMH as a beneficiary in their Will as a token of their appreciation and/or to enable students of the future to share the experience. **Will you join them and include LMH in your Will?**

In the last year legacy gifts have increased significantly, in the number of alumni and friends pledging their future support and also in the income we have received from the estates of alumni, fellows and friends. Between August 2022 and July 2023, we received 28 new legacy notifications – the most for many years! At the time of writing, **the Beaufort Circle stands at 306 members, amongst the largest society of legacy donors within Oxford colleges** – testament to the value people attribute to LMH's place in their lives, minds and hearts. The income we received from legacy gifts last year was also the most for several years, coming in at £1.09m.

We take our responsibilities towards how we use gifts from donors very seriously, particularly those made through legacies. Therefore, where finances allow, and in line with our strategy of improving the College's financial stability, **we are investing unrestricted legacies of more than £10,000 in the endowment.** This supports our long-term aim to financially secure the areas of College life which we see as vital including our Tutorial Fellowships, facilities and support services, and ensures that legacy gifts have an impact for generations to come. On Page 9, Dr Grant Tapsell (1995 History), Tutor and Fellow in History, tells us how legacies have recently benefited History endowment funds.

Thank you so much to everyone who has included LMH in your Will; your gifts will support and inspire talented students from every background to share experiences that last a lifetime.

For a full list of Beaufort Circle members, please see pages 36 and 37.



Remembering Margery Ord

In recognition the significant legacy received from the estate of Margery Ord, Tutor and Fellow in Biochemistry from 1952 – 1988, the College has named a Biochemistry Fellowship in her honour. In addition to her academic teaching and research, Margery held a number of College offices including those of Treasurer, Dean and Tutor for Graduates, and will have played an important role in the lives of a great many members of the LMH community. We have invested her gift in our endowment to support College now and in the future. Professor of Computational Biochemistry Phil Biggin, is the Ord Fellow and Tutor at Lady Margaret Hall. (See p44 of LMH News 2023 to read about how ground-breaking work in progress at the Biggin Lab could point the way to better treatments for a wide range of diseases.)

To find out more about leaving a legacy to LMH, or to let us know about a gift you have already pledged, please contact Carrie Scott, Deputy Development Director: carrie.scott@lmh.ox.ac.uk; +44 (0)1865 274362.

Recognising Your Giving

We are extremely fortunate to have the support of so many alumni and friends who believe in what the College is doing to educate the brightest young minds.

For almost 20 years we have recognised, through specifically named donor groups, those who make regular gifts (*Souvent me Souviens** group), those who make pledges to LMH in their wills (*The Beaufort Circle*) and major donors (*The Elizabeth Wordsworth Society*). In late 2021, to better celebrate the transformative impact of major gifts upon the College, we developed Circles of Benefaction. These groups, building on the original *Elizabeth Wordsworth Society*, are named after important figures from LMH's history:

Jex-Blake Circle

Named after Henrietta Jex-Blake, Principal of LMH during the First World War, in recognition of cumulative gifts between **£10,000 and £24,999**

Elizabeth Wordsworth Circle

Named after LMH's first Principal, Elizabeth Wordsworth, for cumulative gifts between **£25,000 and £49,999**

Talbot Circle

Named after Edward Talbot, the young Warden of Keble, and his wife Lavinia, whose vision and commitment to women's education resulted in the foundation of LMH in 1879, in recognition of cumulative gifts between **£50,000 and £99,999**

Principal's Circle

Our Principal's Circle recognises cumulative gifts of more than **£100,000**

These Donor Circles have been growing ever since and, at the time of writing, there are now 269 members across the four groups. In addition to listing within our Donor Roll, membership of a Circle includes invitations to special events that enable donors to stay connected with College life, which provide opportunities to meet members of the College community whose work they are supporting, as well as other Circle members.

Gifts from these groups of donors have enabled us to transform many aspects of life at LMH, from endowing academic Fellowships, to establishing scholarships and student support funds, to supporting outreach initiatives.

They have helped us to enhance our buildings and gardens, and to upgrade the College's Wi-Fi provision to provide better connectivity for our students and guests. Open gifts have also given us the flexibility to meet urgent demands.

If you would like to hear more about the Donor Circles please contact Anna Bates, Director of Development:

**development.director@lmh.ox.ac.uk
+44 (0)1865 274362; 07975 963292**

*from the College motto: 'I remember often'.



Developing Minds

One of our core priorities is to build our academic endowment to secure the funding of our Tutorial Fellowships.

Under the current funding system, UK students attending UK universities pay tuition fees capped by the government at £9,250pa – reflecting what was estimated to be the average cost of such provision across the sector in 2017. Notwithstanding the rise in costs over the last six years, this figure did not take into account the (costly) provision of Oxford's treasured tutorial system. With no government funding provided, we are wholly reliant on external funding to sustain our Tutorial Fellowships. Our goal, therefore, is to endow at least one Tutorial

Fellowship in each subject at LMH to secure its funding and thereby the teaching provision in College, in perpetuity.

Thanks to the generosity of alumni and supporters over the years, through lifetime gifts and legacies, we have secured Fellowships in a handful of subjects including French, Medicine and Economics, and will continue to work with supporters to reach our goal.

If you would like to find out more about contributing to a Fellowship please contact Anna Bates, Director of Development:

**development.director@lmh.ox.ac.uk
+44 (0)1865 274362; 07975 963292**

The impact of alumni support on History teaching at LMH

Dr Grant Tapsell (1995, History), Fellow and Tutor in History, explains how recent changes in approach to the designation of larger legacies have begun to impact teaching provision in the College.

LMH has many wonderful features, but vast wealth is not, alas, amongst them. Our endowment is only around a third of the average college endowment and our cloth therefore has to be cut accordingly. For a college of our size we should have three permanent fellows on site, as many of our comparator colleges do: Somerville and St Anne's each have three History fellowships and Magdalen and Balliol each have four. We have just two, and, like many of the Fellowships at LMH, neither of these is endowed.

In this context we necessarily rely on the generosity of alumni and other benefactors to help maintain the tutorial system that is at the heart of Oxford academic life. We welcome gifts to support, in the shorter term, the annual costs of teaching, and in tandem, the longer term building up of our endowment. To this end, we have benefitted from the magnificent legacy provided by Anne Whiteman (LMH Tutor 1946-85; Fellow from 1948) which formed the basis of the History Fellowship endowment fund. The annual interest from this has provided the mainstay of the funding for successive History lecturers in College since the early 2000s. In the past couple of years, the subject has benefitted profoundly from the College's decision to divert significant legacies to the endowment. Since 2021, this has amounted to some £450,000 invested and includes in particular, a munificent gift from the estate of Priscilla Bain (Blunt, 1943). The interest from these legacies has significantly augmented the Anne Whiteman fund, and consequently reduced the burden that History posts place on the college's daily finances. I note that the total sum of legacies received from History alumni now stands at around two-thirds of the £2.3m total that is required to endow a third fellowship in the subject. I hope to be

at LMH long enough to welcome such an additional colleague: it would be quietly transformative for what we can offer our students in terms of courses covered and pastoral support offered.

In the shorter term it has also been very moving to witness the generosity of former students and colleagues looking to support a five-year post in memory of Clive Holmes (Fellow 1987-2011) who died in July 2022. The majority of the £337,000 funding needed for this has now been received – a wonderful tribute to an inspirational tutor and brilliant scholar. We hope to be able to advertise this post to start in either 2024 or 2025, depending on when we reach the total.

Lastly, our History students continue to benefit from the generosity of C.V. (Dame Veronica) Wedgwood (1928, History), whose book royalties were bequeathed to LMH. These fund several annual awards, including a prize for the best performance in Prelims and one for the best thesis submitted by an LMH candidate to the final examiners.

My newly appointed colleague as Fellow and Tutor in History, Dr Josh Bennett, and I are very conscious of the debt that our subject owes on an ongoing basis to LMH's History alumni. Should potential donors wish to discuss any aspect of the subject at LMH today, we would be very happy to meet them.



The bench in the gardens given in Clive's memory sits in his favourite spot looking up river



The Clive Holmes Fellowship in History

Thank you to everyone who has supported the Clive Holmes Fellowship in History. We are honoured to name this new senior position in memory of Professor Clive Holmes, who sadly passed away on 25th July 2022 at the age of 78.

Professor Holmes was Fellow and Tutor in History at LMH from 1987-2011. During this time he was not only an exceptional tutor, but also an inspiration to countless students. He was widely respected by his peers, and was elected to the Council of the Royal Historical Society in 2004. Many of Clive's students stayed in touch with him years after leaving LMH, and there was an outpouring of fond remembrances shared at his memorial service in LMH on 29th October 2023.

The Clive Holmes Fellowship is a five year position that will greatly enhance the provision of History teaching at LMH – one of the biggest subject groups at the College. Funding this position will enable us to provide additional

pastoral and academic support to History students, and will enable the existing Fellows to spend more time on teaching and research.

Thanks to the generosity of our alumni and supporters, we have raised £312,000 of the £337,000 required to fund the Fellowship so far. A generous donor has pledged to help us raise the remainder of the funds by matching any gift made to the Fellowship by the end of 2023.

Thank you once again to those who have helped us get this far. Your support will make a huge difference to future cohorts of Historians at LMH.

If you can help us complete the funding for this important opportunity to enhance the teaching of History at LMH, please contact Anna Bates, Director of Development: development.director@lmh.ox.ac.uk; +44 (0)1865 274362; 07975 963292 or use the enclosed donation form.

My Research in 100 Words

The range of research being undertaken by our Fellows is remarkable. We set four LMH Fellows the challenge of summarising their research and its potential impact in 100 words or less.

Professor Jill O'Reilly (Fellow and Tutor in Experimental Psychology)

“ I am interested in how people make decisions and plan their activities. Most of my research uses ‘economic games’ (would you rather have £10 today or £50 this time next year?). I use mathematical and computer models to try to understand how people should answer such questions, and how their answers will change depending on circumstances (for example, how much you have in your bank account today) and brain states (balance of brain chemicals such as dopamine and serotonin). I also make use of brain imaging to try and understand the mechanisms underlying these decisions. ”

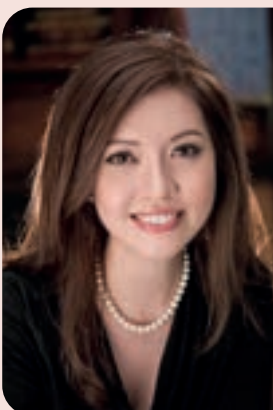


Dr Guy Westwood (Associate Professor in Greek Language and Literature, Fellow and Tutor in Classics)

“ My research focuses on classical Athens under the democracy, and specifically on the culture of speechmaking to mass citizen audiences in the city’s political assembly and law-courts. My work examines the rhetorical techniques used in these venues by two leading politicians (Demosthenes and Aeschines) in their surviving speeches, following on from my 2020 OUP monograph on their persuasive – and often misleading – uses of Athenian history. I am planning a full scholarly commentary (the first since the 1890s) on Aeschines’ lively law-court speech Against Ctesiphon, and am becoming increasingly interested in the relationships between political performance and comic drama. ”

Professor Robin Harding (Gillian Peele Fellow in Politics, Professor of Politics)

“ My existing and ongoing research agenda focuses primarily on the relationship between political institutions and distributive politics. This agenda has three main strands: (i) the effect of democracy on the provision of public goods and services; (ii) electoral accountability and policy attribution; and (iii) political violence and state capacity. Current projects include research investigating the impact of coups on social trust in sub-Saharan Africa, with a particular focus on the effects of the 2022 coups in Burkina Faso, and a study of how terrorism affects education outcomes in northern Nigeria. ”



Professor Vanessa Ferreira (Fellow and Professor of Cardiovascular Medicine)

“ I have expertise in quantitative Cardiovascular Magnetic Resonance (CMR) techniques, particularly parametric-mapping, and their clinical applications for investigation of cardiovascular diseases. One of my goals is to advance CMR methods to investigate and manage cardiovascular diseases in ways not previously possible, in a non-invasive way. Another is to minimise the need for injection of contrast agents for diagnostic images; this can eliminate adverse reactions to contrast agents, and also lead to savings in time and cost, allowing more patients to benefit from CMR. My research group is highly collaborative and interdisciplinary, working together with MR physicists, engineers, biomedical imaging experts, AI computer scientists and clinicians from a range of specialties, to help to tackle and reduce the burden of cardiovascular diseases. ”

Junior Research Fellows

Chris Dobson Junior Research Fellows 2023

We are delighted to share that, thanks to the generosity of our alumni and friends, we have raised £113,500 towards the Christopher Dobson Research Fund. We are grateful to everyone who has supported the programme so far. The Research Fund will support the cost of JRFs and DPhil students in the Chemistry and Biochemistry Departments. Our goal is to raise £350,000 in total, which would fund scientists working in Professor Dobson's field for the next 20 years. If you can help us reach this target, please contact the Development Office or use the enclosed donation form.

Dr Sean Burnap joined the lab of Dr Weston Struwe in the Oxford Department of Chemistry, based in the Kavli Institute for Nanoscience Discovery (Kavli INsD), at the start of 2022. The Kavli INsD is a ground-breaking interdisciplinary science institute focused on world-class nanoscience research, and Sean's current research focuses on the application of cross-linking mass spectrometry to explore glycan-dependent viral-host protein interactions. Realisation in Sean's own work investigating spike viral glycoproteins made clear the important, and relatively understudied role glycosylation plays in the ability of viral proteins to interact with host receptors, but also evade immune detection. Due to the largely heterogeneous nature of glycosylation, interactions involving glycans are exceedingly difficult to study. Sean's goal is to solve this problem and transform our ability to unpick these complex glycan-dependent relationships.

Before joining the Struwe lab Sean was a postdoctoral research associate within the lab of Professor Manuel Mayr at King's College London, having conducted his PhD in the same laboratory where his research centred on cardiovascular disease, which was funded by the highly competitive British Heart Foundation mRes PhD programme. Specifically, he developed and applied multiple -omics mass spectrometry technologies in the context of high-density lipoprotein composition, interrogating how this composition related to function and the risk of coronary artery disease. At the onset of the Covid pandemic Sean redirected his research and leveraged his skillsets in mass spectrometry to study SARS-CoV-2 biomolecular interactions. These research projects galvanised Sean's interest in the development of structural mass spectrometry techniques and their unique potential to uncover mechanisms of glycoprotein interactions.



“It is a great honour and privilege to be awarded the Chris Dobson Junior Research Fellowship in Molecular Biophysics at LMH. Chris Dobson's own research career spanned multiple fields and disciplines, harnessing the use of biophysical techniques to revolutionise our understanding of protein folding, particularly in the context of amyloid formation. Critical to the profound scientific contributions made by Chris Dobson were the collaborative links fostered. I am incredibly excited by the prospect of joining LMH and, importantly, building collaborative relationships with new colleagues.”

Dr Sean Burnap



“ I am immensely grateful for the opportunity to serve as a Chris Dobson Junior Research Fellow at Lady Margaret Hall. This fellowship isn't just an honour, but a personal commitment to uphold and further the profound legacy of Professor Sir Chris Dobson. The fellowship opens the doors to a vibrant academic community and offers the freedom to delve deeper into my research. Your generous support has made this transformative opportunity possible, and for that, I am truly thankful. ”

Dr Oliver Pambos

Dr Oliver Pambos obtained his PhD in molecular biophysics in the Cavendish Laboratory at the University of Cambridge, working on single molecule protein unfolding using electric fields, nanopores, and optical tweezers. He then moved to a postdoctoral position in the Department of Chemistry at Cambridge working to research methods for the rapid sorting of cells using a phenomenon known as dielectrophoresis.

He currently works within the Department of Physics and the Kavli Institute for Nanoscience Discovery here in Oxford, in the lab of Prof Achillefs Kapanidis, where

he constructs advanced super-resolution microscopes to study in living cells the behaviour of RNA polymerase, the protein at the centre of transcription and essential all known forms of life. By studying this protein and its partners at a resolution beyond the diffraction limit of light, he aims to redraw our understanding of how these proteins interact with one another to transcribe DNA and regulate gene expression.

IKEA Foundation Junior Research Fellow 2018-2023



During her tenure as IKEA Foundation Junior Research Fellow at LMH, **Kathrin Bachleitner** focused on exploring the complex legacies of war and how their contemporary interpretations shape national communities, normative perceptions, and political attitudes. With the generous support of the Foundation, Kathrin

was able to employ research assistants (three of whom were themselves Ukrainian refugees) to help her to collect a large data set, including ca. 800 online and in-person interviews with refugees in countries including Syria, Palestinian Territories and Ukraine.

Kathrin's research gauged the options for reintegration and resettlement of refugees and the displaced. She has published these findings in major academic journals and is currently writing a book, which outlines connections between people's lived experience of war and

victimhood and their visions of peace, their willingness to compromise and their ideas of community.

Kathrin completed two further research projects during her time at LMH. The first concerned the role of colonial memories at the UN Security Council and their influence on its decisions for or against humanitarian intervention in Libya and Syria. Kathrin used minutes from UN Security Council meetings to examine which widely resonating past experiences were invoked and for what purposes when discussing possible interventions. Her paper highlighted commonalities and divides within the international community of states by pointing to the invocation and resonance of global memories and their shared meanings.

The second research project concerned the dynamics sparked by diverse memories of conflict in global politics. Kathrin conducted a mixed-method analysis of two memory dynamics put forward in theory: memories that can compare with others, offering the potential to create solidarity between people who suffered war and displacement, and memories that can compete for the superiority of one experience of conflict over another, leading to a run towards victimhood and a pre-eminence in a perceived hierarchy of suffering.

While previous research on memory dynamics within International Relations focusses on the state level, Kathrin's research defined memories of conflict as individual interpretations of experiences of war and suffering, and used the accounts of 200 ordinary Syrians, Palestinians and Israelis to interrogate the diverse ways in which these memories interact in those who have themselves been affected by conflict, war and displacement.

Beyond her research output, Kathrin successfully organised three IKEA Foundation symposia. In the future, she plans to continue her research on the legacies of war on people, refugees in particular, and how their national attachment and political ideas change due to their experiences. She has taken a new position as a Senior Political Scientist at the University of Salzburg, where she is continuing to pursue and develop her research.

We were very grateful to Kathrin Bachleitner for giving the inaugural Wordsworth Lecture on 26th February 2023.



zerophoto/adobe.stock.com

Joyce Pearce Junior Research Fellow 2019-2023



Dr Dilar Dirik left the College this summer, having completed her research project "Justice and Autonomy Quests at the Margins of the Nation-State". This mapped layers of statelessness and self-determination by focusing on the history and current practice of self-organising communities in the Middle East in the

context of war and forced displacement. In particular, she analysed the sites that organise themselves along the Kurdish freedom movement's notion of 'democratic autonomy', which included autonomously-organised camps in various regions of the Middle East. The project asked two questions. Firstly, "What can we learn about democracy and freedom concepts by looking at practices of self-determination, including those led within refugee contexts, that seek to transcend the nation-state?" And secondly, "to what extent are justice or autonomy possible without the state?" Furthermore, Dr Dirik examined women's quests for justice in the aftermath of episodes of large-scale political violence. Drawing on feminist ideas around transformative justice, she reviewed the ways in which women in the region define their means of political action between legal frameworks and system change. Finally, the project made theoretical contributions to the study of statelessness and non-state resistance.

During her time at LMH Dr Dirik frequently engaged with various media and activist circles to intervene in ongoing issues in the world, including the impact of the Covid-19 pandemic on vulnerable communities, developments in the Middle East, and the 2023 earthquake in Syria/Turkey. In 2021, she co-curated a year-long lecture series at LMH, titled 'Black Histories and Futures'. At the University's Refugee Studies Centre, she organised several in-person events before the outbreak of the Covid-19 pandemic, and with the University's Public Engagement with Research Fund, she launched a six-episode educational podcast titled "Women & War: A Feminist Podcast" in July 2022. Speaking after this podcast series, which aimed at making feminist research accessible and successfully attracted thousands of listeners from around the world, Dr Dirik said she planned to relaunch and grow it with new episodes in the future.

To read more about Dr Dirik's work, see page 30 of LMH News 2023.



Encouraging Music at LMH

In last year's Philanthropy Report, we shared news of our new Live Rehearsal Room and Recording Studio at LMH, generously funded by donations from alumni Julian Nott (1980, PPE) and Simon Pennock (1979, Physics).

During the summer, the top floor of Kathleen Lea has been transformed into a fully-equipped and sound-proofed recording studio with a full drum kit.

The concept was developed by three undergraduates, Aris Sabetai (2021, Music), Francesco Reni (2019, Classics and Oriental Studies) and Anastazie Towers (2021, Mathematics and Computer Science). Noting a lack of resources for music practice and recording across the university, the students approached the College with a proposal to create a couple of sound-proofed spaces in LMH where they and others could practice their music. Impressed with the idea, the Domestic Bursar worked with students to expand the proposal into a fully-budgeted music studio and live room, identifying what it would take to turn the idea into a reality.

Aris says: "Numerous bands and musicians have kickstarted their careers with like-minded musicians at college or university, whether it be setting up a string quartet, a band or experimental recording project. I hope that our contribution to establishing a recording studio and live practice room in LMH will not only expand the musical culture of the College, but also encourage prospective students with interests in modern music to apply here."

At the time of writing, Aris has just released his debut single, 'Pariahs', performed under the stage name Mount St. Helen. It is available to stream on Spotify, and you can watch the video on YouTube. You can follow Mount St. Helen on Instagram @mount.st.helen.



“Even though the College has acquired a couple of good quality grand pianos in recent years we have continued to lack a suitable dedicated space for music practice, and have had no facilities at all for recording music or any other digital audio work. For this reason, I was delighted to have a visit from undergraduates Aris, Francesco and Anastazie bringing with them an extremely rare phenomena – a solution rather than a problem! Their proposal to turn the two rooms at the top of the Kathleen Lea building into a dedicated practice and recording space was welcome – hopefully updating the rooms for the 21st century. It took a while to complete the research and design, and secure funding to turn their idea into a deliverable project; soundproofing the main rehearsal space by effectively building a room within a room was quite a feat! Once the basic space was there the student team took over, designing, building and connecting up a straightforward but good quality and effective studio for composition and recording.

The project has been fun to work on and the team's enthusiasm has been inspiring. The result is excellent – a really usable facility in the heart of the College that can be made available to keen musicians and will be a very attractive feature for future students. Our thanks to the donors for making these works possible. ”

Bart Ashton, Domestic Bursar





Life as a Ukrainian Graduate Scholar

My name is Kseniia, and I come from Kyiv, Ukraine. As a recipient of the LMH Ukrainian Graduate Scholarship, my journey here holds profound significance.

With an extensive background in both private and NGO sectors, I've always been driven by a desire to serve as a public policy changemaker. This led me to advocate for legislative change, working to better the investment climate in Ukraine. These efforts aimed to eliminate obstacles hindering businesses in Ukraine and were not mere tasks; they were initiatives that led to tangible, positive transformations.

I am committed to engaging in the reconstruction of post-war Ukraine and contributing to building a better future. Pursuing a Master of Public Policy at the Blavatnik School of Government is the perfect match for these aspirations, allowing me to gain the knowledge and skills needed to make a lasting impact.

Lady Margaret Hall's rich history and its dedication to creating positive change resonate deeply with me. Here, I find not only an environment of intellectual rigor but also a community that shares my commitment to effecting real-world change.

However, this journey wouldn't have been possible without the generous support of donors. It goes beyond academia; it's about securing a safer place for my little daughter in these tumultuous times our country faces. This support empowers me to pursue my studies with dedication and focus.

In addition to my academic work, I eagerly anticipate involvement in various extracurricular activities within Lady Margaret Hall. The vibrant community here offers a plethora of opportunities to engage with fellow scholars and contribute to the College's dynamic atmosphere.

Whether it's attending lectures, participating in discussions, or collaborating on projects, I'm excited to be an active member of this intellectually stimulating environment.

As the newly elected Secretariat of the Oxford University Ukrainian Society, we have ambitious plans for the year, including events and initiatives aimed at fostering a deeper understanding of Ukraine, its rich cultural heritage, and resilient, determined spirit. I'm currently working alongside my Ukrainian peers on an event, "Discovering Ukraine: A Journey through History, Culture & Comedy", a platform to showcase the multifaceted beauty of our nation.

This journey is deeply personal for me. Ukraine and its people are enduring significant challenges, and I am wholeheartedly dedicated to doing my part in shaping a brighter, more prosperous future. Ukrainians are fighting for freedom and democratic values, and we are immensely thankful for the invaluable support from the international community.

Kseniia Velychko (2023, Master of Public Policy), 2023-24 recipient of the LMH Ukrainian Graduate Scholarship

October 2023

With thanks to all the donors who enabled LMH to welcome Kseniia as our second Ukrainian Graduate scholar.

Investigating Urban Space

Baruch Gilinsky (2022, DPhil History) is the 2022-23 recipient of the Frances Lannon Graduate Scholarship in History. Growing up in North London, his academic interests and curiosities were piqued at a young age by regular trips to free museums in Central London.

As a child growing up in London, outings to the Natural History Museum, the Science Museum, and the Victoria and Albert Museum, all helped stimulate my sense of wonder at the broader world of knowledge that lay beyond the strict confines of the primary school curriculum. Today, my research continues to bring different areas and themes together, trying to understand how the urban and the rural intersect and interact, and indeed, how cities use space and the natural and built environments.

My research is focused on the city of San Francisco in the mid to late 19th century, and the use of urban space within the city. How was urban space used? Which groups within urban society clamoured for new types of urban spaces? Who stood against them? What sort of city emerged by the end of period, and what does the use of space tell us about this city? These questions lead me to consider more broadly how the city responded to disasters, with San Francisco being levelled by two major fires, one in 1851 and another in 1906. This brings into my consideration questions around disaster response, as well as the role of capital and industry in contesting and constructing the city.

For the rest of this academic year, I will be working towards Transfer of Status, as well as beginning to plan trips to various archives in the United States during the summer.

Financial support from the College has been invaluable in allowing me to undertake my DPhil – I simply would not have been able to do it otherwise. Beyond allowing me to begin graduate studies, the security of the funding I have received from the College has meant that I can concentrate solely on my studies, without having to take



up other employment, which would be a significant distraction. I plan to continue with academia beyond the few years of my doctorate, although I am also interested in a career in the world of museums and education, hoping to give back to the institutions which nourished my intellectual curiosities.

Baruch Gilinsky (2022, DPhil History), 2022-23 recipient of the Frances Lannon Graduate Scholarship in History

January 2023

A view map of San Francisco, as seen from Nob Hill looking down California Street. Published by Henry Bill for inclusion in the 1856 edition of his *History of the World*.



Oxford Pakistan Programme Scholars 2023/24

The Oxford Pakistan Programme (OPP) is now in its second year supporting graduate awards, with nine of the eleven talented Pakistani-origin graduate scholars based at LMH.

The OPP was founded three years ago by Pakistani academics and alumni of the University of Oxford: Professor Adeel Malik (Global Fellow at the Oxford Department of International Development), Dr Talha Jamal Pirzada (Linacre 2017, DPhil Materials Science) and Mr Haroon Zaman (LMH 2016, Jurisprudence), to generate academic opportunities for talented Pakistani-origin students and to promote closer academic engagement between Oxford and Pakistan. The OPP aims to support individuals who can act as catalysts for positive change, set new standards in ethical leadership, and contribute meaningfully to Pakistan's development.

During its second year, the OPP is supporting scholars from a broad spectrum of academic domains, with subjects including: Mathematics, Education, Development Studies, Climate Change, Music, Chemical Biology, Clinical Epidemiology and Medical Statistics and Computer Science. Through the combined financial support of the OPP and its partners, the OPP's scholars will receive more than £450,000 of scholarship funding this year.

In addition to the new scholars who joined this new academic year, the OPP continues to support two scholars from the inaugural class: Usama Salamat (MSc in Development Studies) and Ajmal Mughal (DPhil in Music).

Alongside its partnership with LMH, the OPP has also received support from: the Malala Fund, Kellogg College, Linacre College, the Blavatnik School of Government, the Commonwealth Scholarship Programme and the High Commission of Pakistan. Through the generosity of individual and institutional donors, the OPP is able to offer a range of scholarships for talented students of Pakistani origin.

Top row L–R: Wajeeha Amir (MSc in Evidence-Based Social Intervention and Policy Evaluation), Amna Baig (Master of Public Policy (MPP)), Abraham Shah (Master of Public Policy (MPP))

Middle row L–R: Ahmed Salman (DPhil in Cybersecurity), Rabia Ali Khan (DPhil in Oncology), Ahsan Mashhood (MSc in Evidence-Based Social Intervention and Policy Evaluation)

Bottom row L–R: Jabir Ali (DPhil in Antimicrobial Resistance), Usama Salamat (MSc in Development Studies), Ajmal Mughal (DPhil in Music)

When announcing this year's awards, the OPP's co-founders thanked the myriad of supporters of the OPP's graduate scholarship programme who, through their generous donations, have afforded a life-changing opportunity to talented young Pakistani-origin students. Commenting on the significance of the scheme, the co-founders highlighted the need to support the aspirations of Pakistani youth who feel growingly marginalised due to a lack of opportunities and coherent long-term policies in Pakistan. They also emphasised the importance of investing in the aspirations of the British Pakistani community, which remains underrepresented and socioeconomically deprived.

More information about the OPP and its links to LMH can be found at: www.lmh.ox.ac.uk/oxford-pakistan-programme





Developing our Community

The Jewel in our crown: plans for the College Gardens

Over the course of the last 18 months, the College has been working on plans to restore and enhance the beauty of our Gardens. We have been extremely fortunate to have been given some £50,000 from a small number of donors whose generosity and interest has enabled us to get the process underway.

Using plans drawn up by landscape architects Colvin and Moggridge and other tools and knowledge available to us, groups of staff, fellows, students and alumni have considered carefully how to proceed. Of significant relevance to our planning is LMH's upcoming 150th Anniversary, which will be marked during 2028 and 2029. An important element of the celebrations will be showing our appreciation for our beautiful College, its gardens and welcoming back as many alumni and friends as we can during this exciting time.

LMH has a strong identity, borne from our history and expressed through our fine and varied architecture. This identity should be reflected and augmented by our gardens. We have a rare opportunity to create a garden that is unique with historical and botanical interest that reflects our 'pioneering' academic and educational prowess and commitment to developing the sustainability and biodiversity of our green spaces. The approaching 150th Anniversary gives us a strong rationale for doing this, as well as a clear timeline. Our new Head Gardener, Oakley Loudon (promoted following Kate Hunt's departure in the early summer), is full of ideas to make the Gardens the pride of the College (and Oxford!). His knowledge, energy and enthusiasm are palpable.



With the Anniversary now four and a half years away, our main focus will be on restoring the glory of our borders. Work to bring these borders to their full potential needs to begin now to ensure that plants and shrubs are sufficiently established to showcase LMH at its best in 2028/29. The Garden Team have been consulting with plant buyer Paul Barney (of Edulis Nurseries), who has won awards for his work and selections of plants at RHS and Chelsea flower shows and featured in magazines such as 'Garden's Illustrated'. With Paul's assistance, we have identified 'priority areas' to update and develop the garden. We plan to realign planting to the architecture and character of LMH. A 'plant palette' has been proposed to ensure year-round interest and complimentary colour reflecting the spaces in which the borders are situated.

The Garden Team have already cleared the overgrown borders in Wolfson to open up the quadrangle, and sharpened up the topiary and simplified the landscaping in the lawn behind the bar. Drawings and the plant palette are being finalised and we expect to begin the next phase of work in early 2024. We look forward to sharing more detail soon and hope you will enjoy watching the transformations as they happen. Please come and visit to see these in person.

If you would like to learn more about the plans we have for the Gardens or make a gift in support of this exciting project, please contact Carrie Scott, Deputy Development Director: carrie.scott@lmh.ox.ac.uk; +44 (0)1865 274362.



Decarbonising Eleanor Lodge

In 2022 LMH received a grant of £1.2m from the government through their SALIX funding mechanism, to help decarbonise our Eleanor Lodge building.

The Eleanor Lodge project, detailed with support from architects and consultants, involved replacing the glass in the original sash windows with high performing vacuum double glazing made in Europe and replacing the old gas boilers with new air source heat pumps situated on the roof of the building. The project took place during a very volatile time for the construction industry in 2022, so its completion was staggered between December 2022 and May 2023.

It is entirely by design, but there isn't much to see! Eleanor Lodge is a Grade II listed building and the LMH site sits within a conservation area. The local planning authority were very pleased with the concept and execution of the glazing: the original frames were retained and, although you can tell the difference in the glass if you look very carefully, most people don't notice it at all – even from inside the rooms. The difference in heat loss is marked, as are (incidentally) the acoustic properties; the heat-demand for the building is significantly lower than

previously, and the comfort of the rooms much greater. The heat pumps themselves are positioned in a valley in the roof, invisible from the ground.

As a result of the construction delays, the heating and hot water system was only fitted as the weather got warmer, but it has been in operation since the start of Michaelmas and is heating the building effectively and efficiently. Three large Mitsubishi heat pumps are driving the heat generation: they use CO₂ as a refrigerant so that heating flow temperatures can be relatively high, meaning that the existing radiators and pipework did not need changing – saving resources, time and money. True to LMH's pioneering traditions, the design of this system is innovative, trialling a couple of techniques to maximise the efficiency of the set-up as well as just reducing the carbon emissions per se. We're continuing to work with our design consultants, Max Fordham LLP, to monitor the effectiveness of these designs over the winter.

We'll know more when spring returns and we can take measurements, but the project is estimated to save nearly 1,000,000 kwh of energy from fossil fuel burning, which equates to avoiding 200 tonnes in CO₂e emissions.

Bart Ashton, Domestic Bursar

November 2023

Green Giving Day

On 13th and 14th November, we held our first ever Giving Day with a focus on sustainability. Thank you to everyone who took part!

At LMH, when thinking about sustainability, we consider the beautiful and important space we reside in as well as our wide-ranging operational activities: the biodiversity of our gardens and the wildlife we share them with; how we heat and power our buildings, investing in the facilities now with the future in mind; carefully sourcing our food, being mindful of what we eat and how much we throw away; how we deal with our waste so we can minimize harmful emissions. It is also about how we work with our soil and recognizing it's a really special resource, and how we plan our future planting in a changing climate. Most importantly, however, it's about educating the next generation of policy makers, teachers, scientists and engineers, empowering them with the skills and knowledge to lead efforts for our planet's recovery.



We are pleased to announce that by 9pm on 14th November we had raised nearly £50,000 for sustainability projects at LMH, including matched funding from a generous donor. More gifts have continued to come in after the event, adding to its success. 147 people, including alumni, staff and current students, made a gift on the day. We shared short videos featuring current LMH students and staff, who talked about the central role that sustainability plays in many of our activities here in College and how support from alumni and donors can help us achieve our future goals.

The new Sustainability Fund will contribute to a range of exciting projects at LMH, such as:

- **The further decarbonisation of our student accommodation**
- **Measuring and improving the biodiversity of our Gardens**
- **Initiatives for students to gain practical skills and knowledge about the climate crisis to take into their careers**

The Giving Day was a brand new way of fundraising for LMH, and we are very grateful for the enthusiasm and well-wishes of our alumni, students and staff. We hope that you enjoyed the day as much as we did. All of the videos and posts from the day can be found on our social media pages for anyone who wishes to find out more.

What is a Giving Day?

A Giving Day is a dedicated online fundraising event, supported by emails and social media, to bring together a community in celebration and support for a shared passion.





Oakley Loudon, Jenny Rose Head Gardener:

“LMH and its gardens are unique within Oxford. The wildlife and natural river landscape is utterly wonderful, and it’s heaving with life; everything from badgers, foxes, muntjac, otters, kingfishers, so many little birds. As a team, we look after this place with such a delicate touch and are looking carefully at everything we do. To work in a nature-friendly way, you have to have an entirely different touch and need to be more conscious, consider what you’re doing and the impact of it.”

Harrison Carter, DPhil candidate in Biology:

“I’m involved with WildCRU (Wildlife Conservation Research Unit) – we try and make impactful science to improve our coexistence with wildlife: humans and wildlife living together in these areas, not excluding one from the other; finding value from synergy and cohabitation. We’re working on the future we want to create, but there’s a bit of a gap between where we are and where we want to be and that is, of course, funding. If you believe that the work we do here at LMH is important, supporting LMH’s Green Giving Day is a wonderful way to put your personal passion into the way the College thinks, the way the University thinks, and hopefully the way that our world will be going forward.”

Eleanor Chamings-Manley, Head of Access and Admissions Support:

“I’ve got a personal interest and commitment to environmental sustainability, but I also know that it means a lot to our prospective applicants. Some students have told us they applied to LMH because of our commitment to environmental sustainability, and I really want for this to be more than words. We are committed and need that to be backed up by our actions.”

To read more about how we are improving sustainability at LMH, see page 21 about the decarbonisation of Eleanor Lodge.

Academic Wellness: Holistic support at the heart of an LMH education

Following their gifts towards the endowment of our Academic Wellness programme, formerly known as Study Skills, we asked two alumnae what it was about this particular LMH programme that inspired them to make a difference.



Jenny Oughourlian

Jenny Oughourlian (Banks, Modern Languages) and **Temple Perham Schauble** (Perham, Literae Humaniores), who both matriculated in 1988, have a shared desire to make an impact at the very roots of students' learning. They also share LMH's wish to embed a truly holistic student support programme across all aspects of College life. Reflecting on their own LMH days, Temple and Jenny consider, with the benefit of hindsight and life experience, why giving to academic wellness is so important to them, and speaks to their philanthropic values.

Q: What was the catalyst to support academic wellness at LMH?

Jenny:

"My husband Joseph and I were keen to support a programme that would benefit all LMH students, regardless of their backgrounds and the level of support they may have received in school. We were also full of admiration for the remarkable and pioneering



Temple Perham Schauble

work of Dr Margaret Coombe in her creation of the Oxford Study Skills Centre and excited to see that LMH, following on from the launch of the Foundation Year, was once again at the forefront of innovation, a leader for transformative change.

Going from A-Levels to a Modern Languages degree at Oxford was a huge leap. After spending two years working on a Moliere play, a 19th century French novel and some romantic poetry in school, studying an author per week at LMH, culminating in a tutorial with one of the world's top academics, was extremely daunting. I can appreciate how learning to articulate views concisely, structure an essay coherently and manage time effectively helps students reach their full potential and thrive in the intense Oxford environment."

Temple:

"I have been supporting LMH for some time and developed a good relationship with Anna Bates (now LMH's Director of Development), who regularly sent me

updates on what was happening at the College. I live in the States, but she brought the work of the College to life and explained some of the transformative work that was happening.

I was intrigued to hear about the work of the Foundation Year, the Study Skills Centre and the Academic Wellness programme, all of which were the first of their kind at the University. In learning more about them, I was proud that these innovative initiatives were being led by LMH, and of how the College was attempting to improve the student experience. I was specifically interested in the Academic Wellness programme as this is an area of particular interest to me: I own a yoga studio and have worked in wellness for many years – the idea of helping students to find balance in their approach to their work and focus on their well-being while at Oxford felt very important to me.”

Q: Would you have benefitted from the Academic Wellness programme when you were a student?

Jenny:

“Most certainly. This support may have meant fewer essay crises and late nights in the library, and could possibly have freed up more time to take advantage of the myriad of extra-curricular activities on offer. It would have been a tremendous opportunity for personal growth and the acquisition of tools instrumental to life in Oxford and beyond.”

Temple:

“I’m sure I would. I think the skills that students are being taught are critical to success both on a personal and academic level; that’s a large part of why I wanted to support this initiative. Although I came to Oxford from a

Study Skills Lecturer Dr Ed Sutcliffe says of the programme:

“It is really exciting to be a part of the pioneering work LMH is doing to support academic wellness. My role is varied, but always enjoyable, and it is a privilege to work with students as they reflect on the skills that underpin their academic success. This is a rewarding role, as it helps students to thrive in their studies, build a lasting set of skills, and make the most of everything Oxford has to offer. It is also inspiring to see how the wider LMH community has supported this important work. The endowment of this programme secures the future of these roles and ensures that we have the capacity to continue offering our services to each and every LMH student, regardless of their background and without the need for third-party referrals.”

“This is an amazing resource to have and I am so glad to be at a college with easy access to study skills support. It has helped my academic work and my mental health.”

Feedback from a current LMH student

private girls’ school and arguably with a lot of preparation for the curriculum, I struggled with the very different discipline of independent study. As a Classics student at school, I was used to working in a classroom with a lot of support. However, at university I only had one or two tutorials a week along with lectures... it was a big change and nobody prepared me for managing my time and how to study most effectively. Also, I wasn’t aware of the importance of looking after my physical and emotional health.”

Q: What do you think is the main difference between student experience at LMH today and your time here?

Jenny:

“This recognition of the need for additional academic support, the importance of mental health and the understanding of the benefits of this support, both in terms of academic success and personal development, were not particularly prevalent during my time at LMH. There wasn’t an obvious place to go for help for those who were brave enough to ask.”

Temple:

“On visiting the College this summer, I was able to hear first-hand from the team running the Wellness programme and was amazed by the support and infrastructure that exists for students now. I’m delighted that this is available for everyone and believe the benefits will be felt by both tutors and students. In addition, I think it will help to alleviate pressure on the College support system, which has been tested through Covid, as students’ mental health will also be more resilient as a result of this work.”

Q: What would you like to see come out of the Academic Wellness programme? How do you think it can change things for students?

Jenny:

“These soft skills are probably some of the most valuable we can learn at university, making the difference between the frustration of struggling to achieve our best and the satisfaction of having the academic confidence to excel and enjoy a more fulfilling university experience. I believe that this potential to increase a young person’s self-confidence through academic wellness support is vital for study, career success and the accomplishment of projects.”

Temple:

"This programme makes it much less intimidating for someone coming from a school which doesn't offer support for Oxbridge entrance, knowing that they will be able to get the support they need once at the College. My hope is that students from all walks of life will feel that they can go to LMH and find the resources and help they need throughout their three or four-year experience."

Q: Why is philanthropy important to you? What does it mean for you to give to LMH?

Jenny:

"I feel extremely fortunate to have studied at LMH. Coming from a sixth form college on the outskirts of Manchester, like many others I arrived at LMH with imposter syndrome. There is no doubt that having studied at Oxford has had a very positive influence on my life through my career and voluntary activities in France, the US and here in the UK. Once my husband and I had reached a certain point in our careers we started to give back where possible, trying to support educational institutions offering exceptional and life-changing opportunities to young people. Having a personal connection with our giving is of course compelling. The first time we gave to LMH was to support the completion of the French fellowship. As a linguist I felt it was crucial to assure the longevity of French teaching at LMH. More recently, it has been inspiring to support LMH as a leader in cultivating intellectual talent, regardless of background, through its transformative academic wellness initiative."

Temple:

"My husband and I believe in philanthropy as a tool for empowerment, as a way of helping people to thrive. When we learned more about the Wellness Programme, it felt like a unique and innovative approach that we wanted to support because it would help students both during their years at college, but also for the rest of their lives. I am also happy to see how much LMH is leading the way in these initiatives at Oxford and that this work is already encouraging similar programming to be adopted across the University. My hope is that over the coming years students will have an even better educational experience as a result of the work that is taking place at the College today."

"I'm honestly not sure I'd be walking into my final ever exam tomorrow without the study skills support I've had. And [the Study Skills team are] so lovely which makes it much easier to ask for help."

Feedback from a current LMH student

Academic Wellness at a Glance



Two full-time Study Skills Lecturers covering Humanities, Social Sciences, Mathematical, Physical and Life Sciences, and Medical Sciences

.....

In the last academic year:



Just under 200 hours of one-to-one student meetings



One-to-one support for 97 different LMH students



Over 40 hours of workshops, seminars, talks, and writing sessions

.....



Working with students at all levels: foundation year, all stages of UG study, visiting students, and postgraduates including DPhil students

From the Heads of Wellbeing

This year has seen significant developments in our approach to student wellbeing at LMH.

Since joining us as Head of Wellbeing in September 2022, Dr Nicole Jones has developed our support offering, focusing on two key objectives: to provide timely and effective support to students experiencing difficulties, and to develop a holistic, proactive approach to wellbeing.

Central to the wellbeing approach at LMH is one-on-one student support. Throughout the past year, this has manifested in various forms – from one-off conversations addressing specific concerns to ongoing support for students facing more profound difficulties. Collaboration between our wellbeing team and their academic colleagues is essential, and feedback from Tutors underscores the importance of dedicated wellbeing support. Thanks to this provision, our academic staff are able to concentrate on their core teaching responsibilities, secure in the knowledge that their students' emotional and psychological needs are being supported. Likewise, students report feeling more comfortable accessing confidential wellbeing support that is completely separate to their academic life.

In line with the second objective, the provision of wellbeing-related activities has increased throughout the last academic year, with wellbeing weeks becoming

wellbeing fortnights, providing a range of activities and events related to mental health, physical health and general wellbeing. Weekly newsletters have increased the profile of wellbeing, and articles on key topics provide evidence-based tips and strategies to encourage self-help and shared accountability.

Lizzie Shine joined LMH as Co-Head of Wellbeing in July 2023, meaning that wellbeing support is now available for students throughout the week. Lizzie's background is as a social worker and she brings complimentary skills and knowledge to Nicole's clinical psychology experience.

The creation and recent expansion of the Head of Wellbeing role at LMH, only made possible thanks to generous donations from our supporters, has not only increased the support available but has also created a more integrated, holistic approach to student wellbeing. Dedicated Study Skills support, designed to promote academic wellness, comes under the remit of wellbeing for 2023/24 and forms a key part of the support now being offered, highlighting the College's core belief that having sufficient support in place is vital to enable every student to reach their potential. Lizzie and Nicole are committed to ensuring that every student receives the support and care that they need in order to thrive during their time at LMH.

Dr Nicole Jones and Lizzie Shine, Heads of Wellbeing



Dr Nicole Jones (left) and Lizzie Shine

LMH Foundation Year – final students graduate

This year marked a significant milestone in LMH's history: the graduation of the final LMH Foundation Year cohort.

On 17th June 2023, our final two LMH Foundation Year students celebrated their achievements at a special event hosted by the Principal. They were joined by former Principal Alan Rusbridger, whose vision it was to establish this programme, founding Course Co-Ordinator Dr Jo Begbie and by 15 former Foundation Year students. Their LMH journey continues as they have now matriculated as LMH English undergraduates.

Thanks to support from donors, the LMH Foundation Year has transformed the lives of more than 60 students since it began in 2017. By opening our doors to those for whom an Oxford education may not have otherwise been possible, we have not only impacted the individual

lives of those participating but also strengthened our rich and diverse community. That our course has been the inspiration for both Cambridge and Oxford to develop university wide programmes is a proud accomplishment for our College, and one which serves to reinforce the pioneering spirit that LMH has long been known for.

Over the last seven years 328 alumni, staff, fellows and friends of LMH helped us to raise the £1.58m necessary to make the vision a reality. Thank you again to our alumni and friends for the part you played in bringing this programme to fruition, contributing to a fundamental shift in Oxford's outreach activity.

In October this year, Oxford's Astrophoria Foundation Year welcomed its first students. There were 553 UK applications for the 35 places available. Students are studying one of four foundation courses; Humanities (Classics, History, English and Theology); Chemistry, Engineering and Materials Science; Philosophy, Politics and Economics; or Law. Astrophoria students are living and studying at LMH and nine other participating colleges: Exeter, Jesus, Keble, Mansfield, Somerville, St Anne's, St Hugh's, Trinity, and Wadham. As at LMH, they receive free tuition and accommodation, as well as a non-repayable bursary to cover living costs.

Whilst we have achieved the original goal of demonstrating the transformational impact a Foundation Year can have and inspiring the wider University to expand the programme, our commitment to educational mobility does not end here. We are delighted to have recently welcomed our new Head of Access and Admissions (see page 29) to integrate our outreach and admissions work and ensure we are using our learnings from the Foundation Year to find the brightest students to study at LMH, regardless of background.

Thank you once again for joining us on this transformational journey.



Evolving Outreach

Eleanor Chamings-Manley's role as Head of Access and Admissions Support is a new one to the College and represents a key step in further developing our undergraduate outreach. Here, Eleanor gives an insight into what the future holds for LMH's successful outreach programme.



I oversee the College's outreach activity with schools with our long-standing Outreach Manager, Marrium Khan (2010, English). Together, Marrium and I are developing ambitious outreach programmes to reach groups currently underrepresented at Oxford. We communicate proudly that LMH is open to students of all backgrounds with the potential to excel.

In addition to my outreach work, I also look after our undergraduate admissions processes, with a particular responsibility for consolidating our understanding of how to contextualise high academic potential with educational background.

My interest in widening outreach access and fair admissions is both professional and personal. I joined LMH from University College (Oxford), where I delivered their schools' outreach programmes for six years and managed the undergraduate admissions process for

two years. In 2020, I completed a Master's degree at UCL in Education and Social Justice, where I considered Access to Higher Education. My research dissertation focussed on the role of academic transition support programmes in helping students from less advantaged backgrounds access highly selective universities. Prior to my professional career, I read English at St Hilda's. I originally come from North Devon and attended a school where it was rare to progress to Oxford – in fact Oxford outreach was fundamental in my own decision to apply.

As a community LMH has shown that, when it strongly believes in a cause, it has the determination to put resource and energy into making a real difference. The Foundation Year has given us unique expertise in identifying, communicating with and supporting the educational success of students from groups that Oxford has typically found it hard to reach. It has taught us that it takes sustained activity, starting much earlier on in students' educational journeys, to increase successful applications from underrepresented groups to Oxford. It is also important to work closely with our students from non-traditional backgrounds throughout their time on degree programmes to inform our future outreach strategies.

My team and I are building upon this understanding to take the College's outreach work in new directions. We are particularly keen to explore how we can use digital platforms and online media to extend the reach of our outreach work with groups which, for example, due to geographical distance or the impact of the rising cost of living, are less able to engage with more traditional schools' outreach.

Core to our future plans is the robust evaluation of our outreach programmes. This will ensure that we not only impact individuals' lives but also contribute to the research evidence for higher education outreach more widely and maintain LMH's position as a one of the most engaged colleges of the University in terms of best practice in outreach and admissions.

Eleanor Chamings-Manley, Head of Access and Admissions Support



Spotlight: Alumni Volunteering

We are very fortunate to have a longstanding tradition of alumni and friends who volunteer their time to support LMH. Working alongside staff, our volunteers have given their expertise, experience and many hours of their time to advance a broad range of projects encompassing fundraising and alumni engagement activities.

A History

The origins of the **Lady Margaret Hall Association (LMHA)** lie with the publication of a small volume with a dark brown cover in 1892. This publication contained a report of a meeting in 1891 at which 'it was resolved to form an Association of Old Students to help keep up the feeling of comradeship among students after they had left the Hall'. It is thanks to the hard work of several generations who formed and sustained an alumni community through this Association, that we have such an embedded programme of engagement at LMH. After the establishment of the Development Office in 1997, the work of the LMHA dovetailed with the Office and focused on complementary activities such as producing *The Brown Book*, launching the LMH Oral History Project and assisting with events.

The **Advisory Council** was set up in 2005 to advise on both strategic and fundraising matters. Major projects have included the relocation of the Law Library, the New

Era Campaign, the Foundation Year and the revised welfare framework. Whilst the Council was established by former Principal Frances Lannon, subsequent Principals have continued to seek the advice of alumni both through the formal structure of the Advisory Council and on an individual basis.

After consideration of the evolving needs of the College and our desire to attract and involve a wider range of alumni volunteers worldwide, we have moved away from the two committee structures and adopted a more flexible framework, open to all, through the Alumni Volunteer Network (see below).

We are extremely grateful to everyone who has served on the LMHA and Advisory Council over many years. It has been a joy and privilege for Development Team members to have had the opportunity to work with and get to know them; thank you to everyone for their contributions to the College, professionally and personally. We very much hope they will continue to take part in our next chapter

Looking forward

Between June 2028 and December 2029 LMH will celebrate its **150th Anniversary**. As this milestone comes into view, representing a significant moment in

LMH's history, and at a time of ever greater financial pressure, we wish to open up further opportunities for our alumni body to lend their skills, expertise and passion as volunteers for the College. Alumni contribution to our projects will enhance our alumni engagement and fundraising activities, allowing us to expand our network of supporters, reach more deeply into the alumni community and involve a range of alumni who best represent this special College. With this in mind, we are establishing an **Alumni Volunteer Network** to support the Development Team and wider College community in achieving our goals, with the flexibility to add new opportunities as needs arise. As lifelong members of the LMH community we hope alumni will take advantage of new opportunities to deepen your association with the College.

Volunteer Network projects are already underway. *The Brown Book*, a well-established and important annual

publication continues to be produced by alumni for alumni. The members of **The Brown Book editorial committee** are part of our Volunteer Network. Launched in 2019, the **LMH Oral History Project**, also led and run by alumni, is currently our largest Volunteer Network project. At the time of writing there are a dozen or so alumni supporting this project, interviewing others in our community as part of our anniversary preparations. Furthermore, small groups of alumni in several cities around the world have formed **LMH Local** groups, putting on events for other LMHers in their region. We are so grateful to all our volunteers and welcome others who may be interested in joining these ventures. Please contact the Development Team to find out more and keep an eye on our communications for additional opportunities as they arise.

In recognition of our volunteers, we are delighted to list everyone here who has supported LMH in the last year.

Thank you to the LMHA

Carolyn Carr (Jones) 1977
Joanna Crispin (Godfrey) 2003
Judith Garner 1977
Alison Gomm 1974
Harriet Kemp 1979
Emma Neale (Ahmad) 1994
Bobby Seagull 2003
Sophie Stead (Harris) 2007
Grant Tapsell 1995 (F)

Thank you to our Advisory Council

Jennifer Oughourlian (Banks) 1988, Chair
Neil Simpkins 1984, North American Chair (FF)
Hazel Archer Sanger (Archer) 1959
Mark Beer 1990
Jenny Carey (Dodge) 1981
Blair Crawford 1982
Dame Vivien Duffield (Clore) 1963 (HF, FF)
Amanda Foreman 1991
Dame Nerys Jefford 1981
Harriet Kemp 1979
Dame Judith Macgregor (Brown) 1971 (HF)
Joanna Motion (Powell) 1970
Jackie Perry 1970
Diana Quick (Cranham) 1964
Suzelle Smith (Moss) 1975 (VF)
Xavier Van Hove 1994
James Williams 1984

Thank you to the Alumni Volunteer Network

The Brown Book Committee

Carolyn Carr (Jones) 1977
Judith Garner 1977
Alison Gomm 1974

LMH Oral History Project

Helen Barr (Chignell) 1979
Cindy Bull (Harrison) 1979
Nicky Bull (Harper) 1972
Georgina Ferry 1973
Alison Gomm 1974
Judy Hague 1974
Harriet Kemp 1979
Judith Macgregor (Brown) 1971
Linda Muirhead (Johnson) 1973
Sheelagh Neuling 1967
Sheila Peskett 1963
Roger Ramsden 1979
Sue Taylor 1969
Elisabeth Tooms 1973
Alice Wakefield Ward (Wakefield) 1962

LMH Local groups

Hong Kong
Julian Cohen 1985
Boon Kwan 1996
Arthur Law 2007

New York
Sohaib Naim 2009
Anna Sullivan 1995

Singapore
Jin Cheong 2000
Mimi Somjee (Jumabhoy) 1972
Neil Tottman 1983

My LMH Story

“ My name is Jewel Bennett. I am a 4th year medicine undergraduate from Cheshire who matriculated in 2019. I first visited Lady Margaret Hall during an Open Day the summer before applying. Though I was captivated by its beautiful gardens, what really stood out to me was its close-knit community. The college seemed friendly and supportive, not only embracing me, but my parents and four siblings into their community. Being a Soprano Choral Scholar, my family have watched me perform for the college on numerous occasions.

Growing up I enjoyed challenging myself in education; I took my Maths GCSE a year early and sat additional AS-level examinations. Having decided to pursue medicine, I studied A-level Chemistry, Biology, Maths and Physics and achieved 4 A*s. Throughout school I also enjoyed public speaking at Model United Nations and Rotary Youth Speaks conferences and played at county-level or higher in 5 sports.

I greatly enjoyed my pre-clinical years and chose specialist modules in cardiology and cellular neuroscience. During third year, I joined a research group at the John Radcliffe hospital and aided the creation of an AI programme for the NHS that uses radiomic extraction of adipose tissue inflammation on CT scans to quantify an individual's risk of developing cardiovascular disease or diabetes. I was also a student representative on the Primary Care Committee for two years and during the University's Centenary of Women, I was selected for their 100 Women in Medical Sciences campaign as a 'Leader of the Future.'

Over the years, I have represented the University in hockey and athletics, and attended several Christian societies as my faith is the centrepiece of my life and success. Within college I have been on the JCR Executive Committee, Netball Captain, Christian Union Representative and President of 'The Alison Brading Circle' – a gathering of LMH medical students, tutors and associates organising educational talks and social occasions. Having spent multiple years upholding Alison's community-based legacy, it was ever more special to receive the Alison Brading Scholarship for academic excellence.

This award has funded my medical equipment, hospital scrubs, textbooks, and hopefully soon a surgical conference. This has greatly advanced my learning and given me the resources and capacity to give back to the community through conducting tutorials for the first year LMH medics, and mentoring students from disadvantaged backgrounds through the 'STEP into OxMed' programme.

Transitioning into clinical school has been fantastic! In the future, I hope to specialise in either cardiology or ophthalmology, specifically eye surgery. I am currently

on the University's Surgical Teaching Committee to enhance Oxford's surgical curriculum. I also have a growing interest in global health and improving healthcare in countries with accessibility issues e.g. due to war or politico-economic instability. Last year I attended a round-table discussion with the UN Director of the International Crisis Group which solidified my interest in this area.

I am extremely grateful for this funding as it has given me the opportunity to explore so many options. Your donations certainly make a difference! ”

Jewel Bennett
(2019, Medicine)

February 2023





LMH donors recognised by the University

The Chancellor's Court of Benefactors and the Vice-Chancellor's Circle recognise individuals, foundations and organisations who have provided significant and generous support to the collegiate University.

We are immensely proud of the following LMH alumni and friends who have been recognised in this way for their generosity. The information below is correct as of November 2023.

Chancellor's Court of Benefactors

Cathleen Blackburn (O'Mahony) 1978 ■ ■
 Dame Vivien Duffield (Clore) 1963 (HF, FF)
 Donald Fothergill 1980 (FF)
 Nicola Manby (Croome) 1976 ■ ■
 Michael O'Sullivan 1982 (FF) ■
 Neil Simpkins 1984 (FF) ■

Vice-Chancellor's Circle

Diana Allan (Cotton) 1960 ■
 Susan Buckee (O'Flaherty) 1967 and Jim Buckee ■
 Richard Buxton 1982 ■
 Guy Monson 1981 (FF)
 Linda Montgomery (Merrall) 1969 and Alan Montgomery ■
 Jennifer Oughourlian (Banks) 1988 and Joseph Oughourlian ■
 Suzelle Smith (Moss) 1975 (VF) and Don Howarth (VF) ■

■ member of Beaufort Circle (legacy society)	(F) Fellow	(FF) Foundation Fellow
■ member of Souvent me Souviens (loyal donor)	(EF) Emeritus Fellow	(VF) Visiting Fellow
* deceased	(HF) Honorary Fellow	(S) Staff
	(HRF) Honorary Research Fellow	

Major Benefactors

We would like to thank, recognise and honour our major benefactors who, in their lifetime have given most generously to LMH. The information below is correct as of November 2023.

Foundation Fellows

Dame Vivien Duffield (Clare) 1963 (HF)
 Anna McNair Scott (Colquhoun) 1964 ■ ■
 Margaret Coombe (Mallaband) 1971 ■ ■
 Donald Fothergill 1980
 Guy Monson 1981
 Michael O'Sullivan 1982 ■
 Neil Simpkins 1984 ■
 2 Anonymous members

Principal's Circle (£100k+)

Margaret Matthews (Blears) 1950 (EF)
 and Peter Matthews *
 Hazel Archer Sanger (Archer) 1959 ■
 Diana Allan (Cotton) 1960 and
 Richard Allan ■
 Dame Vivien Duffield (Clare) 1963 (HF, FF)
 Ann Hutchison 1963 and
 James Carley (HRF) ■ ■
 Anna McNair Scott (Colquhoun) 1964
 (FF) ■ ■
 Susan Buckee (O'Flaherty) 1967 and
 Jim Buckee ■
 Penny Freer 1967 ■ ■
 Linda Montgomery (Merrall) 1969 and
 Alan Montgomery ■
 Margaret Coombe (Mallaband) 1971 (FF)
 and Christopher Coombe ■ ■
 Valerie Mitchell 1971 ■
 Suzelle Smith (Moss) 1975 (VF) and
 Don Howarth (VF) ■
 Nicola Manby (Croome) 1976 ■ ■
 Stephen Hester 1979 ■ ■
 Donald Fothergill 1980 (FF)
 Jenny Carey (Dodge) 1981 and Gus Carey
 Tom Drury 1981
 Guy Monson 1981 (FF)
 Carol Oster Warriner (Gibson) 1981
 Richard Buxton 1982 ■

Michael O'Sullivan 1982 (FF) ■
 Neil Simpkins 1984 (FF) ■
 Julian Granville 1986 and
 Louisiana Lush 1986 ■
 David Clark 1987 (HRF) and
 Helen Walker 1987
 Jennifer Oughourlian (Banks) 1988 and
 Joseph Oughourlian ■
 Temple Perham Schauble 1988
 Kossen Ho 1995
 Judie Ng 1998 and Rod Shortell
 Mark Hornsey 2007 and
 Laura Hornsey (McDonald) 2008
 Stephen Blyth (Principal)
 Benny Lau
 John Mills ■
 Ockenden International
 5 Anonymous donors

Talbot Circle (£50k–£99,999)

Yoma Ullman (Crosfield) 1955 ■
 Lisa Miller (Davies) 1958 ■ ■
 Diana Guy (Eade) 1962 ■ ■
 Paula Flynn (Field) 1964 ■
 Annette Haworth (Dyer) 1965
 Caroline Lancelyn Green (Bennett) 1965
 and Scirard Lancelyn Green ■
 Faith Boardman (Mills) 1969 ■
 Jane Douglas 1970 ■ ■
 Jane Murphy 1970 ■ ■
 Sue Scott (Dean) 1971 ■
 Nali Dinshaw 1972 ■
 Judith Ingham 1977 ■ ■
 Cathleen Blackburn (O'Mahony) 1978 ■ ■
 Dame Nerys Jefford 1981 ■ ■
 Mark Learmonth 1983
 Doug Shaw 1983 ■
 Neil Tottman 1983
 Simon Bentley 1986

John Graham-Cumming 1986 ■
 Amanda Foreman 1991 and
 Jonathan Barton ■
 Sharon Volckhausen 1992 ■
 Mark Robson (HRF) ■ ■
 Malala Fund
 2 Anonymous donors

Elizabeth Wordsworth Circle (£25k–£49,999)

Doris Drew (Broadfield) 1949
 Jennifer Montagu 1949 (HF) ■
 Rosemary Hewlett (Baker) 1951 and
 Paul Hewlett
 Anne Simor (Crowe) 1958 ■ ■
 Joella Werlin 1959 ■ ■
 Maureen Cruickshank (Ware) 1960 ■
 Veronica Warner (Smith) 1962 ■
 Sue Tyson (Yarker) 1964 and Bill Tyson ■ ■
 Nancy Johnson 1965
 Ann-Margaret Walton (Willis) 1965 and
 John Walton
 Mari Prichard (Pritchard) 1966
 Susannah Ross 1966 ■
 Anne Hardy (Wilkinson) 1972
 Linda Muirhead (Johnson) 1973 and
 Sandy Muirhead ■ ■
 Annie Bentley 1975
 Roger Ramsden 1979 ■
 Geoff Skingsley 1979
 Julian Nott 1980 ■
 Blair Crawford 1982
 Mike Baxter 1985
 Martin Giles 1985
 Nile Lanning 1985 ■
 Annabel Beacham 1987
 Karl Holmes 1991 ■
 Howard Hogan 1992
 Adrian Cloake 1993 and
 Debbie Cloake (Collins) 1994 ■

■ member of Beaufort Circle (legacy society)	(F) Fellow	(FF) Foundation Fellow
■ member of Souvent me Souviens (loyal donor)	(EF) Emeritus Fellow	(VF) Visiting Fellow
* deceased	(HF) Honorary Fellow	(S) Staff
	(HRF) Honorary Research Fellow	

Mark Dwyer 1994 ■
 John Locker 1994 ■
 Tim Williams 1994 and
 Catherine Williams (Elgar) 1995 ■
 Rob Evans and Gail Sinai
 Robert Fielden ■ ■
 Damian Kao
 Jean Lawes
 Yuliana Mihaylova
 2 Anonymous Donors

Jex-Blake Circle

(£10k–£24,999)

Celia Sisam 1944
 Joanna Matthews (Roberts) 1948
 Sheila Innes 1949 ■ ■
 Anne Kaye (Holland) 1951 ■ ■
 Judy Marshall (Sandison) 1952 ■
 Diana Atkinson (Laycock) 1953 ■ ■
 Diana Bayne (Wilde) 1955 and
 Sir Nicholas Bayne
 Sylvia Countess of Limerick (Lush) 1955 ■
 Susan Rose (Latham) 1955 ■ ■
 Dilys Winegrad (Pegler) 1955
 Louise Grattan (Jopling) 1956 and
 Patrick Grattan ■
 Felicity Youard (Morton) 1956 ■
 Joanna Hitchcock (Goodman) 1957 and
 Martyn Hitchcock ■
 Ruth Leslie 1957 ■
 Virginia Makins (Shapiro) 1957 ■
 Patricia Neate (Mulligan) 1957
 Mary Martineau (Haynes) 1958
 Gay Gervin 1959 ■ ■
 Mary Haynes (Lambert) 1959 ■ ■
 Deh-I Hsiung 1959 ■
 Ruth Rothenberg (Portrait) 1959
 Virge James (Taul) 1960 ■ ■
 Jillinda Tiley (Draper) 1960 ■
 Julia Tugendhat (Dobson) 1960 ■
 Gill Perrin (Hughes-Thomas) 1961 and
 Charles Perrin ■
 Mary Jacobus 1962 (HF) ■
 Marion Michell (Cutler) 1962 ■
 Carol Stewart 1962 ■ ■
 Baronness Hogg (Sarah Boyd-Carpenter)
 1964 (HF) ■
 Frances Payne (Harrison) 1964 ■
 Rosalind Jay (Walker) 1965
 Deirdre Fordham 1966 ■ ■
 Mari Prichard 1966
 Susannah Ross 1966 ■
 Susan Buckee 1967 ■
 Penny Fuller 1967 ■ ■
 Sarah Page 1967

Helen Ramsdale 1967 ■ ■
 Margaret Williams (Hillier) 1967 ■
 Jean Cooper 1968
 Dame Elizabeth Slade 1968 (HF) ■ ■
 Elaine Drage (Collier) 1969 ■
 Dame Frances Lannon 1969 (HF) ■ ■
 Ingrid Lawrie (Gilbert) 1969 ■ ■
 Anna Walker (Butterworth) 1969 ■
 Janet Clayton 1970
 Sheila Dunleavy (Squire) 1970 ■
 Pamela Lighthill 1970
 Dame Judith Macgregor (Brown) 1971
 (HF) ■
 Sarah Baxter (Stowell) 1972 ■
 Sian Cheverton (Rees) 1972
 Lucy Barker 1973 ■
 Susie Furnivall (Hamblen) 1973 ■
 Jo Andrews 1974 ■
 Rachel Craig (Salisbury) 1974 ■
 Harriet Mitchison 1974 ■
 Rona Slator 1974 ■
 Frances Thomas (Brown) 1974 ■
 Sarah Wookey 1974 ■
 Suzanne Franks 1975 ■ ■
 Angela Jameson 1976 ■ ■
 Laura Shuttleworth (Honigsberger) 1976
 Liz Tanner 1976 ■
 Ann Handford (Wilson) 1977 ■
 Isabel Hudson (Draper) 1977 ■
 Hunada Nouss 1977 ■ ■
 Louise Nicholson (Green) 1978
 Cindy Bull (Harrison) 1979 ■
 Mark Hanley-Browne 1979 ■ ■
 Mark Hobbs 1979 ■ ■
 Nick Burge 1980
 James Halliwell 1980
 Raina Miles (Horrocks) 1980
 Clare Spacie (Sylvester) 1980 ■ ■
 Andrew Bungard 1981 ■ ■
 Liz Conway 1981 ■
 Mark Gay 1981
 Derek O'Neill 1981 ■
 Guy Browning 1983
 Raymond Chan 1983
 Stephen Edwards 1983 ■
 Catherine Fooks (Taylor) 1983 ■
 John Shipsey 1983 and
 Fiona Shipsey (Russell) 1984 ■
 Andrew Hayes 1984 ■
 Bruce Jenkyn-Jones 1984 ■
 Catherine Lawes 1984
 James Orbell 1984
 Michael Solender 1984
 James Williams 1984
 Ian Laming 1985
 Robert Nashak 1985

Robert Newry 1985
 Sara Bennison 1986 ■
 Forbes Elworthy 1986
 Ian Kirk 1986 ■
 Adam Rubinson 1986
 Hong-I Chen 1987 ■
 Tim Ewington 1987 ■ ■
 Baronness Finn (Simone Kubes) 1987 ■
 Mark Kraiss 1987
 Huw Evans 1990 ■ ■
 Kirsty Hackshall (Searles) 1990 ■
 Blaise Bradley 1992
 James Lindsay 1992 and
 Liz Lindsay (Cooke) 1992 ■
 Shaun McEvoy 1992 ■
 Eloise Walker (Dunn) 1992 ■
 Gemma Allwood (Baggaley) 1994 and
 Richard Allwood 1994 ■
 Xavier Van Hove 1994
 Sam Coulthard 1995 ■
 Grant Tapsell 1995 (F) ■ ■
 Boon Kwan 1996
 Eva Weig (Höhberger) 1996 and
 Florian Weig
 Simon Andrews 1997 ■
 Ghassan Kansou 1997
 Rui Nie 1997
 Evelien Visser 1999 ■
 Bryan Koo 2002 ■
 Michael Shang 2002
 Margaret Coblentz 2003
 Ernesto Feliz 2005
 Ammad Ahmad
 Sheharyar Ali
 Sir David Attenborough ■
 Areeb Azam
 Neil Golding and Salome Michell
 Asad Ghauri
 Isabelle Herring
 Hamid Ismail
 John Kelly
 Sarwar Khawaja
 Nawaz Khokhar
 Donald Koo
 David Law ■
 Sheraz Mehmood
 Clarence Moss
 Penelope Probert Smith (EF) ■
 Conor Quigley (HRF)
 Alan Rusbridger (HF)
 Florence Selman
 Richard Sommers (EF) ■
 Clare Thomas
 Tariq Zaman
 5 Anonymous Donors

The Beaufort Circle

We are incredibly grateful to all alumni and friends who pledge to leave a legacy in support of LMH. The Beaufort Circle recognises those individuals who have chosen to make this most special and personal of donations, in support of the long-term future of LMH.

305 alumni and friends have kindly informed the College of their intention to leave gifts to LMH in their Wills. The following have chosen to be acknowledged as members of the Beaufort Circle and it is our pleasure to recognise them here.

New members of the Beaufort Circle since our last Philanthropy Report are **highlighted in blue**.

Janet Butcher 1942
Renate Barany 1943
Elspeth Wolstencroft 1945
Cathleen Sweet (Vause) 1946
Brigid Wells (Haydon) 1946
Jean Thomson 1947
Anne Wyburd (Ross) 1947
Audrey Colson (Butt) 1948
Jennifer Butterworth (Brown) 1949
Heather Goodare (Young) 1949
Joan Hasler 1949
Sheila Innes 1949
Irina Kirillova (Kirilloff) 1949
Janice Taverne (Hennessey) 1949
Clare Goulder (Gardner) 1950
Marigold Johnson (Hunt) 1950
Anne Kaye (Holland) 1951
Lady Jane Reid (Harwood) 1951
Janet de Gaynesford (Christopher) 1952
Antonia Southern (McAndrew) 1952
Diana Atkinson (Laycock) 1953
Sonia Haslett (Macfarlane) 1953
Eve Barsham 1954
Monnica Hussey 1954
Margaret Knight 1954
Cleodie Mackinnon (Macdonald) 1954
Gill Mallett (Beeson) 1954
Susan Monaghan (Pyke) 1954
Sylvia Countess of Limerick (Lush) 1955
Susan Rose (Latham) 1955
Christine Sutherland (Mason) 1955
Gillian Symons (Horley) 1955
Yoma Ullman (Crosfield) 1955
Delyn Watt (Ingram) 1955
Celia Charrington (Jaques) 1956
Louise Grattan (Jopling) 1956
Anne Seakins (Fazackerley) 1956
Jean Stirling (Marsh) 1956
Gillian Tindall 1956
Prue Fuller (Martin) 1957
Joanna Hitchcock (Goodman) 1957
Susannah McCowan (Harvey) 1957
Sally Sampson (Bentlif) 1957
Diana Brass (Buxton) 1958
Helen Crowe (Dale) 1958
Barbara Doubtfire 1958

Deborah Lavin 1958
Lisa Miller (Davies) 1958
Janet Momsen (Henshall) 1958
Baroness Pauline Neville-Jones 1958 (HF)
Joan Rudd (Bower) 1958
Anne Simor (Crowe) 1958
Susan Treggiari (Franklin) 1958 (HF)
Gay Gervin 1959
Mary Haynes (Lambert) 1959
Catherine Jarman (Warburton) 1959
Liz Rogers 1959
Joella Werlin 1959
Elizabeth Clarke (Ivimy) 1960
Virge James (Taul) 1960
Nancy Lane-Perham 1960
Maggie Pringle 1960
Juliet Rogers (Curtis) 1960
Carola Small (Martin) 1960
Vicky Bocock (Tusa) 1961
Joanna Breyer (Hare) 1961
Mary Gladman 1961
Fenella Heckscher (Greig) 1961
Gill Perrin (Hughes-Thomas) 1961
Jane Foster (Flower) 1962
Diana Guy (Eade) 1962
Everild Haynes (Williams) 1962
Jacqueline Khan (Rutherford) 1962
Carolyn King (West) 1962
Ann Marcus (Edwards) 1962
Penny Neary (Warren) 1962
Hilary Potts (Fish) 1962
Carol Stewart 1962
Delia Burley (Clark) 1963
Catherine Chambers (Simmonds) 1963
Ann Hutchison 1963
Jane O'Rorke (Harding) 1963
Alison Soskice (Black) 1963
Baroness Sarah Hogg (Boyd-Carpenter) 1964 (HF)
Barbara Howden Richards (Shaw) 1964
Anna McNair Scott (Colquhoun) 1964 (FF)
Sue Phillips (Beal) 1964
Mary St Clayre (Greve) 1964
Josephine Townsend (Miller) 1964
Sue Tyson (Yarker) 1964

Wendy Warr (Dobson) 1964
Christine Whittaker Navez (Whittaker) 1964
Margaret Willes 1964
Penelope Clement (Stanley-Baker) 1965
Kathy Ferguson (Jepson) 1965
Dorcas Fowler 1965
Helen Griffiths (Middleton) 1965
Penny Campbell-Adamson (Maitland Culverwell) 1966
Sharon Churcher 1966
Charlotte Clarke (Jenkins) 1966
Jenny Cook (Coombs) 1966
Lavinia Cunningham (Kinchin-Smith) 1966
Jean Dollimore 1966
Deirdre Fordham 1966
Sue Gokgor 1966
Daphne Hampson 1966
Carole McKeown (Hoar) 1966
Elaine Richards Forsyth (Richards) 1966
Margaret Bickford-Smith (Todd) 1967
Elizabeth Dwiar 1967
Penny Fuller (Freer) 1967
Jane Parkin (Witherington) 1967
Helen Ramsdale 1967
Diana Stow 1967
Liz Gibson (Sarson) 1968
Anne Roberts (Conybeare) 1968
Christine Shaw 1968
Dame Elizabeth Slade 1968 (HF)
Sarah Stewart-Brown 1968
Christine Coleman (Abel) 1969
Carole Jackson (Striker) 1969
Dame Frances Lannon 1969 (HF)
Ingrid Lawrie (Gilbert) 1969
Sandra Nicholson (Burman) 1969
Anna Pope 1969
Sue Taylor 1969
Fiona Chesterton (Anderson) 1970
Marion Colledge 1970
Mary Dejevsky (Peake) 1970
Jane Douglas 1970
Sheila Dunleavy (Squire) 1970
Joanna Motion (Powell) 1970
Jane Murphy 1970

If you are considering including a legacy to LMH in your Will, even if you do not wish to be recognised publicly as a member of the Beaufort Circle, do please let us know. Legacy gifts make a tremendous difference for future generations. For more information, or if you have any questions, please e-mail carrie.scott@lmh.ox.ac.uk or call +44(0)1865 274362.

Deborah Sharp 1970
 Judith Simpson 1970
 Jean Sturges (Powell) 1970
Elisabeth Thom (Mardall) 1970
 Ruth Turnbull (Jenkins) 1970
 Margaret Coombe (Mallaband) 1971 (FF)
 Elizabeth Coons 1971
 Penny Duckham 1971
 Joy Hendry 1971
 Valerie Mitchell 1971
 Heather Norman Soderlind (Soderlind) 1971
 Sara Walker 1971
 Susannah Weaver (Steed) 1971
 Nicky Bull (Harper) 1972
 Matilda Cockbain (Ellis) 1972
 Arminel Fennelly (Sebesta) 1972
 Monica Fisher (Pring-Mill) 1972
 Heather Johnston 1972
 Rosalind Marsh (Wells) 1972
 Sue White (Morton) 1972
 Lynette Edwards 1973
 Susie Furnivall (Hamblen) 1973
 Linda Muirhead (Johnson) 1973
 Gianetta Rands 1973
 Janet Smart (Efsthathiou) 1973
 Anne Andrews (Northover)
 Bernice Allman 1974
 Jane Doull 1974
 Alison Gomm 1974
 Judy Hague 1974
 Alison Schroeder (Page) 1974
 Sheila Cater 1975
 Valerie Chamberlain 1975
Carol de Lusignan (Gilchrist) 1975
Suzanne Farr 1975
 Suzanne Franks 1975
 Susan Morris 1975
 Suzelle Smith (Moss) 1975 (VF)
 Jane Anderson (Lambert) 1976
 Kirsteen Donaldson 1976
 Baroness Frances D'Souza (Russell) 1976
 Angela Jameson 1976

Caroline Lumb (Tiddy) 1976
 Nicky Manby (Croome) 1976
 Sheila Markham 1976
 Carolyn Carr (Jones) 1977
 Jill Cook (Goodrum) 1977
 Mary Corran (Waterhouse) 1977
 Anne Fry (MacInnes) 1977
 Jennifer Hayward 1977
 Judith Ingham 1977
 Alison Kenney 1977
 Hunada Nouss 1977
 Susan Roast 1977
 Loraine Watson 1977
 Maria Bentley (Cavanagh) 1978
 Cathleen Blackburn (O'Mahony) 1978
 Caroline Sturge (Brown) 1978
 Peter Bartlett-Ruiz (Bartlett) 1979
 Mark Hanley-Browne 1979
 Stephen Hester 1979
 Mark Hobbs 1979
 Harriet Kemp 1979
 Paula Moon (Rowland) 1979
 Simon Pennock 1979
 Roger Ramsden 1979
 Amanda Taylor (Smith) 1979
 Phil Harrison 1980
 Reem Nouss 1980
 Clare Spacie (Sylvester) 1980
Debbie Thompson (Wilford) 1980
 Peninah Thomson 1980
 Deborah Tompkinson 1980
 Paula Berry 1981
Andrew Bungard 1981
 Patricia Doran 1981
 Dame Nerys Jefford 1981
 Jenny Rowley (Cook) 1981
Peter Tyler 1981
 Richard Buxton 1982
Thomas Clode 1982
 Pamela Nightingale 1982
 Alison Patten-Hall (Pearce) 1983
 Bridget Wilson 1983
 Richard Cairns 1984

Mark Jenkin 1984
 Iain Morley 1984
 Lynda Dennison 1985
 Nicholas Burke 1987
Tim Ewington 1987
 Paul Mukherjee 1987
 Jonathan Rush 1987
 Jamila Fattah 1988
Alex Hildyard 1989
Ross Saunders 1989
 Huw Evans 1990
Richard Lofthouse 1990
Garreth Hayes 1991
 Sharon Volckhausen 1992
 Eloise Walker (Dunn) 1992
Devon Martin (Sargent) 1993
Susie Duffy (Hildyard) 1994
 Grant Tapsell 1995 (F)
 Poppy Adams (Teacher) 1996
 Chris Chapman 1996
Sophie Walker 1998
 Stephanie Langin-Hooper 2003
 Emma Dickson 2007
 Helen Komor 2007
 Jonathan Komor 2007
 Jeremiah Dancy 2008
 Sohaib Naim 2009
 Hannah Spens-Black 2012
 Kameel Premhid 2013
 James Carley (HRF)
 Garry Brown 1967 (EF)
 Allan Doig (EF)
 Sir Brian Fall (HF)
 Robert Fielden
 Christine Gerrard (F)
Ann Kennedy (EF)
 Gillian Peele (EF)
 Penelope Probert Smith (EF)
 Mark Robson (HRF)
 Steven and Cynthia Saboe
 Carrie Scott (Fehr)
 Hilary Warr
 48 Anonymous Donors

The College remembers the generosity of the following alumni and friends from whose estates we received legacy gifts between 1st August 2022 and 31st July 2023.

Cynthia Phillips (Broster) 1937
 Mary Parsons 1940
 Rita Ruhl 1941
 Irene Hindmarsh 1942
 Priscilla Bain (Blunt) 1943
 Margaret Jarvis (Gostelow) 1953

Gill Wilson (Rolls) 1953
 Ann Machin 1959 (Hailes) and Geoff Machin
 Audrey Griffin 1965
 Diana Kahn 1967
 Patrick Wallaert 1992
 Anne Hudson

Souvent me Souviens

We are delighted to recognise those who have made gifts to LMH for at least ten years through membership of the Souvent me Souviens circle. In past editions of this publication we have listed all members in a separate list. It is testament to the great affection that so many hold for LMH that this group has exceeded 685 members. Members are now identified within their matriculation year by a symbol (■). Please note that donors are included if they have made a gift within the last 18 months (from the end of the last financial year, 31 July 2023).

The list below identifies new members of the Souvent me Souviens group since our last publication.

Sally Sampson (Bentlif) 1957
Mary Dicken (Bircham) 1960
Nora Angel (Naisbitt) 1961
Fenella Heckscher (Greig) 1961
Jenny Pedley (Ashby) 1963
Deirdre Fordham 1966
Susan Wollenberg (Bookin) 1966 (EF)
Susan Buckee (O'Flaherty) 1967
Sheelagh Neuling (Alabaster) 1967
Gillian Harvey (Harding) 1970
Valerie Mitchell 1971
Rachel Cadell (Watson) 1973
Linda Muirhead (Johnson) 1973
Victoria Schofield 1974

Sarah Gould 1975
Pauline Millican (Terry) 1976
Alison Kenney 1977
Michael O'Sullivan 1982 (FF)
Clare Smith 1983
Jane Harland 1984
Jane Robertson 1984
Nicholas Burke 1987
Lisa Craig 1987
Jamila Fattah 1988
Nick Baikie 1990
Ned Fenston 1993
Alice Carberry (Percival) 1995
Neil Carberry 1995

Nick Lambert 1997
James Wilton 1999
Christopher Pulman 2001
Victoria Lonsdale 2003
Jeremy Millard 2005
Philip Schroeder 2009
Hannah Spens-Black 2012
Anthony Davison (HRF)
David Law
John Mills
Fiona Spensley (F)
4 Anonymous donors



LMH Roll of Donors

2022/2023

LMH gratefully acknowledges the support of individuals, companies, and foundations and trusts whose gifts have been received in the period from 1st August 2022 to 31st July 2023. Their names appear in the following pages unless they have asked to remain anonymous. If we have made an error, please do let us know.

■ member of Beaufort Circle (legacy society)	(F) Fellow	(FF) Foundation Fellow
■ member of Souvent me Souviens (loyal donor)	(EF) Emeritus Fellow	(VF) Visiting Fellow
	(HF) Honorary Fellow	(S) Staff
* deceased	(HRF) Honorary Research Fellow	

Alumni by matriculation year

1940s

1944

Audrey Hardwick (Marchington) ■
Elaine Miles (Armstrong) ■

1946

Brigid Wells (Haydon) ■ ■
1 Anonymous Donor

1947

Rachel Graham (Norman) *
Anne Wyburd (Ross) ■ ■

1948

Barbara Butler

1949

Jennifer Butterworth (Brown) ■ ■
Heather Goodare (Young) ■ ■
Paulina Hadley (Pepys) *
Sheila Innes ■ ■
Irina Kirillova (Kirilloff) ■ ■
Jennifer Montagu (HF) ■
Rosemary Packard
Jean Spendlove ■
Janice Taverne (Hennessey) ■ ■
Priscilla Tolfree ■

1950s

1950

Margaret Butt (Chaundy) ■
Diana Holman (Hartshorn) *
Joy Holmes ■
3 Anonymous Donors

1951

Barbara Case (Wilson) ■
Sonia Fieldhouse (Browne) ■
Anne Kaye (Holland) ■ ■
Lady Reid (Jane Harwood) ■ ■

1952

Margaret Barker (Henshaw)
Pamela Barnett ■
Judy Marshall (Sandison) ■
Priscilla Oakeshott *
Elizabeth Pierce (Salman) ■
Margaret Stewardson (Bryant) ■
Elizabeth Tonkin ■
2 Anonymous Donors

1953

Diana Atkinson (Laycock) ■ ■
Anne Bell (Durham) *
Sonia Haslett (Macfarlane) ■ ■
Elizabeth Hennessy (Browne)
Bridget Smith (Osborn) ■
1 Anonymous Donor

1954

Eve Barsham ■
Cleodie Mackinnon (Macdonald) ■
Susan Monaghan (Pyke) ■ ■
Jennifer North (Barratt) ■

1955

Diana Bayne (Wilde)
Sarah Child ■
Ann Ferguson ■ ■
Greta Flitcroft (Seckerson) ■
Beryl Morton (Harper) ■
Mavis Page (Jacques) ■
Antonia Pulsford (Mellersh) ■
Susan Rose (Latham) ■ ■
Margaret Sanders (Wild) ■
Christine Sutherland (Mason) ■ ■
Gillian Symons (Horley) ■ ■
Delyn Watt (Ingram) ■ ■
Julie Whelan (Knight) ■
1 Anonymous Donor

1956

Celia Charrington (Jaques) ■ ■
Louise Grattan (Jopling) ■
Anne Smith (Millington) ■
Priscilla Thomas ■
Felicity Youard (Morton) ■

1957

Lucy Archer (Erith) ■

Kate Banister (Bird) ■
 Jenny Bowman (Newall) ■
 Prue Fuller (Martin) ■ ■
 Luisa Gunning (Cross) ■
 Sylvia Harris (Baggs) ■
 Joanna Hitchcock (Goodman) ■ ■
 Ruth Leslie ■
 Virginia Makins (Shapiro) ■
 Carol Mellor (Atkinson) ■
 Carola Mercer (Anderson) ■
 Joyce Robinson (Tattersall) ■
 Angela Robinson (Pedlar) ■
 Sally Sampson (Bentlif) ■ ■
 Christine Stone (Gregory) ■
 Anne Williams (Waldron) ■
 1 Anonymous Donor

1958

Diana Brass (Buxton) ■ ■
 Helen Crowe (Dale) ■ ■
 Barbara Doubtfire ■
 Jenepher Hawkins (Neil) ■
 Sarah Knight (Prideaux) ■
 Lisa Miller (Davies) ■ ■
 Janet Momsen (Henshall) ■ ■
 Margaret Morrell ■
 Anne Mountfield (Newsham) ■
 Jane Reilly ■
 Joan Rudd (Bower) ■ ■
 Carolyn Schofield ■
 Anne Simor (Crowe) ■ ■
 Susan Treggiari (Franklin) (HF) ■ ■

1959

Virginia Allport (Watson) ■ ■
 Hazel Archer Sanger (Archer) ■ ■
 Gay Gervin ■ ■
 Mary Haynes (Lambert) ■ ■
 Deh-I Hsiung ■
 Catherine Jarman (Warburton) ■
 Maureen Klebanov (Norton) ■
 Jenny Stratford (Lewis) ■
 Phoebe Wainwright (Malcolm) ■
 Joella Werlin ■ ■
 1 Anonymous Donor

1960s

1960

Diana Allan (Cotton) ■
 Hilary Almers (Turnbull) ■
 Helen Benton (Carrington) ■
 Lady Blatherwick (Clare Crompton) ■
 Deborah Chorlton (Thompson) ■
 Maureen Cruickshank (Ware) ■
 Mary Dicken (Bircham) ■
 Ruth Ellis (Kelham) ■ ■
 Carol Harris (Brown) ■
 Celia Holm (Haigh) ■
 Virge James (Taul) ■ ■
 Mary Morris (Poole) ■

Tansy Poole (Martin) ■
 Juliet Rogers (Curtis) ■ ■
 Carola Small (Martin) ■
 Monica Thorp (Pearson) ■

1961

Anne Andrews (Northover) ■
 Nora Angel (Naisbitt) ■
 Lady Berman (Christine Lawler) ■
 Diana Bowder (Gilbert) ■
 Patricia Dalrymple (Vickers) ■
 Christine Darby (Macnair) ■
 Mary Gladman ■ ■
 Fenella Heckscher (Greig) ■ ■
 Ann Kentfield (Hewetson) ■
 Deborah Land (Murdoch) ■
 Sarah Langton-Lockton ■
 Jennifer Marturet (Kirkwood) ■
 Jane Middleton (Troop) ■
 Elizabeth Newson (Shaw) ■
 Georgina Winkley (Smart) ■
 1 Anonymous Donor

1962

Jane Foster (Flower) ■ ■
 Diana Guy (Eade) ■ ■
 Everild Haynes (Williams) ■ ■
 Clare Howes (Cunliffe) ■
 Mary Jacobus (HF) ■
 Carolyn King (West) ■ ■
 Ann Marcus (Edwards) ■ ■
 Marion Michell (Cutler) ■
 Penny Neary (Warren) ■ ■
 Marianne Neville-Rolfe ■
 Rosemary Quillinan ■
 Carol Stewart ■ ■
 Alice Wakefield (Wakefield-Ward) ■
 Veronica Warner (Smith) ■
 Ann Wilks (Robson) ■
 Margaret Winterbourne ■

1963

Caroline Arms (Elston) ■
 Deirdre Brunning (Shotton) ■
 Mimi Danson (Price) ■
 Tessa Dunstan (Fripp) ■ ■
 Jane Grove Annesley (Holder) ■
 Rachel Hayhow (Hawthorn) ■
 Isabel Hitchman ■
 Jill House (Turner) ■
 Ann Hutchison ■ ■
 Janet Lockwood (Mills) ■
 Virginia Osborne (Clutterbuck) ■
 Jenny Pedley (Ashby) ■
 Sheila Peskett ■
 Susana Raby ■
 Alison Soscice (Black) ■ ■
 Annie Spencer (Fleming) ■
 Helena Wiesner ■
 3 Anonymous Donors

1964

Ingrid Dodd (Eske) ■
 Diana Dunford (Coley) ■
 Paula Flynn (Field) ■
 Ann Gentry (Gardiner) ■
 Christina Mackwell ■
 Anna McNair Scott (Colquhoun) (FF) ■ ■
 Anne Muers (Packwood) ■
 Frances Payne (Harrison) ■
 Phyllida Pyper (Franks) ■
 Caroline Rodger ■ ■
 Cathy Slater (Phillips) (HRF) ■
 Mary St Clayre (Greve) ■
 Josephine Townsend (Miller) ■
 Sue Tyson (Yarker) ■ ■
 Dame Marina Warner (HF) ■
 Christine Whittaker Navez (Whittaker) ■ ■
 1 Anonymous Donor

1965

Philippa Addison (Manners) ■
 Jane Davies ■
 Susan Edwards (Hannabuss) ■
 Audrey Griffin * ■
 Helen Griffiths (Middleton) ■ ■
 Helen Issler ■
 Eleanor Jack (Rees) ■
 Nancy Johnson ■
 Caroline Lancelyn Green (Bennitt) ■
 Teresa Love (Nash) ■
 Jennifer Mann (Callan) ■
 Sue Sinclair (Stokes) ■
 Cecilia Storr ■
 Susan Williams (York) ■

1966

Sharon Churcher ■
 Barbara Cox ■
 Jean Dollimore ■ ■
 Deirdre Fordham ■ ■
 Carolyn Foreman (Passmore) ■
 Sue Gokgor ■
 Fiona Gow ■
 Carole McKeown (Hoar) ■ ■
 Gillian Murdoch (Stubbs) ■
 Barbara Packer (Jack) ■
 Beth Rainey ■
 Mary Riggs (Howell) ■
 Susannah Ross ■
 Elizabeth Stazicker (Hawke) ■
 Jill Waters (Dingwall-Smith) ■
 Susan Wollenberg (Bookin) (EF) ■
 3 Anonymous Donors

1967

Susan Behrens (Butler) ■
 Daphne Briggs (Nash) ■
 Susan Buckee (O'Flaherty) ■
 Frances Carey ■
 Margaret Cawkwell (Hetherington) ■
 Anne Cullen ■

Diana Edwards (Brown) ■
 Penny Fuller (Freer) ■ ■
 Janet Montefiore ■
 Sheelagh Neuling (Alabaster) ■
 Sarah Page (Bramhall)
 Jane Parkin (Witherington) ■ ■
 Griselda Pollock
 Sarah Radcliffe (Thompson) ■
 Helen Ramsdale ■ ■
 Wendy Robinson (Davis)
 Mary Sarantis (Spice)
 Paula Sells (Muir)
 Katherine Sloper ■ ■
 Janet Stevens (Keyte) ■ ■
 Margaret Williams (Hillier) ■
 Tricia Yardley (Edwards) ■

1968

Jenny Fiskén (Street) ■
 Liz Gibson (Sarson) ■ ■
 Paula Griffiths ■
 Sheila Grundy (Chambers)
 Philippa Herbert (Hooper (King))
 Linda Hockey (Tarry) *
 Margot Metcalfe (Bellamy) ■
 Julia Moore (Herlihy)
 Katharine Nairne
 Vivienne Pozo (Allen) ■
 Anne Roberts (Conybeare) ■ ■
 Elizabeth Rothwell (Johnson) ■
 Helen Rowett (Fechan) ■
 Dame Elizabeth Slade (HF) ■ ■
 Katrine Whitaker (Dalitz) ■
 3 Anonymous Donors

1969

Plaxy Arthur (Corke)
 Barbara Baird (Gregory)
 Faith Boardman (Mills) ■
 Patricia Brims (Henderson) ■
 Sue Budgen ■
 Rachel Cartland (Howard)
 Christine Coleman (Abel) ■ ■
 Jane Cooper (Merriott) ■
 Elaine Drage (Collier) ■ ■
 Georgina Drummond (Lloyd) ■
 Rosalind Ebbutt-Hadman (Ebbutt)
 Isobel Goulding (Fisher) ■
 Deborah Grice (Wicks) ■
 Avril Hanson (Rashleigh)
 Priscilla Hother (Clark) ■
 Dame Frances Lannon (HF) ■ ■
 Ingrid Lawrie (Gilbert) ■ ■
 Pauline Lewis ■
 Sandra Nicholson (Burman) ■ ■
 Eleanor Nowers (Thwaites) ■
 Claire Robinson (France)
 Sue Taylor ■ ■
 Caroline Tucker (Macready) ■
 Adriana Turpin (Morison) ■
 Anna Walker (Butterworth) ■

Diana Walton
 Rosalind Wheare (Spice) ■
 Ann Widdecombe ■
 Patricia Wilks (Hackforth) ■
 3 Anonymous Donors

1970s

1970

Eleanor Benson (Silver)
 Liz Coleman (Baker)
 Kate Cooke (Collins) ■ ■
 Monica Darley ■
 Jane Douglas ■ ■
 Elise Elderkin ■
 Marna Gowan (Williams) ■
 Gillian Harvey (Harding) ■
 Margaret Hebblethwaite (Speaight)
 Rita Kleppmann (Evans) ■
 Joanna Leech (Kitchin) ■
 Pamela Lighthill
 Ruth Mastenbroek (Walters) ■
 Elizabeth Mills ■
 Susan Molyneux Warner (Cuthbert) ■
 Joanna Motion (Powell) ■
 Jane Murphy ■ ■
 Judith Simpson ■ ■
 Mary Smith (Streatfeild) ■
 Charlotte Tester (Bacon)
 Elisabeth Thom (Mardall) ■ ■
 Ruth Turnbull (Jenkins) ■ ■
 Judith Wale (Lough) ■
 Pippa Walker
 2 Anonymous Donors

1971

Bryony Allen (Batchelor) ■
 Helen Cockroft (Mudge) ■
 Margaret Coombe (Mallaband) (FF) ■ ■
 Elizabeth Coons ■
 Catherine Cowan (Garnett) ■
 Juliet Davies (Hirst)
 Carla Findlay (Marchetti) ■
 Jenny Griffiths (Hind)
 Meena Jefferys (Savla)
 Joan Link (Wilmot) ■
 Dame Judith Macgregor (Brown) (HF) ■
 Valerie Mitchell ■ ■
 Alison Moore (Foote) ■
 Heather Norman Soderlind
 (Soderlind) ■ ■
 Patricia Pearl (Smallwood) ■
 Sue Scott (Dean) ■
 Jacqueline Smith ■
 Mary Stafford (Swatman) ■
 Harriet Thistlethwaite ■
 Sarah Tyerman (Wallis)

1972

Alexandra Banay (Sharpe) ■
 Sarah Baxter (Stowell) ■

Nicky Bull (Harper) ■ ■
 Matilda Cockbain (Ellis) ■ ■
 Sue Dale (Harvey)
 Nali Dinshaw ■
 Sara Impey (Bonner)
 Penelope Mowbray (Brunet)
 Sandra O'Dell (Barlow) ■
 Wendy Proctor
 Carol Record (Steven) ■
 Petra Schlupp (Coffield) ■
 Mimi Somjee (Jumabhoy)
 Chloe Stone (Grundy) ■
 Margaret Wainwright (Smith) ■
 Sue White (Morton) ■
 Veronica Zundel ■
 1 Anonymous Donor

1973

Lucy Barker ■
 Alice Bates (Thurau) ■
 Ruth Bourne (Dobson)
 Rachel Cadell (Watson) ■
 Gillian Cooper ■
 Shaan Everson (Akester) ■
 Georgina Ferry ■
 Emma Johnson-Gilbert (Woodhouse) ■
 Tessa Kerwood
 Elena Letemendia
 Penny MacLeod (Bingham) ■
 Chrissy Merton
 Linda Muirhead (Johnson) ■ ■
 Jo Poulton (HRF) ■
 Elisabeth Tooms
 Rose Walker
 Anne Willcocks

1974

Jane Aldridge (Bennett) ■
 Bernice Allman (Paton) ■
 Jo Andrews ■
 Hilary Ash (Gray)
 Michelle Banks (Roche) ■
 Corinne Clugston (Robertson)
 Rachel Craig (Salisbury) ■
 Stephanie Davies (Mills) ■
 Jane Doull ■
 Pia Eekelaar (Lewis) ■
 Alison Gomm ■
 Judy Hague ■
 Dorian Hames ■
 Alison Hardingham (Douglas) ■
 Josephine Hayes ■
 Sophy Holland
 Ruth Honey (Jefferson)
 Alison Johns
 Elizabeth Kyberd (Cope)
 Elizabeth Long (Maude)
 Diana Martin ■
 Harriet Mitchison ■
 Fiona Robertson (Bennett) ■
 Victoria Schofield ■

Rosemary Sharpe ■
Rona Slator ■
Barbara Tate (Buchanan)
Hazel Taylor ■
Frances Thomas (Brown) ■
Susan Trickett (Bell) *
Sarah Wilson ■
Sarah Wookey ■

1975

Annie Bentley
Valerie Chamberlain ■ ■
Sheila Cook
Carol de Lusignan (Gilchrist) ■
Wendy Dew-Jones (Hill) ■
Deborah Forman (Manthorpe) ■
Sarah Gould ■
Caroline Hogarth (Powell) ■
Sarah Hughes (Kent)
Paula Hughes
Linden Lawson ■
Diana Lazenby (Howell) ■
Jane St Aubyn (Brooks)
Jane Wyman (Ryan) ■
2 Anonymous Donors

1976

Sarah Brown
Kathleen Coleman ■
Nicky Devlin ■
Baroness D'Souza (Frances Russell) ■ ■
Gail Featherstone (Salisbury) ■
Kate Hamblen (Hayden) ■
Clare Hatcher
Ann Heavens (Cook) ■
Anne Hertzell (Tootill) ■
Angela Jameson ■ ■
Joyce Lewis (Halliday)
Caroline Lumb (Tiddy) ■
Nicola Manby (Croome) ■ ■
Sheila Markham ■ ■
Pauline Millican (Terry) ■
Philippa Owen (Reid) ■
Kathy Smith (Bone) ■
Liz Tanner ■
Rosemary Zolynski
1 Anonymous Donor

1977

Lucy Bourne (Pollock) ■
Carolyn Carr (Jones) ■ ■
Margaret Chambers ■
Hilary Curtis (Mudge) ■
Jane Dawson (Trepte)
Gillian Fowler (Chester)
Anne Fry (MacInnes) ■ ■
Carole Gannon ■
Ann Handford (Wilson) ■
Fiona Hedges
Lise Hopwood (Halliwell) ■
Isabel Hudson (Draper) ■

Jenny James (Harris)
Alison Kenney ■ ■
Marion Kerr ■
Christine Mitchell (Saxton) ■
Barbara Moore ■
Hunada Nouss ■ ■
Carol Sinclair (Eaton)
Sally Spensley (Jacobs) ■
Diana Timms (Gore)
Caryl Varty (Prior Varty)
Loraine Watson ■ ■
Susan Wood (Winfield) ■
3 Anonymous Donors

1978

Morag Ballance ■
Cathleen Blackburn (O'Mahony) ■ ■
Domenica Dunne (Fraser) ■
Elizabeth Fairhead (Duckworth) ■
Penny Ferguson (Hewitt-Jones) *
Tessa van der Willigen
1 Anonymous Donor

1979

Chris Appleton
Susan Beardmore (Richards) ■
Caroline Boyle (Tuckett) ■
Cindy Bull (Harrison) ■
Karen Down (Bettesworth) ■
Ewan French ■
Kristin Gould (Jones) ■
Mark Hanley-Browne ■ ■
Stephen Hester ■ ■
Karen Hicklin (Ellison)
Mark Hobbs ■ ■
Sue Joshua ■
Peter Kelly ■
Harriet Kemp ■ ■
Sarah King
Catherine Merry (Atkinson) ■
Simon Pennock ■
Martin Pope
Miranda Smart (Long)
Frances Stead Sellers (Stead) (VF) ■
Miyuki Suzuki
Graham Thick ■
Andrea Wood (Knox) ■
Tullie Yeghen ■
3 Anonymous Donors

1980s

1980

Kathryn Barron (Fletcher) ■
Roderick Barron ■
John Beardmore ■
Liz Berrisford (Rich) ■
Tracy Brown (Brining) ■
Dhanesh Goberdhan ■
Bill Green ■
James Halliwell

Shaheed Haque ■
Phil Harrison ■ ■
James Legg ■
Philip Lewis ■
Louise Locock ■
Raina Miles (Horrocks)
Julian Nott ■
Jacqueline Oates (Cook) ■
Andrew Saul ■
Helen Shabetai (Skerratt)
Lysbeth Sleath (James) ■ ■
Clare Spacie (Sylvester) ■ ■
Lisa Stewart (Murphy) ■
Judith Tew (Heald) ■
Katrina Williams
1 Anonymous Donor

1981

Alison Beckingham (Woodcock) ■
Andy Beckingham ■
Paula Berry ■ ■
Andrew Bungard ■ ■
Jenny Carey (Dodge)
Alicia Clegg ■
Liz Conway ■
Rose Duly (Smeed)
Wendy Innes (Brooks)
Dame Nerys Jefford ■ ■
Derek O'Neill ■
Shirley Park (Carter) ■
Sharon Ray (Holmes) ■
Jenny Rowley (Cook) ■ ■
James Sutherland
Peter Tyler ■
David Westwood ■
Andrew Wood ■

1982

Anne Bowtell ■
Tracy Charley (Cook) ■
Nathan Goode
Vanessa Hammerton (Rumboll) ■
Anne Homa (Wilkinson) ■
Pamela Lentschner (Cleverly) ■
Michael O'Sullivan (FF) ■
Jill Troy (Bradshaw) ■

1983

Guy Browning
Stephanie Burns
Andy Carr ■
Rosemary Carr (Bond) ■
Raymond Chan
Julie Clarkson
Nick Collier ■
Rebecca Cunningham (Davies-Jones) ■
Stephen Edwards ■
Simon Evans ■
Catherine Fooks (Taylor) ■
Alison Hall (Wilson) ■
Julia Hilton ■

Caroline King (Daw) ■
 Anne-Marie Lawlor ■
 Mark Learmonth
 Georgina Paton (Back) ■
 Doug Shaw ■
 John Shipsey ■
 Caroline Slay (Rowe)
 Clare Smith ■
 Naomi Starkey (Holmes)
 Sapna Subhani (Tolaney) ■
 Michael Thomas ■
 1 Anonymous Donor

1984

Catherine Crawford ■
 Nick Dixon ■
 Richard Fisher ■
 Jane Harland ■
 Kim Hatcher
 Andrew Hayes ■
 Catherine Holden
 Sarah Hudson (Naylor) ■
 Bruce Jenkyn-Jones ■
 Sam Kiley ■
 Iain Morley ■ ■
 Farah Namazie
 Jane Robertson ■
 Fiona Shipsey (Russell) ■
 Michael Solender

1985

James Allen
 Mike Baxter
 Victoria Bentata Azaz (Bentata)
 Katharine Burn ■
 Julian Cohen
 Martin Delve
 Ian Laming
 Simone Ling ■
 Sally Nex (White) ■
 Graham Oliver
 Paul Packham ■
 Polly Richards ■
 Maria Ross (Smith)
 Sam West (HF) ■
 2 Anonymous Donors

1986

Sara Bennisson ■
 Simon Bentley
 Denise Brown ■
 Lucy Charrington
 John Graham-Cumming ■
 Julian Granville ■
 Daniel Gritz
 Adrian Higgins ■
 Iain Hildreth
 Bruce Jeffreson ■
 Louisiana Lush ■
 Carol Percy
 Marek Pruszewicz ■

Felicity Reeve
 John Roberts
 Seamus Tucker ■
 Tommy Wareing ■

1987

Nicholas Burke ■ ■
 Hong-I Chen ■
 David Clark (HRF)
 Lisa Craig ■
 Rachel Davies ■
 Tim Ewington ■ ■
 Baroness Finn (Simone Kubes) ■
 Kathleen Finn ■
 Adrian Hull ■
 Roland Martin ■
 Charlie Mawer ■
 Graeme May
 Julia May (MacCallum)
 Paul Mukherjee ■ ■
 Suzanne Pattle (Oliver)
 Cherry Pritchard (Morris) ■
 Paul Raven ■
 Andrew Reid ■
 Paula Riedel (Mallick)
 Jonathan Rush ■ ■
 Martin Smith ■
 Julia Strauss ■
 Janet Unsworth (Alderdice) ■
 Rebecca Williams
 2 Anonymous Donors

1988

Jenny Barker (Mason) ■
 Susannah Cox-Johnson (Wilkins) ■
 Jamila Fattah ■ ■
 Kate Grunstein ■
 Alex Hobson
 Clare James (Garner)
 Melody Jones (Goddard) ■
 Ian Morrison ■
 Jennifer Oughourlian (Banks) ■
 Ian Pindar ■
 David Proshan ■
 Mike Richards
 Corinne Saunders ■
 Jim Sparrow
 Peter Tang
 Paul Toon ■
 Sarah Turton (Drake) ■
 Claire Wardell ■

1989

Kate Anderton ■
 Soondra Appavoo ■
 Jeanie Barber (Wood) ■
 Andrew Byford ■
 David Farwell ■
 Lisa Harris ■
 Richard Heath
 Alexis Huang ■

David Mapstone
 Ian Nash ■
 Ziggy Pothoff
 Kirsteen Robson (Williams)
 Nick Simpson ■
 Natalie Smith (Adams) ■
 Vicent Smith ■
 Trevor Walker ■
 Ros Walton (Horner)
 Rebecca Watson (Chaplin)

1990s

1990

Nick Baikie ■
 Andrew Barber* ■
 Colette Barclay
 Mark Beer
 Emma Bloxham ■
 James Bridges ■
 Michael Casey
 James Dickinson ■
 Andrew Dunn ■
 Alison Edey (Baxter) ■
 Philip Edey ■
 Huw Evans ■ ■
 Kirsty Hackshall (Searles) ■
 Claire Hayes ■
 Paul Howarth ■
 Sally-Anne Huang (Blakemore) ■
 Henrik Langelüddecke
 Richard Lofthouse ■ ■
 John O'Connell ■
 Steven Osborn
 Rob Salem ■
 Danielle Toutoungi ■
 Alice West (Hindle)

1991

Gareth Campbell
 Claire Douglass ■
 Liza Fairfull (McCormick)
 Amanda Foreman ■
 Natalie Graham
 Garreth Hayes ■ ■
 Karl Holmes ■
 Elizabeth McLeish ■
 Scott McPherson ■
 Paul Severn ■
 Mike Shorthouse ■
 Mark Taylor ■

1992

Sara Barnard (Healey)
 Blaise Bradley
 Heather Caswell
 Tim Day ■
 Ross Elder
 Shaori Guo
 George Hooper ■
 William Lam

Mark Langford ■
Shaun McEvoy ■
Cathy Newman ■
Lynette Norton (Ashford) ■
Nick Parish ■
Isabella Roberts ■
Gabriel Sewell (Linehan)
Clare Shoults ■
Mark Todd
Patrick Wallaert *
Lucy Williams (Jones)

1993

Adrian Cloake ■
Michael Debenham
Chris Eason ■
Ned Fenston ■
Clare Heard (Poyser) ■
Benjamin Holland
Philip McCluney
Cristina Neagu
Jamie Salter
Dean Underwood ■
1 Anonymous Donor

1994

Jenny Allen (Admans) ■
Eric Bunselmeyer
Debbie Cloake (Collins) ■
Mark Collins ■
Mark Dwyer ■
Nick Gavin-Brown ■
Phil Hall
Alex Jarvis ■
Mike Jones ■
John Locker ■
Anne-Marie McBrien (Mitchinson)
Zac Meadows ■
Becca Miller
Rebecca Tuck ■
Nick Van Benschoten ■
Esther Wallace (Mustchin) ■
Sarah Williams (Popple)
Tim Williams ■

1995

Alice Carberry (Percival) ■
Neil Carberry ■
James Chard ■
Sam Coulthard ■
Ariane Crampton ■
Michael George
John Grennan
James Harvey
Paddy Hayes
Gareth Miller
Laura Muir ■
James Scragg ■
Grant Tapsell (F) ■ ■
Alison Tysoe (Edge) ■
Rebecca Warren (Martin) ■

Catherine Williams (Elgar) ■

1996

Poppy Adams (Teacher) ■ ■
Zahaan Bharmal
Emma Bong (Truett) ■
Amanda Borthwick (Tipper)
Tracy Bownes (Gofton) ■
Eleni Canellos
Ferzana Haq
Emma Huber (Leeson) ■
Boon Kwan
Heather Mulahasani (Allsop) ■
Adam Packer
Sally Riggs
Edward Song ■
Peter Wainman ■
Edward Wallace ■
Jun Wong

1997

Simon Andrews ■
Jimmy Clare
Peter Enskat
Alison Hallas (Longworth) ■
Ken Ho
Ghassan Kansou (Kansov)
Nick Lambert ■
Cara LaPointe (Grupe)
Robert Learney
Stephen McGowan ■
Kate Scott (Landells)
Bryan Shacklady
Jo Shanmugalingam (Edwards)
Alex Stacey (Robat)
James Stacey
Peter Thonemann
Lucy Weber (Clissett)
Mark Weber

1998

Kiran Arora
David Bakstein
Jane Bass
Stuart Burnside
Samuel Chillcott
Sam Gilbert ■
Jessica Haley (Slater) ■
Lucy Lewin (Warren) ■
Sophia Li
Kirsten Meier (Cooper)
Judie Ng
Michael Noone ■
Alexandra Pike (Price) ■
Christina Ransom (Edwards) ■
Jim Sullivan
Katherine Walker (Trippe) ■
Sophie Walker ■
Lisa Webster (Mason) ■
1 Anonymous Donor

1999

Jonathan Adams ■
Matthew Board
Keith Crothers ■
Kitty Dinshaw ■
Priya Dutta ■
Tom Edmonds ■
Kate Harden (Smith) ■
Naomi Holdstock ■
Simon Howarth ■
Susanne Hughes
Andrew Humphrey
Ben Nicholfield (Nicholson) ■
Ben Pine
Ryngan Pyper ■
Chris Sandilands ■
Clare Stansfield ■
Petra Teacher
Evelien Visser ■
Sarah Whiteside ■
James Wilton ■
Harriet Worth
Roy Wouters ■

2000s

2000

Johan Bergström-Allen ■
Myra Bernardi
Elena Greer
Rose Hasler ■
Alex Hickman
Catriona Horey (Matthews)
Doug Johnston (Johnson) ■
Madelaine Kelly (Burnham) ■
Tom Kelly ■
Thomas Riley ■
David Seale (Locke)

2001

Trevor Ashley
Ruth Bowen ■
Sarah Boyd
Rachel Haverson ■
Jiang Jiang
Lily Kennett
Olga Markoulides (Papadopoulos)
Paul Musselwhite
Joseph Nwokobia ■
Marcel Pribsch ■
Christopher Pulman ■
Diana Shaw (Román)
Pooja Sinha
Helen Turner ■
Richard Walters
Peter Wilson ■
1 Anonymous Donor

2002

Richard Baderin ■

Harriet Ball
 Catherine Beckett (McMillan) ■
 Bethy Grossman ■
 Bryan Koo ■
 Lyndsey Laverack (McAuley)
 Tom Macdonald ■
 David Matthews ■
 Shaun Melvin ■
 Christine O'Connor ■
 Emma Phillips ■
 Richard Todd
 Craig Walsh ■
 Jonathan White
 Pan Zhou

2003

Emos Ansah
 Zara Bielkus
 Ruthi Brandt
 Steve Briddon
 Keelan Carr ■
 Peter Clements
 Rachel Fiskien
 Elyn Hannah (Pugh) ■
 Rachel Johnson
 Ravi Lakhani ■
 Victoria Lonsdale ■
 Abhishek Majumdar ■
 Conor Moore ■
 James Norris ■
 Chloe Rogers ■
 Annette Ros (Stiggelbout)
 Tom Spinks

2004

Douglas Bett
 David Bruce ■
 Ollie Clough
 Jonathan Downing
 Michael Hirst ■
 Beth Hughes (Murtagh) ■
 John McClean ■
 Robbie Parkin ■
 Rosie Perry-Gosling
 Ian Phillips
 Michael Slavinsky ■
 Oliver Wickens
 1 Anonymous Donor

2005

Timothy Ashton
 Sourav Choudhury
 Alex Christofi
 Phil Drake
 Merlin Fulcher ■
 Geoffrey Gomery ■
 Stuart Grice
 Rachel Lockwood
 Jeremy Millard ■
 Ricki Nabeshima
 Shaun Passey ■

Hannah Piper Drake
 Claire Thomas
 John Wells ■

2006

Deborah Arianayagam
 Emily Burrows (Wright)
 Joe Burrows
 William Chipperfield ■
 Paul Hardwick
 Abigail Leadbeater
 Jan Machielsen
 James Mountain ■
 Marcin Sawicki ■
 Andy Spurr ■
 Catherine Vickers

2007

Kate Bowden
 Felicity Brown
 Oliver Cohen
 Emma Dickson ■
 Mark Hornsey
 Oliver Nicoll
 Freddie Page
 Joe Santoso
 Beth Steiner
 Louise Taggart
 Weiwei Xu
 Nasim Zargar Baboldashti

2008

Umberto Alessandria
 Eilyn Chong
 Karen Clarke-Taylor (Clarke) ■
 Paul Clarke-Taylor ■
 Caroline Davies
 Sarah Dawson
 Laura Hewitt (Murphy)
 Laura Hornsey (McDonald)
 Nina Kumari
 Conan McKenzie
 Eve O'Brien
 Jonathan Pearson
 Melissa Raybould
 Douglas Riddle
 John Williams

2009

Martin Cullen
 Matt Donovan
 Sarah Dove
 Benjamin Hilary
 Sarah Price
 Frederica Procope
 Philip Schroeder ■

2010s

2010

Laura Aitken-Burt

Joseph Akel
 Frankie Arnall
 Rosalind Axbey
 Alexander Barber
 Lydia Chapman (Buchanan)
 Amanda Gilbert
 Natalie Hudson
 Emily Johnson (Hinks)
 Rosa Kei
 Maria le Brun
 Liza Leung ■
 Benjamin Payne
 Kathryn Rahemtulla (Twemlow)
 Richard Russell
 Annie Sampson
 Suan Sheridan Breakwell (Sheridan)
 Amy Shim
 Bria Thomas
 Annabelle Trotter
 Mark Wilkinson
 Clare Willis (Wilson)
 Rachel York
 2 Anonymous Donors

2011

Caspar Bullock
 Jonathan Chapman
 Jonny Davidson
 Alexander Hanwell
 Kieran Hardern
 Rose Pashley
 Jordan Thompson
 Charlotte Wilde
 1 Anonymous Donor

2012

Alex Bradley
 Laura-Jayne Cannell
 Nicholas Coats
 Luke Cozens
 Holly Donovan
 Lewis Godfrey
 Yuna Han
 Antoine Harel
 Bella Heber
 Tracy Jennings
 Daniel Jones
 Christine Liu
 Victoria Rees
 Tiffany Shum
 Shivashkar Singh
 Hannah Spens-Black ■
 Zhi Hao Tan

2013

Robin Brown
 Aoife Fahy
 Jingjing Lou
 Kameel Premhid ■
 Chris Robson
 Laura Sobola

Luyang Tang
Ollie Watson

2014

James Brebner
Olivia Cormack
Jack Djanogly
Leo McGrath
Alexander Reyes-Wainwright
Kat Stein
Zak Thomas Johnson

2015

James Becker
Pip Cull
Kitty Murdoch
Meera Sachdeva
Mason Smith
Guy Steed

2016

Alex Gresty
Matthew Jackson
Caleb Ong
Grace Robertson
Chiara Steed (Leonardi)
Tamsin Taylor

2017

Pierre Banquy
Ben Gregson
Zamin Shabir

Trusts, Foundations, Companies, and Other Groups

COSARAF Charitable Foundation
Dunya Foundation
Gordon and Betty Moore Foundation
Malala Fund
Monday Charitable Trust
Ockenden International
Oxbow Partners
Oxford University College Contributions
Tiger Baron Foundation

Fellows and Staff

Stephen Blyth, Principal
Aziz Aboobaker (F)
Anna Abulafia (EF)
Anna Bates (F)
Michael Broers (EF)
James Carley (HRF) ■
Anthony Davison (HRF) ■
Xon de Ros (F)
Allan Doig (EF) ■
Brian Fall (HF) ■ ■
Michael Fraser (F)

Vincent Gillespie (EF)
Kate Hall (S)
Charlotte Heavens (S)
Ben Higgins (F)
Todd Huffman (F)
Sarah Jones (S)
Ann Kennedy (EF) ■ ■
Marie-Chantal Killeen (F)
Christina Kuhn (F)
Gordon Lord (EF) ■
Andrew Macdonald (F)
Anne Mullen (F)
Matthew O'Donoghue (S)
Sophie Ratcliffe (F)
Mark Robson (HRF) ■ ■
Carrie Scott (S) ■ ■
Nicholas Shrimpton (EF)
Richard Sommers (EF) ■
Fiona Spensley (F) ■
Grant Tapsell 1995 (F) ■ ■
Peter Watson (EF) ■
3 Anonymous donors

Friends and Family

Khwaja Abbas
Ammad Ahmad
Sheharyar Ali
Richard Allan
Jess Allen
Peter Angel
Sir David Attenborough
Areeb Azam
Tom Baird
Andrew Barnard
Jonathan Barton
Rod Batchelor
Hillary Bauer
Stephen Baxter
Sir Nicholas Bayne
Hannah Behrendt
Bob Bell
Jim Benton
Dan Bernard
Sir David Blatherwick
Kevin Bownes
Robin Briggs
Penny Brooke
Sarah Bruce and Andy Bruce
Jim Buckee
Gus Carey
Paul Carr
Callum Carty
Shirleen Chan
Joanne Chang
Jonathan Charley
Tim Clement
David Cockroft
David Cooke
Christopher Coombe
Campbell Cowan
Ghani Dadabhoy

Henry Darwin
Nicolai Dejevsky *
Katherine Dixon
Alex Dowding
Colin Drummond
Patrick Dunleavy
Lynne Dwyer
Rob Evans
Simon Featherstone *
Robert Fielden ■ ■
Norman Fleck
Asad Ghauri
Louise Gomery
David Gowan
Patrick Grattan
Paul Green
Bernard Hadley
Paul Hale
Penny Hall
Alistair Handford
Peter Hanson
Peter Harris
Amir Hashmi
Rose Hasler
Patricia Heavens
Robin Herbert
Emma Herdman
Martyn Hitchcock
Claire Howell
Christopher Howes
Bilal Hussain
Margaret Hutchinson
Sallen Ibrahim
Hamid Ismail
Mohsin Javed
Damian Kao
Lewis Kay
Mike Kerrigan
Donal Kerrigan
Imran Khan
Sarwar Khawaja
Nawaz Khokhar
Lisa Klein
Willi Kleppmann
Scirard Lancelyn Green
Jean Lawes
Raymund Lawlor
Hui Lu
Diarmaid MacCulloch
Salman Madani
Sarah Majumdar
Paul Malam
Julian Marcus
Jake Marshall
Sheraz Mehmood
Mian Amer Mehmood
Fred Michell
Yuliana Mihaylova
John Mills ■
Terence Mitchison
Sheikh Moeen Ul Haq

Marcus Mollan
Tony Moore
Charles Morgan
Ludmilla Morozova-Roche
Sandy Muirhead
Andrew Nichols
Joseph Oughourlian
John Oughton
Nicholas Page
Reeve Parker
Ruth Pavey
Talha Pirzada
Pharima Pongpairaj
Tim Pottle
Andrew Pritchard
Alison Proshan
Qasim Qasim
Sharon Ray
Gareth Rees
Graham Richards
Alan Robinson
David Saffery
Alan Saggerson
Hamish Scott
Victor Seidel
Robert Sells
Catriona Seth
Caroline Shackleford
Mark Shakespeare
Rod Shortell
Gail Sinai
Zanita Smedley-Aston
Kirstie Smith
Keith Snape *
Geoffrey Stevens

Edward Stourton
Phillip Sykes
Jane Taylor
Simon Taylor
Ralph Thomas
Gemma Tidman
Roger Timms
Clive Tucker
John Turing
Corinne Underwood
Richard Waite
Judith Wale
Paul Walker
Magnus Walter ■
Andrew Walton
Anne Andrews (Northover)
Florian Weig
Ramani Wijesinha-Bettoni
Lucy Williams
Sam Willis
Lionel Wollenberg
Andrew Wright and Katharine Wright ■
Tariq Zaman
13 Anonymous donors

Gifts in Kind

Clare Howes (Cunliffe) 1962
Phyllida Pyper (Franks) 1964

Gifts in Memoriam

Felicity Heal for Clive Holmes
David Law for Pamela Law (Batstone) 1952
Antony Shermoen for
Frances Harrison 1969

Michael O'Sullivan (FF) 1982
for Greg Power

For David Andrews

Myra Bernardi 2000
Douglas Bett 2004
Zahaan Bharmal 1996
Anthony Davison (HRF)
Ross Elder 1992
John McClean 2004
Ricki Nabeshima 2005
Steven Osborn 1990
Ben Pine 1999
Gabriel Sewell (Linehan) 1992
Oliver Wickens 2004

For Diana Kahn 1967

Hillary Bauer
Susan Buckee (O'Flaherty) 1967
Robert Hazell
Elizabeth Meek
Terence Mitchison
Ruth Pavey
Griselda Pollock

For Susan Trickett 1974

Beatrice Trickett
Gillian Trickett
Piers Trickett

Royalties from the Estates of

Winifred Hicken 1944 *
Val Flint 1955 *

**If you would like to discuss how you can help LMH reach its goals,
please contact:**

Anna Bates, Director of Development
Lady Margaret Hall, Oxford OX2 6QA
Telephone: +44 (0)1865 274362
Mobile: 07975 963292
Email: development.director@lmh.ox.ac.uk



Thank You

LMH student at the Open Day



LMH

Lady Margaret Hall

The Development Office, Lady Margaret Hall,
Norham Gardens, Oxford OX2 6QA

Email: development@lmh.ox.ac.uk

Website: www.lmh.ox.ac.uk/alumni

Telephone: +44 (0) 1865 274362

Registered Charity No. 1142759