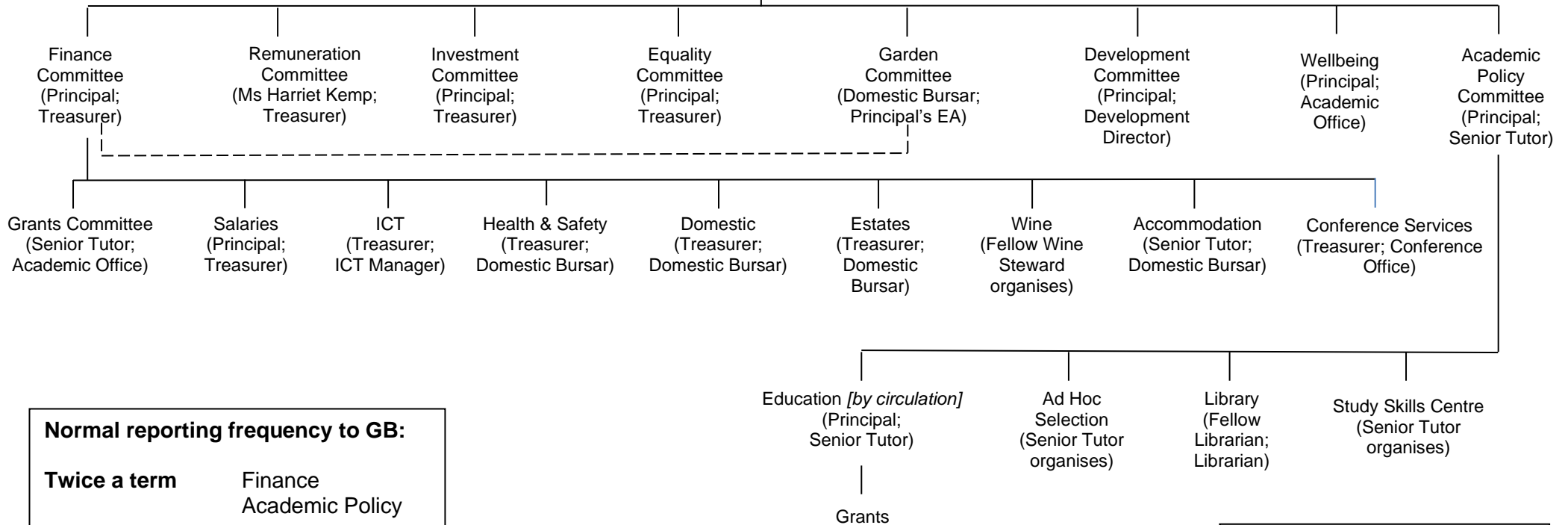


# Committee Structure 2023-2024

(Chair; Secretary)



## Governing Body



### Normal reporting frequency to GB:

<b>Twice a term</b>	Finance Academic Policy
<b>Once a term</b>	Investment Development Wellbeing Garden
<b>Once a year</b>	Equality Remuneration
<b>As appropriate</b>	Buildings Statutes Strategy

### Committees without upward reporting lines:

Chapel  
Amalgamated Sports  
Gym

### Ad hoc Committees to be convened when necessary, and report direct to GB:

Buildings  
(Principal; Treasurer)

Statutes  
(Principal; Treasurer)

Strategy  
(Principal; Treasurer)