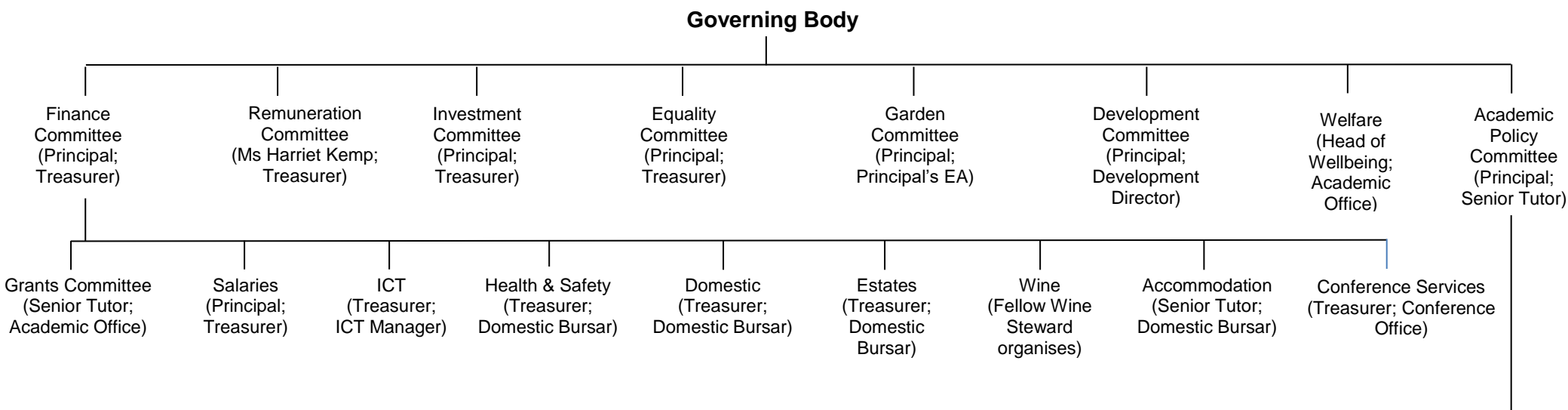


Committee Structure 2022-2023

(Chair; Secretary)



Normal reporting frequency to GB:	
Twice a term	Finance Academic Policy
Once a term	Investment Development Welfare Garden
Once a year	Equality Remuneration
As appropriate	Buildings Statutes Strategy

Committees without upward reporting lines:
Chapel Amalgamated Sports Gym

Ad hoc Committees to be convened when necessary, and report direct to GB:
Buildings (Principal; Treasurer)
Statutes (Principal; Treasurer)
Strategy (Principal; Treasurer)