



LMH

Lady Margaret Hall

UNIVERSITY OF OXFORD

Annual Report 2009



Contents

Principal's Report: Celebration and Challenge	2
Strategic Aims	4
Charity Registration, Charter and Statutes	5
Undergraduate Studies and Profiles	6
Graduate Studies and Profiles	8
Research Reports	10
Financial Report	12
The WildCRU Panthers	13
Alumni Relations	15
Fundraising Activity 2008-09	16
Visitor, Principal and Fellows 2008-09	18
Examination Results 2009	19
Scholars and Exhibitioners 2008-09	20
Prizes 2008-09	20
Fellows' Key Publications	21

Principal's Report: Celebration and Challenge

Lady Margaret Hall had much to celebrate and many challenges to face during the year 2008-2009. It was an appropriate time to recognise with gratitude the long-term growth and development of the College. We marked the 130th anniversary of our foundation, from the decision to go ahead in June 1878 to the arrival of the first nine students in October 1879. The past year was also the fiftieth anniversary of the formal recognition of the then womens' Colleges as full Colleges of the University of Oxford (1959), and the thirtieth anniversary of LMH extending equal opportunities to men along with women (1979). Moreover, 29 June 2009 was the 500th anniversary of the death of Lady Margaret Beaufort, in whose honour the College is named. LMH draws inspiration from all of these, and we cherish the passionate commitment of our Founders to scholarship and to fairness which is what links them all.





Frances Lannon

As we celebrated the vision and achievements of LMH in the past, we were also able to take some significant steps in the present and future development of the College. Along with all Oxford Colleges, we continued preparations to register with the Charity Commission. We introduced a new scheme of graduate scholarships. These were made possible by the generosity of senior members and friends of LMH, and assist outstanding postgraduate students to pursue their studies. (I turn to the question of undergraduate bursaries later in this report.) The LMH undergraduate finalists achieved much improved results in 2009, with more than 50% of students in Biochemistry, PPE, and Modern Languages gaining first class degrees. And – highly visible and clearly audible to members of the College – our ambitious building programme reached its first great conclusion. In December 2009

the College took possession of the new building that will provide accommodation for over 60 undergraduates, a stunning theatre, and dining, seminar and common rooms. Governing Body has decided to call it the Pipe Partridge building to honour the memory of the late Hilda Pipe (1939 History) and the late Betty Partridge (1943 Natural Sciences) who left major legacies to the College. Without their generosity and that of many other benefactors, predominantly former students of LMH, it could not have been built. The Simpkins Lee Theatre is named in recognition of the major gift from Neil Simpkins (1984 Physics) and his wife Miyoung Lee, and many rooms are also named in gratitude to kind donors who have helped provide beautiful and high-quality facilities for future generations of LMH students. Our thanks to all of them is unbounded. Finally, we received the wonderful news of a gift of £1.75m from the Clore Duffield Foundation towards

the creation of the Clore Graduate Centre. We thank Dame Vivien Duffield (Clore 1963 Modern Languages) and all the Trustees for this munificent gift which enables us now to move towards the second phase of our building project, the Graduate Centre, Porters' Lodge, and new entrance to the College. These will transform our provision for postgraduate studies at LMH, and create a new face to the world.

The initiatives and progress described in the previous paragraph flow from the commitments LMH made in the 2005-2009 Strategic Plan. We undertook to foster scholarship, to provide excellent teaching and facilities to enable our students to achieve their potential, and to support them with scholarships and bursaries. Good financial management, good governance, our commercial activity, developing the site, and fundraising all serve the core educational mission of the College. It is encouraging to see very positive results as we end the period of this Strategic Plan and prepare its successor. During his term of office as Vice-Principal (2003-04, 2005-09) Dr Nicholas Shrimpton made an exceptional contribution to the strategic development of LMH. We wish him well in retirement. »



» As we look ahead to our next phase as one of the great Colleges of Oxford University, LMH faces major challenges, as indeed does Oxford as a whole. In my report last year I warned that it would be very difficult to avoid a deficit in the 2008-09 financial year, and so it has proved. College investments were badly affected by the financial crisis during the year, Conference business was hard to sustain, and costs – especially salary and pension costs – increased ahead of income. Investment values have improved since the end of our financial year on 31 July 2009. The admirable new facilities that come into use in January 2010 will generate new income. But the underlying conundrum remains. Academic fees and grants for UK and other EU undergraduates are determined by government, and set at a much lower level than the actual cost of an Oxford education. Both LMH and Oxford University provide a substantial subsidy to every Home/EU undergraduate we admit. We know this situation will get worse as the pressures on public finances grow, and it is simply not sustainable indefinitely. On 23rd December 2009 Lord Mandelson announced huge cuts of almost £400 million in public funding for universities in 2010-11. For LMH and Oxford, this will mean a cut of at least 20%.

The Independent Review of Higher Education Funding and Student Finances launched by Lord Mandelson on 9 November 2009 is expected to report in the second half of 2010. In the context of this review, Oxford University is engaged in a comprehensive study of how to sustain academic excellence, a distinctive student experience based on personal tuition, and needs-blind access. It seems almost inevitable that the funding of higher education will require a greater contribution from families with the ability to pay, and from universities themselves through a new bursary scheme on a much larger scale than has existed up to now. The challenge to us, and to philanthropic giving, will be very great. We are greatly encouraged by the generosity of our senior members and friends, and by the successful co-operation of the whole collegiate University in the Oxford Thinking Campaign chaired by Dame Vivien Duffield. There is no doubt that we will need the support of the whole Oxford community worldwide to ensure to future generations of students the benefits of an Oxford education.

Frances Lannon
Principal

Strategic Aims

Major Strategic Aims for the period 2005-2009	Summary of achievements												
Foster and promote research and scholarship	In 2009: <ul style="list-style-type: none"> • Professor Guy Stroumsa appointed to new Chair in Study of Abrahamic Religions, and elected Professorial Fellow at LMH. • Dr Christina Kuhn appointed Fellow and Tutor in Ancient History. • Graduate Scholarships programme continued into second year. Since 2005 18 Professorial and Tutorial Fellows have been appointed.												
Achieve a Norrington score (in undergraduate final examinations) of at least 67%	2009 score: 67.84 Average score 2005-09: 65.44												
Sustain and improve access and outreach	<ul style="list-style-type: none"> • Full programme of Open Days, visits to and from schools, Sutton Trust summer school. • New website launched. 												
Build approximately 110 new rooms for students	<ul style="list-style-type: none"> • December 2009 Completion of Phase 1 of new build, with 66 student rooms, theatre, seminar, dining, and common rooms. 												
Refurbish approximately 150 student rooms	<ul style="list-style-type: none"> • Total 2009 refurbished: 31 in Toynbee • Total refurbished 2005-09: 197 												
Extend and modernise the library, and create a new Law library	Completed 2006												
Increase the Bursary Fund from £1m to £2.5m	Now stands at £1.45m												
Increase financial endowment to £30m (from a baseline of £20m)	<table border="1"> <thead> <tr> <th>End of Financial Year</th> <th>31 July 2009</th> <th>31 July 2008</th> </tr> </thead> <tbody> <tr> <td>Endowment:</td> <td>£21,417,000</td> <td>£26,216,000</td> </tr> <tr> <td>Reserves:</td> <td>£9,359,000</td> <td>£9,098,000</td> </tr> <tr> <td>Deferred Capital:</td> <td>£2,205,000</td> <td>£1,720,000</td> </tr> </tbody> </table>	End of Financial Year	31 July 2009	31 July 2008	Endowment:	£21,417,000	£26,216,000	Reserves:	£9,359,000	£9,098,000	Deferred Capital:	£2,205,000	£1,720,000
End of Financial Year	31 July 2009	31 July 2008											
Endowment:	£21,417,000	£26,216,000											
Reserves:	£9,359,000	£9,098,000											
Deferred Capital:	£2,205,000	£1,720,000											
Achieve £850k annually in donations	<table border="1"> <tbody> <tr> <td>2008-09</td> <td>£1,023,967</td> </tr> <tr> <td>Total 2005-09</td> <td>£7,929,713</td> </tr> </tbody> </table>	2008-09	£1,023,967	Total 2005-09	£7,929,713								
2008-09	£1,023,967												
Total 2005-09	£7,929,713												
Achieve conference income of £1m p.a.	<table border="1"> <tbody> <tr> <td>2008-09</td> <td>£786,000</td> </tr> <tr> <td>Average 2005-09</td> <td>£823,000</td> </tr> </tbody> </table> <p>2008-09 was a challenging year for Conference business. New facilities from Jan 2010 should enable us to increase it.</p>	2008-09	£786,000	Average 2005-09	£823,000								
2008-09	£786,000												
Average 2005-09	£823,000												
Achieve qualification as an Investors in People (IiP) Employer	<ul style="list-style-type: none"> • Scheduled to apply for accreditation in spring 2010 												

Charity Registration, Charter and Statutes

LMH's Charter of 1926 has only been amended three times before: in 1953, when LMH became a College; in 1960, when LMH formally became incorporated as one of the University of Oxford's Colleges; and in 1978, after Governing Body voted to admit men in the College's Centenary year to what had been a 'women-only' establishment.

The fourth change to the Charter relates to the implementation of the Charities Act 2006. The Colleges of Oxford, Cambridge and Durham Universities are currently charities but exempt from registration with the Charity Commission. When the Charities Act comes into effect, currently expected to be early in 2010, the Colleges will lose their exempt status, will have to apply for registration and then be subject to the regulation of the Commission. LMH has already indicated its willingness to register with the Charity Commission, and the application process will continue over the coming months.

A fundamental part of the application process is the statement of a College's objects or purposes, as they appear in the governing document(s); for LMH, these are the Charter, (like a certificate of incorporation for a company, which contains the College's objects) and the Statutes (like memorandum and articles of association). The Commission has to assess whether the objects of an applicant are exclusively charitable and for the public benefit and whether its activities serve those objects. It is also planned to take advantage of the opportunity to update and clarify our Charter and Statutes more widely.

Once Governing Body has approved changes to the Charter and Statutes, there is a lengthy process that has to be followed to confirm those changes, under the Oxford and Cambridge Act 1923. The changes have to be considered by the University of Oxford's Committee on Statutes before the Privy Council, to ensure there is no adverse implication for the University, and then sent to the Privy Council Office in London,



Helena Alexander
Administrator to the Treasury



Supplemental Charter, 23rd December 1960



before being laid before both Houses of Parliament. There are particular issues associated with Charity Commission registration:

- **Public Benefit** – LMH is working on a 'Public Benefit Statement' to make 'crystal clear' how its activities provide public benefit.
- **Trustees** – The members of LMH's Governing Body are already trustees, as LMH is currently a charity. Although Governing Body is confident that the College is managed properly today, it has decided that it is prudent to attend a presentation on the Charities Act 2006 and the requirements of the role of trustee from the Charity Commission's perspective, which include: accepting ultimate responsibility for directing the College's affairs; ensuring compliance with the requirements of relevant legislation and of regulators, in particular, the Charity Commission; acting prudently, that is, in essence, taking care of the College's funds and assets and avoiding undue risk; and exercising a duty of care and skill to ensure that the College is well-run and efficient.

- **Conflict of Interest** – There should be appropriate mechanisms in place to avoid conflict of interest in the role of members of Governing Body, as trustees, and in the operations of the College. LMH already has a robust Conflict of Interest Policy, which will be reviewed and updated, as necessary. The Terms of Reference of the Remuneration Committee, which has two independent and one Professorial Fellow not remunerated by the College as members, and considers Fellows' salaries and other remuneration, will also be clarified.
- **Registration of Related Bodies** – We will continue to discuss the Charity Commission's requirements (not taking effect before 2011) with respect to the JCR, MCR and Boat Club, with the representatives of these bodies. It is not likely that there will be a need for them to register separately with the Commission.

If all goes according to plan, by the time you read next year's Annual Report, or shortly thereafter, we hope LMH will be in possession of another Supplemental Charter under the Queen's Seal, and be formally registered as a charity by the Charity Commission!

Undergraduate Studies



Fiona Spensley
Senior Tutor

We were delighted that 24% of LMH students gained first class degrees this year. We expect all the undergraduates we admit to be capable of gaining a 2.1 degree, and 88 % of our students graduating this year achieved a 2.1 or better. It is this level of achievement which opens so many opportunities to our students, and they find themselves well prepared for their next move by our distinctive tutorial education. In difficult circumstances, a 2.2 can be a good result for individual students and that was certainly the case for several of the students who did not reach a 2.1 level this year. In addition to excellent academic achievement, LMH undergraduate students excelled in other areas in the last year: for example, we had 8 blues captains in the College, a president of the Oxford Union and an OUSU sabbatical officer. We celebrate our students' success in these other areas of University life, as these experiences will help them contribute to society after graduation.

In academic results, we were delighted that both our Biochemistry finalists achieved firsts. We saw strong performances in Modern Languages and English once again, with four and three firsts respectively. We were pleased to have four firsts out of seven finalists in PPE. The PPE tutors have been active in offering various extension activities for their students, which were taken up by this year group and may have contributed to this success. Dr Tom Porter, College Lecturer in Philosophy for the last two years, was much appreciated by the PPE students and we are happy that he has progressed

to a permanent post at Manchester.

We welcomed Dr Christina Kuhn to the Tutorship in Ancient History. She will continue to support students in the small schools of Classical Archaeology and Ancient History, and Ancient and Modern History as well as contributing to *Literae Humaniores*.

This year saw the retirement of Dr Nick Shrimpton, Tutor in English since 1980 and

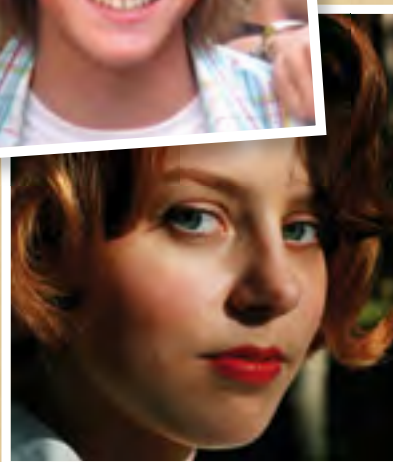
Vice-Principal for the last five years. He was an excellent Tutor and colleague and will be sorely missed in the College. We intend to maintain our strong English school by appointing a third Tutor when this is released by the University. In the interim, we have been fortunate to appoint a very experienced College lecturer, Dr Bharat Tandon. The funding crisis in the University means the College is still supporting the full cost of two posts in Law, and posts in Economics, Philosophy and Psychology as well as the English post.

In addition to excellent and experienced Tutors, it is stimulating to have the teaching contribution and fresh ideas of those who have recently completed their doctorates. Our strategy over the last five years has been to appoint Junior Research Fellows (JRFs) with a requirement to provide three hours tutorial teaching. This both integrates the JRF into the life of the College and allows our students to benefit from their engagement with cutting edge research. We have been fortunate to have Dr Simon Prince, Rigold JRF in Modern History, and Dr Lee Jones, Rose JRF in International Relations, who made significant contributions in their time with us. We are very grateful to Stuart & Eleanor Rigold who left a bequest to be spent in this way and to Guy Monson, Suzelle Smith and Don Howarth, and other donors for supporting the Rose fellowship for the last five years. We hope to raise further funds for such posts which provide excellent opportunities for the individual as well as for the College.

Owen Alun John 2nd year undergraduate in Law with German Law

Studying Law with German Law at LMH is a highly enjoyable experience, especially as I can focus on the theoretical aspects of law that interest me and discuss my thoughts on cases and academic research with tutors who are experts in their fields.

Outside of my studies I have attended talks by many of the renowned speakers who visit the University, including politicians, law lords and academics. I have also enjoyed meeting future students at College open days as JCR Access Officer, whilst being cox of the women's first boat has allowed me to take part in University rowing contests and make many new friends.



Anna Aleksandrova 2nd year undergraduate in Fine Art

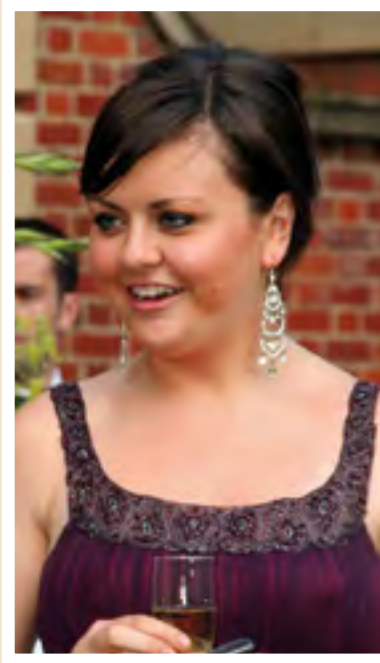
Doing Fine Art is more challenging than most people think. It requires excellent time-organisation skills in order to realise my best ideas. LMH supports art students greatly and gives excellent opportunities to organise exhibitions at the college. The library, surroundings and community of LMH inspires and helps me with my work. Ruskin School of Drawing and Fine Art always has so much to offer from workshops to talks and tutorials by famous artists. We also organise exhibitions all around Oxford with encouragement from Ruskin tutors. When I am not working on my art or attending to my duties as the president of the OU Russian Society, I enjoy climbing and shooting with Oxford sports societies.

FHS 2009

Subject	1st	2.1	2.2	3rd
Biochemistry (MBiochem)	2			
Biological Sciences		4	1	
Chemistry (MChem)	1	3	1	
Classical Arch. & Anc. History		1		
Computer Science (3yr)		1		
Computer Science (4yr)			1	
Economics and Management		3		
Engineering Science (MEng)	2	3		
English	3	7		
Experimental Psychology		2		
Fine Art	1	1		
History	1	6		
History and Politics		2		
Jurisprudence		7	2	
Literae Humaniores		3	1	
Mathematics (3yr)	1	1	3	1
Mathematics (4yr) (MMath)		2	1	
Mathematics and Computer Science (4yr)	1	1		
Mathematics and Statistics (4yr)		1		
Medicine (pre clinical)	1	4		
Modern Languages & Linguistics (4yr)		1		
Modern Languages (4yr)	4	2		
Music		1		
Philosophy and Modern Languages (4yr)		1		
Philosophy and Theology		1		
Physics (3yr)		1		
Physics (4yr) (MPhys)		1		
Physics and Philosophy (4yr)			1	
Physiological Sciences	1	1		
PPE	4	3		
Theology		1		
Total 99	24	63	11	1

Isabel (Izzie) Vickers

3rd year undergraduate in Economics and Management



The friendly and collegiate atmosphere at LMH, and furthermore the wider community of Oxford make this a wonderful place to study. Whilst the work is challenging, and demands a great deal of time, energy and focus, it never ceases to be stimulating and enthralling, and the standard of teaching allows me to push myself beyond any limits I thought I had. In spite of the workload, I manage to fit in non-academic activities, inside and outside of College. During my first year, I was put in charge of the following year's Freshers Week programme at LMH; I continue to be heavily involved in the JCR in my role as secretary, and my involvement in rowing at both College and university level during my first year was an amazing experience. Oxford at large, and the support of the LMH community has allowed me to develop into the driven, intellectual, and confident student I want to be, and I will be very sorry to leave.

Sunil Abraham

3rd year undergraduate in Mathematics and Statistics

Oxford is certainly an excellent place to develop mathematically. With LMH's financial and academic support, I have conducted mathematical research in America and Oxford the past two summers, presented papers at two academic conferences, and have two papers currently under review for publication. But if I had found only mathematics in Oxford, that would have been disappointing indeed. Studying with passionate people opens vistas, and for me they included politics and film. I co-chair the Oxford Chapter of Democrats Abroad and was honoured to be selected to attend the Telluride Film Festival Student Symposium. While Oxford has afforded me many opportunities, I am most grateful for LMH's medicinal benefits; a stroll in the gardens along the Cherwell soothed my headaches better than any pharmaceutical palliative.



Graduate Studies



Allan Doig
Tutor for Graduates

The Strategic Plan 2005-2009 set a number of targets for Graduate Studies. In the first place the target numbers were for the admission of 100 new Graduates per year, and over these five years the actual numbers were: 93, 84, 100, 107, 98. Stringent conditions are set for admission, and anticipating who will meet those is clearly an art rather than pure maths.

In last year's Annual Report I was able to announce the creation of a new Scholarships scheme for Graduates and this year another ten Scholarships were filled. It is a sad indication of the financial pressures on students that even at this high end of academic achievement, there were some to whom we offered awards who were still unable to fulfil the rest of the financial conditions; of course there were also those who were tempted away by larger awards, so the size and type of awards will be kept constantly under review to ensure that the funds are most effectively applied.

The new Undergraduate building is nearing completion, but its delay has put back the possible completion of the Graduate building to 2012. With a magnificent donation of £1.75M from the Clore Foundation it will be named the Clore Graduate Centre and one of my main objectives over the coming years will be working towards its realisation. When complete, the Centre will both provide splendid new study and social facilities and allow us to achieve our goal of accommodating at least 60% of our Graduates – up from only 33% before the 2005-2009 Strategic Plan. Graduates will then take their place at the front of College in the dominating position between the new quad and the Parks.

The very impressive lists of their publications in the last Annual Report and opposite indicate that they already occupy a significant position in the academic life of the College community. The new Graduate Scholars now have plans to develop a series of regular Graduate Research Seminars which will help us achieve our aim of developing subject clusters to enhance academic life and bring all three Common Rooms into a closer relationship.

Shivani Bhalla

Doctoral student in Zoology

I am a 3rd year DPhil student in the Department of Zoology. My study focuses on lions in Northern Kenya where I am based most of the time, however each year I visit LMH. Being an international student and interacting with the diverse group of students at LMH has helped me through my short stays in Oxford. The support given has been tremendous and the staff and students of LMH have always been accommodating in making me feel at home, away from my field base in Samburu, Northern Kenya.

LMH has awarded me the Warr-Goodman Scholarship for 2 years now and this has assisted me greatly as these funds go towards my tuition fees. This year I was honoured to receive "Africa's Young Woman Conservation Biologist of the Year" award by the Society of Conservation Biology. LMH funded my trip to Beijing, China, in July where I was fortunate to receive this award in person. I am extremely grateful to LMH for all the support they have given me to date.



David Baker

Masters student in English

I am researching the role of poetry as a medium for dialogue both within and about the courts of kings and rulers in the Old Norse world (c.900-1300) as part of my MPhil in Medieval English Studies. I really enjoy my course because of its superb interdisciplinary ethos. This year I have been able to take options in Insular Latin and Medieval Irish literature, both of which I hope will supplement my primary research and lead on eventually to a DPhil. I have found LMH a warm, welcoming and, above all, supportive community. While being here I have found time to play University sport, and to play in a local ceilidh band; I have also been Male Welfare officer for the MCR.



James Reeve

Doctoral student in Organic Chemistry

I am a second year DPhil student in the Organic Chemistry Department with Professor Harry Anderson. A huge problem amongst the sciences in the UK is the lack of communication between scientists in different fields. My funding comes from the Biotechnology and Biological Sciences Research Council, with the aim that funding scientists at the interface between Chemistry and Biochemistry will lead to an increased flow of ideas between the departments. The main focus of my research is the synthesis of novel dyes for the imaging of neuronal action potentials via second harmonic generation microscopy. This allows me to spread my work out into Biochemistry and Neuronal Physiology.

When I'm not in the lab, I make time to play rugby for the Oxford Graduate Barbarians Rugby Football Club and perform some of the duties expected of me as one half of the MCR President.



Sylvestre Burgos Doctoral student in Mathematics

I first came to Lady Margaret Hall to read for the MSc in Mathematical and Computational Finance. For my DPhil in Mathematics I chose LMH again. With the financial support of the college, I focus on algorithms used to estimate financial derivatives' sensitivities to market parameters.

LMH is an essential part of my Oxford experience. I have always felt at home there: the staff are incredibly friendly and helpful, the large library is open 24/7 (ideal for night owls like me), the dining hall offers superior food (Bravo le chef!). The buildings and gardens are truly splendid and it just takes a few minutes across the nice University Parks to walk to the science area.

The MCR is a fine place for a break with interesting and friendly people. Music lovers can meet at the choir (tenors are particularly sought after!) or practice on the college's superb Bechstein. I enjoy contributing to the graduate community as the Internal Affairs representative, dealing with everyday matters such as catering or accommodation.

Now you know why I feel so lucky to be a member of LMH.



Graduate Publications

Christine Andrews Paper: 'The Crystal Palace, Monumentalism and the Handel Festivals'. Invited by the AFUW/Q (Australian Fellowship of University Women) to give a guest paper at a luncheon at Women's College, the University of Queensland, Brisbane, Australia, June 2008

Abhishek Banerjee 'Double Dissociation of Spike Timing-Dependent Potentiation and Depression by Subunit-Preferring NMDA Receptor Antagonists in Mouse Barrel Cortex', (with R M Meredith, A Rodriguez-Moreno, S B Mierau, Y P Auberson, and O Paulsen), (2009), *Cereb Cortex* [Epub ahead of print]

'Presynaptic long-term self depression at developing neocortical synapses', (with A Rodriguez-Moreno, and O Paulsen), (2009), (under review)

Sarah Brinckmann 'Cellular and histopathological changes in the infrapatellar fat pad in the monoiodoacetate model of osteoarthritis pain', (with K Clements, A Ball, H Jones, S Read, and F Murray), (2009), *Osteoarthritis Cartilage* 17(6), pp.805-12

Sylvestre Burgos *Investigation into Vibrato Monte Carlo for the computation of Greeks of discontinuous payoffs*, (2009), Mathematical Institute Eprints, University of Oxford

Conference Paper: 'How to enhance the exploratory power of Qlucore Omics Explorer', (with M Fontes, M H Duong, L F Frohlich, D H Iversen, B Pawlowska, M Voigt, and N Zhudro), 23rd European Consortium for Mathematics in Industry Modelling Week, 23-30 August 2009, (to be published in the report of the conference)

Linda Davies Poster: 'Characterisation of the migration of neuroblasts during formation of the cranial sensory ganglia', with Dr Jo Begbie, at the Winter Meeting of the Anatomical Society of Great Britain and Ireland

Joe diCapite 'Intercellular Ca²⁺ wave propagation involving positive feedback between CRAC channels and cysteinyl leukotrienes', (with A Shirley, C Nelson, G Bates, and A B Parekh), (2009), *FASEB J* 23(3), pp.894-905

'Decoding of cytoplasmic Ca²⁺ oscillations through the spatial signature drives gene expression', (with S W Ng, and A B Parekh), (2009), *Curr Biol* 19(10), pp.853-8

'CRAC channels and Ca²⁺ signaling in mast cells', (with A B Parekh), (2009), *Immunol Rev* 231(1), pp.45-58.

'Targeting Ca²⁺ release-activated Ca²⁺ channel channels and leukotriene receptors provides a novel combination strategy for treating nasal polyposis', (with C Nelson, G Bates, and A B Parekh), (2009), *Journal of Allergy and Clinical Immunology* 124(5), pp.1014-21

Hon Fai Fung 'Improving primary school students' writing ability through inquiry-based learning projects', (with S Chu, Y F Yim, J Chow, K Chow, and N Ha), in *Integrated Learning: Theory and Practice (Primary School)*. W M W So, and S . Po (eds.), (2008), Hong Kong, Manhattan Press

Conference Paper: 'Primary four students' development of reading ability through inquiry-based learning projects', (with S Chu, S K Tse, E K Y Loh, K Chow, and H W R Ng), (2008), *The 2008 IASL Conference* [CD-ROM] University of California at Berkeley, Berkeley, CA, USA

Jan Machiels Seminar Papers: 'Demonology 101? Magic and the University of Leuven', Emphasis (Early Modern Philosophy and the Scientific Imagination Seminar) Seminar, Stewart House, London, 1 November 2008

'How (not) to Get Published: The Plantin Press in the 1590s', Center for the Study of Books and Media Work in Progress Seminar, Princeton University, 4 March 2009

Ioannis Papathanasiou 'The European Union's Identity as a Subject of the International Legal Order: Evolutions under the Treaty of Lisbon', (2009), *Cambridge Student Law Review* 5(1), pp.22-39

Ashish Patel 'An analysis of major UK newspaper articles pertaining to 'diabetes' and 'cure' over 1 year', (with P Chester, E D Kennedy, and D Matthews), (2009), *Diabetic Medicine* 26(4), pp.452-453

Lecture: 'Reading between the lines – diabetes and the media', delivered to the UK Diabetes Research Network meeting held at the Royal College of Obstetricians and Gynaecologists, London, 30 March 2009

James Reeve 'Amphiphilic Porphyrins for Second Harmonic Generation Imaging', (with H A Collins, K De Mey, M M Kohl, K J Thorley, O Paulsen, K Clays, and H L Anderson), (2009), *Journal of the American Chemical Society (JACS)*, 131(8), pp.2758-9

Suzanne Sheehy Conference Papers: 'PAMELA Lattice Design and Performance'; 'PAMELA Overview: Design Goals and Principles'; 'PAMELA Magnets - Design and Performance'; and 'PAMELA: Development of the RF system for a non-relativistic non-scaling FFAG', (with other participants), Particle Accelerator Conference, Vancouver, Canada, May 2009

Hanna Tuomisto Poster: 'Organic, conventional of combination? Energy and land use in the contrasting farming systems', (with I D Hodge, P Riordan, and D W Macdonald), 6th International Conference on Life Cycle Assessment in the Agri-Food Sector, Zurich, Switzerland, November 12-14, 2008. Available at: <http://www.art.admin.ch/themen/00617/01078/01152/index.html?lang=en>

Irwin Zaid 'How subdiffusion changes the kinetics of binding to a surface', (with M A Lomholt, and R Metzler), (2009), *Biophysical Journal* 97, pp.710-21

'Noisy swimming at low Reynolds numbers', (with J Dunkel), (2009), *Physical Review E* 80, 021903

'Bulk-mediated surface diffusion along a cylinder: Propagators and crossovers', (with A V Chechkin, M A Lomholt, I M Sokolov, and R Metzler), (2009), *Physical Review E* 79, 040105

Research Reports



Christine Wong
Fellow in Chinese Studies

China's Public Finance

Public finance matters. All aspects of public finance – how government raises money, how much it raises, and how the money is spent – affect economic growth, the distribution of income and wealth, and the delivery of such basic services as education and health. In the past year, public awareness of the role of public finance has been heightened around the world. As we watched our governments struggle with the global financial crisis, we are acutely aware that how they manage their finances through the downturn will affect our lives – how much and which services will be cut, and whether the huge deficits will lead to inflation down the road, and so on.

My area of research is China's public finance. Since public finance undergirds everything government does, this allows me to also dabble in topics such as education, health, rural and urban development, as well as public administration. In China, the transition from a planned economy to a market economy has required a wholesale revamping of the system of public finance, from how government taxes, how it collects taxes, to who makes the budget; and, because of the country's huge size, which level of government does what.

These reforms have been protracted and difficult. First, governments are

reluctant to make radical changes to their own conduct. More importantly, China suffered a catastrophic collapse of fiscal revenues during the first fifteen years of the transition. With revenues falling from one-third of GDP to only 11 percent, the government's reform options were sharply limited. The retrenchment steered clear of cutting staff or departments to avoid creating "losers" who would oppose the market transition. Instead, the government asked all public institutions to "find their own way" to meet funding shortfalls. The outcome is a peculiar mix of funding for even the most basic public services. Not only do public hospitals rely on patient fees and the sale of drugs to finance running costs, even the police have to raise their own funds to buy uniforms and handcuffs! The often unrestrained levying of fees and penalties created soft budget constraints for public institutions, and put many services out of reach of the poor. The collapse of central assistance to poor regions and rural governments also contributed to large disparities in public services, with especially marked contrasts between urban and rural services.

Today, China is an economic superpower, and budget woes are a distant memory. The government has vowed to fix public sector problems and redirect the economy toward building a gentler, kinder, 'harmonious' society. While increased budgetary inputs have helped, they alone will not lead to rolling back user charges since public employees depend on these "own revenues" to top-up salaries. Rebalancing China's development and improving public services will require fundamentally changing incentives and eliminating soft budget constraints that characterize the whole public sector, from central ministries, local governments to public service providers. These are hard reforms for any government to enact.



Judith Mank
Fellow and Tutor in Biological Sciences

The evolutionary biology behind the battle between the sexes

I have broad interests in evolutionary biology, especially in the relationship between the genome and the animal it encodes. Much of my current work is designed to understand this relationship by studying how evolutionary pressures differ between females and males, and how this ultimately translates up to the differences between the sexes in behaviour, anatomy and physiology that we see in so many animals.

Nascent genomic resources are making it possible to identify the actual genes that contribute to sex differences, and to study the ways that those genes change over time in order to understand male- and female-specific evolutionary forces. Because males and females share nearly an identical genome, many genes are sexually antagonistic, as they are beneficial to one sex and detrimental to the other. For these genes, male- and female-selective forces are contradictory, and the resolution of this conflict is the source of sex differences in traits like behaviour and physiology. I study the level of antagonism in the genome, the ways in which it is resolved, and how it changes over evolutionary history.

Much of my current efforts are focused on birds, which are ideal for these types of studies due to the prevalence of easily observed sex differences in plumage, behaviour, and size that have made them a model system for sexual selection since Darwin's time. Birds have an unusual degree of genomic stability that makes it possible to extrapolate across millions of years of evolutionary history with the two available genomes of the chicken and zebra finch. The group also has a system of female-heterogametic¹ sex chromosome inheritance which is theorized to aid in the evolution of sexually selected traits.

¹ A type of sex chromosome where males have two Z chromosomes, and females have one Z and one W chromosome. Examples of female heterogametic sex chromosomes are seen in birds, butterflies and many fish, including eels and sturgeon.

Even though males and females have nearly identical genomes, the ways in which they deploy them varies a great deal. The same gene can be expressed at different levels, resulting in different amounts of protein produced. This differential gene expression forms the molecular building blocks of phenotypic² differences between the sexes. I've recently been working on a series of studies measuring the gene expression for all the genes in the avian genome, and identifying how it changes over the life cycle. This project revealed that up to half of the shared genome differs in expression level between females

² Phenotype – an observable trait or characteristic of an organism, such as morphology, development, physiology, or behaviour.

and males, and that many sex differences observed in adults are actually the result of embryonic gene expression patterns. The data from this project also showed that sex-specific evolutionary pressures are strongest on females in late development, and shift to act more on males in adulthood.

I've recently started a new study on the W chromosome, which is confined to female birds in a way analogous to the Y chromosome in humans that is present only in males. Little is known about the W chromosome, and I'm trying to identify the genes that it carries using gene expression profiling. The ultimate goal of the project is to identify the ways that the W chromosome, and the genes that it harbours, functions in female reproduction.



Michael Broers
Fellow and Tutor in History

Napoleonic Europe

When I came to LMH in 2004, I had just completed a trilogy of books on the Napoleonic occupation of Italy, between 1799 and 1814. Since then, I have embarked on a project which tries to explore many of the issues that arose from this work, in the wider context of the whole of western Europe in the Napoleonic period. The University Press has shown gratifying confidence in this project, and contracted me to write a book entitled *Napoleonic Civilization: A Regime and its Agendas*, which I hope to complete by 2014.

Thus encouraged, I have been plunging into the very rich original sources in the French National Archives in Paris as often as possible, mainly reading the reports and correspondence of French officials throughout western Germany, the Low Countries and Spain, and even what is now Croatia and Slovenia, which Napoleon ruled between 1810 and 1814. As a result, my work has come to focus increasingly

on how the Napoleonic legal system – both the famous Code Napoleon and the whole French system of courts and legal process – was transplanted to other parts of Europe. Many of these sources have never been used before, which is quite surprising, given how detailed they can be. What has come to drive my project, is a long term interest in the origins of some of the fundamental building blocks of modern continental Europe: How did so many countries, containing such diverse societies and cultures, come to adopt virtually the same legal codes and practices, to the point that many places – the German Rhineland, the Netherlands, and eventually Spain and most of Italy – emerged with almost identical public institutions? I have been looking for some indications through the interaction of French officials – public prosecutors, judges, administrators, even gendarmes sent out from Paris – and their native, local colleagues in the courts and administrative institutions across the empire. Their disputes and rivalries, but also their attempts to pull together, seem to reveal at least in part, how Europeans came to live under similar institutions, while still retaining their cultural differences and mutual antipathies. Amidst the quarrels and cultural chauvinism, a growing sense of the worth of open public trials – as opposed to the *in camera*, inquisitorial methods that prevailed before Napoleonic rule – and of truly professional standards in public administration, can be seen emerging.



Just as interesting to the naturally nosy archival historian, is the remarkable, largely untold social history that came with exporting Frenchmen – and their very liberated wives – to other parts of Europe. Many were set down in quite remote, rural postings, and the tales of their relations with the foreign peoples they usually patronizingly called their administrés –

'the administered ones' – has produced moments of high comedy and social drama as well as useful, serious insight, during many a long day in the reading room. As with my previous work on Italy, I have found there is far more to Napoleonic history than battles! My next aim is to move the research from Paris and into the archives of Milan, Naples, Simancas in Spain, The Hague and Aachen.

There have been many enjoyable offshoots to this project, not the least of which is a small book called *Napoleon's Other War: Bandits and their Pursuers in the Age of Revolutions*, to be published by Peter Lang early next year, about the more colourful 'underside' of the great revolutionary upheavals that engulfed both Europe and the New World. Another, quite different, was organising a major international conference in Madrid, composed of leading and emerging Napoleonic scholars, partly funded by the Spanish Crown, the acts of which will be published in both English and Spanish, next year.



Richard Sommers,
Treasurer

Financial Report

This review looks at the College's finances over the past year. As we are coming to the end of the five years, 2005 to 2009, covered by the College's first strategic plan, it also takes the opportunity to look further back, before looking ahead to the opportunities and challenges which will influence the shape of the College's finances over the next few years.

Financial review of the year

The College has had a challenging year financially. A strong year of fundraising contrasts with income and expenditure issues, and a fall in the value of the endowment, resulting from further declines in financial markets.

Accounting standards dictate how donations should be treated. Unrestricted donations are included in Income within "grants and donations" (see Table). In 2009, such donations came to £437,000 (2008: £885,000) of which £288,000 (2008: £678,000) were allocated to the new buildings project. Donations specifically for the new building are treated as "new deferred capital" and were £485,000 (2008: £1,649,000), while donations for the permanent endowment are shown as "new endowments received" and came to £45,000 (2008: £728,000). Together with some fundraising events, donations for the year totalled £1,043,000 (2008: £3,295,000). Everyone at the College is grateful to all donors for all gifts and legacies as these monies are critical to ensuring that the College can meet its educational mission.

The Income & Expenditure Account shows a surplus of £172,000 (2.6% of expenditure). (2008: £966,000, 15.8%). Within Income are the unrestricted donations allocated to new buildings and without these, there would have been a deficit of £116,000 (2008: surplus £288,000). We consider this result to be acceptable, if not satisfactory; the College aims in each year to keep income and expenditure broadly in balance with a target surplus of £150,000 for capital refurbishment of existing buildings.

So, why has the underlying picture moved from surplus to deficit over the last year? Income, excluding grants and donations, rose by 1% but total expenditure grew

by 7%. Within Income, academic fees fell slightly, affected by lower student numbers, which can vary a little from year to year, and only a modest change in government funding, while conference income was down 9%, suffering in difficult economic times. Endowment income did increase slightly, but would have fallen sharply had not, under the sustainable spending rule, up to 4% of the opening valuation of the endowment been transferred to income, compared to up to 3.5% in the previous year. Expenditure was driven higher by: a sharp increase in utilities costs; the final award of a three year national pay agreement for academic staff being well above average inflation; and increased pension contributions, all factors outside the College's direct control.

Turning to the balance sheet, total funds ended the year at £33.0 million, a fall of £4.1 million (11%) over the year. This fall was caused almost entirely by the capital depreciation of the endowment investments, which fell 18% to £21.4 million, resulting from the drop in financial markets between August 2008 and March 2009, before some recovery in the period up to the financial year end. The College takes the view that it is a long-term investor, and the portfolio of investments remains well-diversified, with a strong bias to equities. Since the year end, the endowment has recovered to around £23 million but patience will be required to see it back at the heights achieved in 2007. The broad benchmark used across the collegiate University would indicate that the endowment should be some £12 million higher for a college of our size in student members.

Investing in our Future

The largest financial investment in the year has, of course, been the construction of the new undergraduate building which is close to completion. This building will be an essential part of delivering our core educational purpose for many years to come. It is also a sound financial investment as the rents from students and from conference guests should deliver returns which are comparable to the returns we expect from our financial endowment – and probably less volatile too!

Our existing buildings have continued to benefit from investment. In the year, our capital and revenue expenditure on major works came to £710,000 (2008: £945,000) covering room refurbishments in Wolfson

West and Deneke East as well as more drainage for the whole College site. Our IT infrastructure saw further improvements: a new, modern, content-rich website which we hope will attract new students; an intranet which provides several self-help features for students, academics and support staff; and remote registration, which helps both new and returning students settle in more easily at the start of each academic year.

Our HR policies and procedures have become increasingly embedded in the way the support staff carry out their jobs. We have booked an assessor for our Investors in People accreditation in spring next year – this will be the support staff's equivalent of taking Finals!

Looking Back over the last Five Years

Elsewhere in the annual report, you will see how we have performed against our educational objectives over the last five years. So, how has this affected the state of the College's finances?

The new Pipe Partridge building has been funded from donations and a bank loan, with only a little help from the College's own cash resources. There has also been significant investment in refurbishing around 200 student rooms, improving fellows' accommodation, extending the library and building a new maintenance workshop as well, as in many other smaller, but important, areas. Most of these investments have been funded by use of the College's own "free" reserves which have fallen by around £3 million over the last five years. The "free reserves", of course, remain at a level which means that the College is safe from any unexpected events.

Over the last five years, the cumulative surplus on the Income & Expenditure Account, after excluding the effects of building and funding Pipe Partridge, is around £200k, compared to a cumulative target of £750k. This, lower than targeted, surplus has contributed to the reduction in "free reserves".

Looking Ahead over the next Five Years

The current level of the College's "free reserves" means that the College will have to reduce significantly its capital improvements expenditure over the next few years.

There are also pressures on major sources of income which mean that it will be even more difficult to achieve our target surplus. The state of the UK economy and public finances makes public spending cuts inevitable, and we know higher education will be particularly badly affected. The College's

Year ended
31st July 2009

2009 2008
restated
£ '000 £ '000

INCOME

Academic fees and tuition income	2,482	2,504
Residential income from College members	1,670	1,553
Grants and donations	494	922
Endowment return and interest receivable	1,111	1,140
Conference and function income	750	820
Other income	192	136

Total income **6,699** **7,075**

EXPENDITURE

Academic costs	2,241	2,062
Residential, catering and conferences	2,031	1,882
Premises and equipment	1,150	1,066
College administration	665	608
Fundraising	285	239
Endowment management	-	93
Other expenditure	155	163

Total expenditure **6,527** **6,109**

Surplus for the Year **172** **966**

(Depreciation) of endowment asset investments	(4,177)	(3,399)
New endowments received	45	728
(Net endowment return released to income)	(578)	(661)
New deferred capital for building projects	485	1,649
(Depreciation) of fixed asset investment	-	(170)

Total recognised (losses) gains for the year **(4,053)** **(887)**

Opening fund balances 37,034 37,921

Closing fund balances **32,981** **37,034**

of which:

Endowment	21,417	26,216
Deferred capital	2,205	1,720
Reserves	9,359	9,098

endowment income will also be lower than it has been over the last three years, with little prospect of a sharp recovery.

We do have the opportunity presented by the Pipe Partridge building to enhance our student experience and help attract excellent students. The building also enables us to grow our conference business significantly and contribute financially even more.

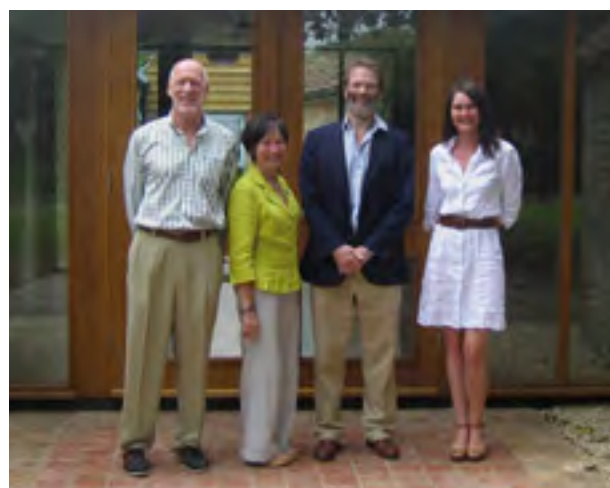
All in all, the College will be more cautious in its expenditure plans over the next few years. But we are well positioned to address the challenges and exploit the opportunities and so to ensure that tutorial teaching of undergraduates continues to be the bedrock in meeting our core educational goals.

The WildCRU Panthers

Because of LMH's close affiliation with the WildCRU – the Zoology Department's Wildlife Conservation Research Unit – the College is close to the centre of Oxford's trail-blazing work in wildlife conservation. A major milestone this year – and one attracting international excitement – is WildCRU's launch of a new Postgraduate Diploma in International Wildlife Conservation Practice.

The diploma is aimed at enhancing the field skills of budding conservation biologists in developing countries, supporting wildlife conservation efforts around the globe. The development and delivery of the diploma has been funded by a generous donation to WildCRU from Thomas and Dafna Kaplan. Tom's fascination is big cats of the genus *Panthera*, and indeed he has created the Panthera Foundation to foster their conservation globally. In honour of this feline association, the new diploma students are known widely as *The WildCRU Panthers!* LMH is at the heart of their lives because College has welcomed them as members of the Middle Common Room – the Panthers get to experience a taste of College life, and LMH's community is enriched to the tune, this year alone, of seven new nationalities!

David Macdonald, LMH Fellow and Oxford's first Professor of Wildlife Conservation, who founded the WildCRU in 1986, conceived the new diploma course to meet the need of training local conservationists to work at a high standard in their own countries. Transforming the diploma from a dream to a reality was a long and arduous journey. David, greatly aided by WildCRU's Dr Lucy Tallents who now teaches the course, nurtured the proposal through 13 separate university committees, aided by a partnership with the Continuing Professional Development Unit (CPD) of the University's Department for Continuing Education (DCE). »



Professor Macdonald and Project Manager Dr Dawn Burnham, showing the new training centre to Terry Collins, Trustee of the Tubney Trust, and his wife Janet. The Tubney Trust made the original gift of these building to support the work of the WildCRU in perpetuity.



David Macdonald,
Professor of Wildlife Conservation

» With the new diploma accredited – and last year a pilot course attracted students from Albania, Bolivia, China, Iran and Tanzania – David Macdonald’s next idea was to build a customised training centre for the WildCRU Panthers. The WildCRU is based at Tubney House, where they have created a hub for UK and international conservation, thanks to the generosity of the Tubney Trust. The better part of 60 conservation scientists are based there, about half are engaged in projects overseas, and half in the UK (many in the Upper Thames catchment). In the Unit’s grounds at Tubney, David’s vision was to convert two derelict but listed farm buildings into a new dormitory and training centre. Formal work on the project began on 5th November 2008, under the project management of WildCRU’s Dr Dawn Burnham, and on the 7th August, Tom and Dafna Kaplan came to cut the ribbon on the new Panthera Buildings, joined by Frances Lannon, with the Panthers happily ensconced within a new, green, sustainable purpose-built centre.

The diploma is taught by WildCRU’s Dr Lucy Tallents – whose has first hand experience of remote fieldwork, having gained her own doctorate on Ethiopian wolves - and aims to equip these early-career conservationists with the practical skills and theoretical understanding to enable them to contribute effectively to conservation research and action in the developing world. The Panthers are an extraordinary group with vivid stories to tell that enrich the WildCRU community, but although they may

have years of experience they generally lack expertise in designing research or conservation interventions, or in analysing their data and interpreting the results. They learn how to use sector-specific software and equipment, such as Geographical Information Systems (GIS) and radio-tracking equipment. As well as equipping them with a wide range of field and computer skills, the intensive teaching is designed to get them thinking critically about the work that they do, and how they can improve their practice to enhance the conservation prospects of the endangered species they work with.

The seven current WildCRU Panthers are from far-flung countries, and most work with their national parks authorities or with local or international conservation charities such as WWF and the Durrell Wildlife Trust. They are:

- Hemanta Kafley, a ranger from Nepal’s National Parks Department who is responsible for tiger, rhino and crocodile monitoring and conservation activities and works in collaboration with WWF.
- Alfredo Romero Muñoz, a self-confessed cat fanatic from Bolivia who has worked with the US-based Wildlife Conservation Society and WWF on jaguar and puma surveys, and would like to devote his life to cat conservation in South America.
- Karma Jigme, a forestry officer in Bhutan’s Nature Conservation Department, and a rising star who got himself moved from another department into nature conservation because he’s passionate about protecting wildlife species and their habitats.
- Antony Kasanga, a Maasai warrior who used to kill lions and now works to protect them as assistant director of the Lion Guardians in Kenya, monitoring lions and educating local Maasai on how to live in harmony with them.
- Herizo Andrianandrasana, a Madagascan wildlife ecologist who is employed by the Durrell Wildlife Trust to manage ecological monitoring and wildlife education programmes throughout Madagascar.
- Nakedi Mputla, a South African employee of the African Wildlife Trust who is in responsible for developing leopard monitoring and research in Kruger National Park, with particular reference to the impact of bovine TB on the lion and leopard populations.
- Godfrey Mtare, a Zimbabwean park ecologist working in Hwange National Park, who is involved in lion conservation and monitoring activities, and monitoring trophy hunting and its impacts on wildlife in the park and surrounding areas.



David Macdonald, who is also Chairman of the UK’s Darwin Initiative, opening the Darwin Lecture which was given at London’s Natural History Museum by Secretary of State Hilary Benn to celebrate Darwin’s 200th birthday

conservation because he’s passionate about protecting wildlife species and their habitats.

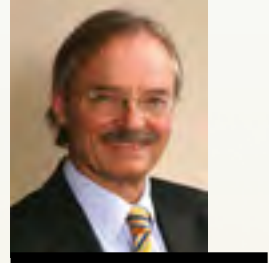


Dafna and Tom Kaplan cutting the ribbon to open the Panthera Buildings at the WildCRU’s centre at Tubney House, which is henceforth proudly known as the Recanati-Kaplan Centre.

Although still in its first formal year, the reputation of the course has spread far and wide. As recruitment for the 2009-10 intake begins, WildCRU fielded queries from over 100 interested candidates, and has already received 45 full applications from places Brazil to Burma to Borneo. Many of these are people who will never have left their country before, and could only have dreamt of the opportunity to study at Oxford. In terms of opening access to Oxford, LMH, along with the WildCRU will rejoice in welcoming the next ‘litter’ of Panthers!

More details on www.wildcru.org

Alumni Relations



Peter Watson,
Development Director

The year has seen a very full programme of events in College and elsewhere organised by the alumni team, with a total attendance of over 1,700 alumni, parents, friends, Fellows, students and staff. Some of the events have included enjoyable, if at times somewhat precarious, visits to the building site of the undergraduate building. The most recent event was the LMHA reception at the Reform Club in London in November at which biographer Anne Chisholm (1959 History) gave a splendid talk to a capacity audience of 120 alumni and friends. Ann Leslie was another of our authors, in a different genre, who gave us a vivid account, as guest speaker at the London Dinner, of her career in journalism from her LMH days onwards. We were also pleased to give support and encouragement to the Boat Club, currently going through a buoyant phase, with the first dinner in College for several years taking place on the Saturday of Eights Week. Many alumni attended, and we were particularly delighted to welcome 8 members of the women's boat from 1969, who argued and won the case for the women's Colleges to compete in Eights week, and gained additional fame with their appearance on the cover of Private Eye. The events programme also included a lunch for the 1969 year on the 40th anniversary of their matriculation. We are very happy to facilitate lunches of this nature on a Saturday when it may be easier for people to get to Oxford than during the week. We will have a splendid new dining facility in the Pipe Partridge Building, so I hope different years will take the opportunity to return and see recent major developments here at LMH, while catching up with each other over a delicious lunch. Contact the office development@lmh.ox.ac.uk to start the arrangements.

As always I must put on record our thanks to the LMHA Committee and other volunteers who are so forthcoming when asked to give their time, share their expertise, or provide venues and speakers for meetings and receptions, for the



Professor Vincent Gillespie introduces Professor Sue Powell to speak about Lady Margaret Beaufort at the Gaudy.

benefit of the College, fellow alumni and students. Thank you everyone.

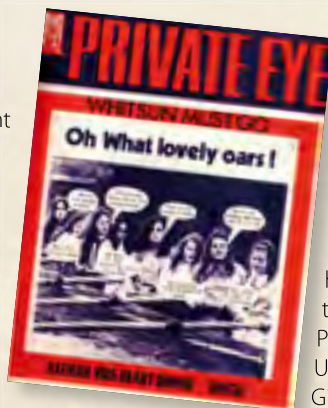
The Brown Book team has worked overtime this year, under the editorship of Carolyn Carr, to produce two Brown Books – the regular excellent book in the spring and a special edition to commemorate the 500th anniversary of the death of Lady Margaret Beaufort, as mentioned by the Principal in her report. We are very grateful to our academic contributors Professor Sue Powell, Salford University, Professor Vincent Gillespie, LMH, and Professor George Pattison, Christ Church, for

their permission to publish the text of talks each given at LMH during the anniversary year, and to LMHA President Mary Haynes

for a fascinating piece of research about the images of Lady Margaret.

There will be a new face in the Development Office in 2010. Gus Bridges will be joining us in January as our Database Officer, replacing Kary Kelly (1999 History) who has moved on to continue her Development career in the University's central Development Office. Amongst other things, Kary was responsible for translating the *Click for Bricks* idea into a fundraising website. One of the tasks that Gus will have is to plan the move later in the year to a new database serving all the Oxford Colleges. We intend as well to improve the interactive part of the LMH alumni web pages to make communication easier. We also now have a Facebook presence.

Finally I want to record my sincere thanks to my colleagues in the Office Maya Evans and Carrie Fehr, for their hard work throughout the year and the tremendous contribution they make on behalf of the College and its alumni.



(above) Members of the 1969 LMHBC boat at the Eights Week Dinner and (left) on the cover of Private Eye.



1969 reunion lunch in September

Fundraising Activity 2008-09

New gifts and firm pledges made during the year ended 31 July 2009 totalled £2,622,957 (2007-08: £2,942,595). Cash received and banked for the same period was £1,023,967 (2007-08: £3,299,082). These are the two conventional measures used to analyse fundraising income and activity. The former recognises the effort expended in the period and includes promises for payment in future periods newly made in the year under review, while the second relates to the all important cash actually received and used or invested for the benefit of the College's educational mission. This figure may be traced in the financial accounts (p.13), where it comprises the items 'grants and donations £494,000', 'New endowments received £45,000', and 'New deferred capital for building projects £485,000'

In fundraising as in every other financial sphere of activity it was an extremely difficult year. The fall in cash income shows this although the pledged amount held up well, thanks largely to the munificent pledge from The Clore Duffield Foundation.

The new building programme remained the priority fundraising objective this year and in taking possession of the completed and newly named Pipe Partridge Building we have reached a major milestone in our New Era Campaign. In just under 2½ years since the Campaign was launched at Christie's in June 2007 the total of gifts and pledges for the project has now reached £6.6 million, from 850 donors. This remarkable degree of generosity, mostly from LMH Alumni, has, with additional borrowed funds, allowed us to complete the first phase. Some £2.2 million of the sums raised to date is earmarked for the second phase – the New Graduate Centre, the new Porters Lodge, containing between them a further 40 new study bedrooms, and the new front entrance quadrangle. We need



Summer Serenade Guests applaud the performance in July

1. Donations from Alumni

Decade of Matriculation	No. Donors	% Decade Giving	Gross Amount	Average Gift
1930s	21	20%	£15,139	£721
1940s	109	31%	£47,927	£440
1950s	130	26%	£57,425	£442
1960s	160	21%	£122,109	£763
1970s	176	17%	£127,027	£721
1980s	140	13%	£162,173	£1,158
1990s	107	8%	£19,008	£178
2000s	49	4%	£3,458	£71
Totals	892	13.7%	£554,266	£621

2. Donations from Non Alumni

Type	No. Donors	% Decade Giving	Gross Amount	Average Gift
Individuals	90		£74,471	£827
Organizations	1		£10	£10
Trusts and Foundations	6		£27,029	£4,505
Totals	97		£101,511	

3. Legacies received

	4		£330,000	
--	---	--	----------	--

4. Other Income

(royalties, ticket sales, merchandise, etc)			£38,190	
Total Development Income			£1,023,967	



Peter Watson,
Development Director

£5 million more to complete this phase. The economic climate continues to be difficult, but now we can see and take pride in the completed undergraduate building, I am confident that everyone with a connection to LMH will want to help us towards completing the second phase. The support to date has been truly magnificent.

Biggest gift in LMH History

We were delighted to announce in October a donation of £1.75 million from the Clore Duffield Foundation to support the building of a new Graduate Centre which will be named the Clore Graduate Centre. It is the largest gift in the history of the College and we are immensely grateful to Dame Vivien Duffield and the Trustees of the Foundation. The gift is part of a £5.1 million donation from the Foundation to the Campaign for the University of Oxford. As well as supporting LMH, the Foundation pledged donations for graduate scholarships in the Humanities, for the Ashmolean Museum, the Institute for Ageing, and the Library of the University Church.

An innovation this year was the Click for Bricks website which has provided a fun way of donating on-line and through which £19,500 has been raised. We are most grateful to Advisory Council member Annette Haworth for this super idea, which has encouraged many first-time donations. Among the keenest supporters have been the Fellows and the staff of the College, in greater proportion than in any other College – which we know for a fact from the benchmarking data collected by the university. It is heartening to see other stakeholders joining with our alumni in demonstrating their support.

One other significant fundraising activity was the Summer Serenade, on July 8th which grossed £42,000 from ticket sales, sponsorship, donations and auction proceeds. The net contribution to building funds was £15,000. 170 guests attended the black-tie reception with tours of the building site, followed by the concert, dinner and auction. Events of this nature in other parts of the charity sector have had problems this year, and so we are tremendously grateful to the members of the Advisory Council for confidently pushing ahead with the event, and also for taking the lead in buying tables, sponsoring the Classical Opera Company, and in giving and bidding for auction prizes, - and especially to Diana Quick and Bill Nighy for the readings.

Performance

How well are we doing in attracting philanthropic support? I am sometimes asked this by alumni and supporters, and of course I ask it myself. Well in one sense, extremely well: in the five years that I have been reporting fundraising performance in detail in the Annual Report, the total income received from donations is £7.95 million, an annual average of £1.59 million. The goal set in the strategic plan for the period 2005-2009 was £850k per annum and so we have well exceeded that. On another measure the number of alumni donors last year was the highest ever at 892 which is again very good news. This represents 13.7% of the 6,500 alumni for whom we have an address, but the ratio is slightly down on the previous year's figure. See table.

Year	Number of Donors	Participation Rate
2008-9	892	13.7%
2007-8	870	14.3%
2006-7	649	10.5%
2005-6	781	13%
2004-5	698	12%

This puts us below the 15% average giving ratio of the mixed Oxford Colleges. And of course we are a long way from the giving levels in the USA where 40% to 50% of alumni populations of Ivy League universities donate regularly. However it is interesting to note that several Oxford Colleges are able to report

giving percentages in the high teens and twenties, and two are over 30%. So there is a challenge ahead of us. Senior members who matriculated in the 1970s, 1980s, 1990s and 2000s, we particularly need your support!

Future

In preparing the College's strategic plan for the next 5 years, our task is to state our fundraising goals very clearly and explain cogently why we need support in a world where competition for philanthropic giving will become more intense, and where indebted governments are likely to seek budget cuts in all sectors, including higher education. Our targets for fundraising will be set higher and be more ambitious than in the last plan, to meet the needs of the College.

The Development Programme exists solely to support the academic objectives of the College, in providing the very best facilities for our students; in ensuring where necessary that they have the financial resources needed to study here; and in sustaining the tutorial system by supporting the Fellowship. Our alumni have demonstrated their support for these in a most generous manner, and I sincerely hope that we may look forward to a continuing and indeed increasing level of commitment.



Phone campaign 2009 – learning how to do it and doing it for real (insert)

Visitor, Principal and Fellows 2008-09

Governance

The Governing Body of Lady Margaret Hall comprises the Principal and Fellows. It is constituted and regulated in accordance with the College Statutes, which are made from time to time by order of Her Majesty in Council in accordance with the Royal Charter of 17 March 1926, and the Universities of Oxford and Cambridge Act 1923. The Governing Body has responsibility for the direction and management of the affairs of the College.

Visitor

The Rt Hon the Lord Patten of Barnes, CH, MA, DCL,
The Chancellor of the University

Principal

Frances Lannon, MA, DPhil,
FRHistS

Fellows

Susan Lesley Freda Wollenberg, MA DPhil Oxf,
Tutor in Music, Reader in Music

Gillian Rosemary Peele, BA Durh,
MA MPhil Oxf, FRHistS, Tutor in
Politics, CUF Lecturer

John Day, MA, PhD Camb, DD Oxf,
Tutor in Theology, Professor of Old
Testament Studies, Dean of Degrees

Nicholas Gower Shrimpton,
MA DPhil Oxf, Thelma Herring
Fellow, Tutor in English Literature,
CUF Lecturer, Vice-Principal

**Richard Henry Austen
Jenkyns**, MA MLitt Oxf, Winifred
Hicken Fellow, Tutor in Classics,
Professor of the Classical Tradition,
The Public Orator

Catherine Mary MacRobert, MA
DPhil Oxf, Anne Pennington Fellow,
Tutor in Russian, University Lecturer

David Whyte Macdonald, MA
DPhil DSc Oxf, Supernumerary
Fellow, Wildlife Research Fellow,
Professor of Wildlife Conservation,
A D White Professor (Cornell
University)

Clive Anthony Holmes, MA PhD
Camb, MA DPhil Oxf, FRHistS, Tutor
in History, CUF Lecturer, Fellow
Archivist, Fellow Librarian

**Christopher Willard George
Redman**, MB, BChir MA Camb, MA
Oxf, FRCP, FRCOG, Supernumerary
Fellow, Clinical Professor in Obstetric
Medicine

Penelope Jean Probert Smith,
MA PhD Camb, MA DPhil Oxf, Tutor
in Engineering and Computation,
Reader in Engineering

Christine Herta Gerrard,
MA DPhil Oxf, Barbara Scott Fellow,
Tutor in English, CUF Lecturer

David Gordon Andrews,
MA, PhD Camb, MA DPhil Oxf,
Tutor and Professor in Physics

Garry Kenneth Brown, MB, BS,
BSc(Med), PhD Sydney, MA Oxf,
FRCP, E P Abraham Fellow,
Tutor in Biochemistry

Robert Michael Adlington,
BSc, PhD Lond, MA Oxf, Tutor in
Organic Chemistry, University Lecturer

Helen Barr, MA MPhil DPhil Oxf,
Tutor in English, CUF Lecturer

The Rev'd Allan George Doig,
BA British Columbia, MA, PhD Camb,
MA DPhil Oxf, Chaplain, Tutor for
Graduates, Welfare Co-ordinator

Ann Christine Childs, BSc, PhD
Birm, MA Oxf, PGCE, Supernumerary
Fellow, University Lecturer in
Educational Studies

Robert Charles Griffiths, BSc,
PhD Sydney, MA Oxf, FIMS, Tutor in
Applied Mathematics, Professor of
Mathematical Genetics

Brian Todd Huffman, BS Nebraska,
MA Oxf, MSc, PhD Purdue, Tutor in
Physics, University Lecturer

Adrian Leland Rees Thomas,
MA Oxf, PhD Lund, Tutor in Zoology,
Professor of Biomechanics, University
Lecturer

Ewan Gordon McKendrick, BCL,
MA Oxf, LLB Edin, Pro-Vice-Chancellor
(Research), Professorial Fellow,
Professor of English Private Law

Mary Fiona Spensley, BA Warw,
MA Oxf, PhD Open, Senior Tutor

Peter Donald Frank Watson,
MA Oxf, MBA INSEAD, Development
Director

Alain Viala, MA Oxf, D ès L Paris,
Professorial Fellow, Professor of French
Literature

Anant Bhikhu Parekh, MA DPhil
Oxf, Marjorie Ridley Fellow, Tutor in
Physiology and Medicine, Professor
of Physiology

Michael George Broers,
MA St And, MA DPhil Oxf, Tutor in
Modern History, CUF Lecturer

**Vincent Anthony Gillespie,
Shields**, BA MA Bowling Green,
MA PhD Cornell, Tutor in Philosophy,
Professor of Classical Philosophy, CUF
Lecturer, Dean

Marie-Chantal Killeen, MA Oxf,
PhD Brown, Rhodes Trust D M Stewart
Fellow in Modern Languages, Tutor in
French, CUF Lecturer

**Christopher John Ignatius
Shields**, BA MA Bowling Green,
MA PhD Cornell, Tutor in Philosophy,
Professor of Classical Philosophy, CUF
Lecturer, Dean

Dana Lynn Brown, BA New
Brunswick, MA PhD Massachusetts,
MPhil Oxf, Clore Fellow, Tutor in
Management Studies, University
Lecturer

Michael Monoyios, BSc Lond, MA
Oxf, PhD Lond, Tutor in Mathematics,
University Lecturer

Nicholas Peter Hankins, MA Camb;
PhD Oklahoma, CEng, PGCAP, Tutor in
Engineering, University Lecturer

Joanne Louise Begbie, BSc Leeds,
MA Oxf, PhD Lond, Marjorie Ridley
Fellow, Tutor in Medicine, University
Lecturer

Antony Galione, MA, PhD Camb,
MA Oxf, Professorial Fellow, Chair of
Pharmacology

Xon Maria de Ros, MA DPhil Oxf,
Tutor in Spanish, University Lecturer

José Manuel Goicoechea, BSc
Zaragoza Spain, MA Oxf, PhD Bath,
Tutor in Inorganic Chemistry,
University Lecturer

Gunther Martin, Staatsexamen
Munich, DPhil Oxf, Domus Fellow in
Classics

Jochen Koenigsmann, BA Oxf, PhD
Konstanz, Tutor in Pure Mathematics,
University Lecturer

Sionaidh Douglas-Scott, BA LLM
Lond, MA Oxf, Tutor in Jurisprudence,
CUF Lecturer

Richard Francis Sommers, MA Oxf,
Treasurer

Christine Wong, MA PhD California,
Supernumerary Fellow, Senior Fellow
in Chinese Studies

Li He, MSc Beijing, PhD Camb,
Professorial Fellow, Rolls-Royce/Royal
Academy of Engineering Professor
of Computational Aerothermal
Engineering

Nigel Arden, MB BS MSc MD Lond,
MRCP, Supernumerary Fellow,
Clinical Reader in Musculoskeletal
Sciences

Judith Mank, BA University of
Florida, MS Pennsylvania State
University, PhD University of Georgia,
Tutor in Biological Sciences

Nicholas Fawcett, BA Camb,
MPhil DPhil Oxf, Domus Fellow in
Economics

Honorary Fellows

Sheila Jeanne Browne, CB, MA Oxf

**Elizabeth Leila Millicent
Chilver**, MA Oxf

**Professor Howard Chandler
Robbins Landon**, DMus Boston and
Belf (died 20 Nov 2009)

Georgina Mary Moore, MA Oxf

Helen Mary Warnock, Baroness
Warnock of Weeke in the City of
Winchester, DBE, BPhil, MA Oxf

Jennifer Iris Rachel Montagu,
BA Oxf, PhD Lond, FBA

Romila Thapar, BA PhD Lond,
BA Punjab, Hon DLitt Oxf

**Dame Margaret Turner-
Warwick**, DBE, PhD Lond, DM, Hon
DSc Oxf, FRACP, FACP, FFOM, FRCP

**Dame Barbara Jean Lyon
Mills**, DBE, QC, MA Oxf

Dame Vivien Louise Duffield,
DBE, MA Oxf

**Juliet Jeanne d'Auvergne
Campbell**, CMG, MA Oxf

**Dame Pauline Neville
Jones**, DCMG, BA Oxf, FRSA

**Sarah Elizabeth Mary
Hogg**, Baroness Hogg of
Kettlethorpe in the County of
Lincolnshire, BA Oxf, Hon MA Open

Sujata Manohar, MA Oxf, LLD East
Ang

Douglas Gray, MA Oxf,
Hon LitD Wellington, FBA

Mary Longstaff Jacobus,
MA DPhil Oxf

Marina Sarah Warner, MA, Hon
DLitt Oxf, FRSL

Sir Brian James Proetel Fall,
GCVO, KCMG, LLM Michigan, MA Oxf

Anne Mary Hudson,
MA DPhil Oxf, FBA, FRHistS

Barbara Elaine Harrell-Bond,
MLitt DPhil Oxf

**Elizabeth Lydia Manningham-
Buller**, DCB, BA Oxf

General John de Castelain,
OC, CMM, CH

Dame Juliet Wheldon, DCB, QC

Lady Antonia Fraser,
CBE, MA Oxf, FRSL

Examination Results 2009

Fiona MacCarthy, MA Oxf
Christopher Martin Dobson, MA DPhil Oxf, CChem, FRSC, FRS
Dame Sonia Rosemary Susan Proudman, DBE, MA Oxf
Dame Elizabeth Ann Slade, DBE, MA Oxf

Emeritus Fellows

Susan Mary Grace Reynolds, MA Oxf, FBA, FRHistS
Elizabeth Georgina Whitestone Mackenzie, MA Oxf
Margery Grace Ord, MA, DSc Oxf, PhD Lond
Anthony Peter Dyson, MEd Manc, MA Oxf
Margaret Rosemary Matthews, MA DM Oxf
Pamela Currie, MA Oxf
Peter Richard Jack Hainsworth, MA Oxf
Martin Christopher Birch, MA DPhil Oxf
Alison Frances Brading, MA Oxf, PhD Brist
Robert Gordon Lord, MA PhD Camb, MA DPhil Oxf
Anthony David Smith, MA DPhil Oxf
Gabrielle Anne Stoy, MA DPhil Oxf
Jeffrey William Sanders, BSc Monash, MA Oxf PhD ANU
Jane Mary Day, BPhil MA Oxf
Ann Sheila Kennedy, MA Oxf
Simon Rowland Francis Price, MA DPhil Oxf

Foundation Fellows

Anna Margaret McNair Scott, MA Lond, MA Oxf
Neil Simpkins, BA Oxf, MBA Harvard

Research Fellows

Andrew John Loveridge, BSc Cape Town, MA DPhil Oxf, Wildlife Conservation, Kaplan
Claudio Sillero-Zubiri, DPhil Oxf, Wildlife Conservation, Bill Travers
Simon Prince, MPhil PhD Camb, Modern History, Stuart and Eleanor Rigold
Gianluca Gregori, MS Bologna, MS PhD Minnesota, Talbot/RCUK Fellow in Physics

Philip Biggin, MA DPhil Oxf, RCUK Fellow in Biochemistry
Lee Jones, BA Warw, MPhil Oxf, Rose Fellow in International Relations

Honorary Research Fellows

David Michael Barnes, QC, MA Oxf
Catherine Joy Slater, MA DPhil Oxf
Andrew Stephen Burrows, QC, BCL MA Oxf, LLM Harvard
Conor Quigley, QC, LLB Lond, MA Oxf
Anthony Christopher Davison, MA Oxf, PhD Lond
George Hart, DM Oxf, FRCP
Keith Michael Channon, BSc MB ChB Manc, MD, MRCP
Joanna Poulton, BA BM BCh DM Oxf, MRCP Lond
Colin James Davis, MA DPhil Oxf
Robert Hedley Stevens, BCL MA Oxf
Mark Hunter Robson, MA MPhil Oxf, CMath, CSci, FCMA, FSS, FIMA
James Patrick Carley, BA University of Victoria Canada, MA Dalhousie University Canada, PhD University of Toronto

Visiting Fellows

Don Howarth, MA DJur Harvard
Suzelle Smith, BPhil Oxf, JD Virginia Law School
Richard Kraut, BA Michigan, PhD Princeton, Starr Visiting Fellow

Administrative Officers

Domestic Bursar: Bartholomew Ashton, BSc Birm, MHCIMA
Accountant: Audrey Freeman, FCCA
Librarian: Roberta Staples, BA Capetown
Academic Administrator: Anke Probst, Dipl Economics FHS Cottbus, MBA Oxf Brookes
IT Manager: Ben Bridge, BSc Cheltenham & Gloucester College of FE, HND Cen Lancs

DPhil

Celso Barros, Sociology
Cissie Fu, Politics
Wan-Chen Huang, Physiology, Anatomy & Genetics
Elizabeth Jones, Pharmacology
Martin Luteran, Law
Marian McLachlan, Educational Studies
Maira Mukambayeva, Educational Studies
James Murdoch, Zoology
Gregory Rasmussen, Zoology
Benjamin Russell, Archaeology
Jonathan Stoekl, Oriental Studies
Stuart Sweeney, Modern History
Megumi Takiguchi, Medical Oncology
Amber Tomas, Statistics
Nicholas Vrousalis, Philosophy
Sarah Wood, English Language and Literature
Jing Yang, Sociology
Guoliang Ye, Engineering Science
Fiona Youngman, Modern History

Distinctions in Higher Degrees, Diplomas, and Certificates (Graduate)

Tanzilah Afzal, Medicine (Clinical)
Lucy Allen, MSt English Language & Literature
David Baker, MPhil English Studies (Medieval)
Sylvestre Burgos, MSc Mathematical & Computational Finance
Leon Grek, MSt in Greek and/or Latin Languages & Literature
Kassi Jackson, MPhil Greek and/or Roman History
Zhi Ling Florrine Ng, MSc Comparative Social Policy
Hao Ni, MSc Mathematical & Computational Finance
Paulina Preciado Lopez, MSc Applied Statistics
Maximilian Schlotte, Bachelor of Civil Law
Ian Smith, MPhil in Modern Middle Eastern Studies
James Warbrick-Smith, Medicine (Clinical)

First Class Honours in Finals (Undergraduate)

Samantha Henderson, Biochemistry
Sarah Rollauer, Biochemistry
Amy Butler, Chemistry (MChem)
Holly Bower, Engineering Science (MEng)
Luke Nash, Engineering Science (MEng)
Charles Ashbourne, English
Geoffrey Lim, English
Anna Perkins, English
Stephanie Farmer, Fine Art
Gabriella Cerroni, History
Alexandros Vlavianos, Mathematics
Chanika Chakarawet, Mathematics and Computer Science
Jacky Tam, Mathematics and Statistics
Charlie Bresslaw, Medicine (pre clinical)
William Cooper, Modern Languages (4yr)
Gareth Kristensen, Modern Languages (4yr)
Rachel McBrearty, Modern Languages (4yr)
Anthony Rowland, Modern Languages (4yr)
Jolyon Wellington, Physics (3yr)
Josephine Collyer, Physiological Sciences
Jonathan Ackroyd, PPE
Adam Barker, PPE
Louis Brooke, PPE
Marinella Capriati, PPE

Distinguished Performance in the First Public Examination (Undergraduate)

Prelim, Distinction
Helen Saunders, Biochemistry
Artiom Cernijenko, Chemistry
James Simmons, Chemistry
Tobias Sjolander, Chemistry
Simon Roach, Engineering Science
Louis-Jack Horton-Stephens, Fine Art
Karen Lee, History
Emma Turnbull, History
Matthew Nicholl, Physics (4yr) (MPhys)
Robert Williams, Physics (4yr) (MPhys)
Bridget Friday, Physiological Sciences
Honour Mods, First Class
John Williams, Classical Archaeology & Ancient History
Timothy Townsend, Mathematics
Ruth Peskett, Music

Scholars and Exhibitioners 2008-09

Prizes 2008-09

Graduate Scholars

Alvar Kangur,
DPhil Economics,
Gavin Cameron Scholar

David Baker,
MPhil English,
Anwyl Burton Scholar

Charlotte Potts,
DPhil Archaeology
Anwyl Burton Scholar

Laura Carlson,
DPhil History,
Anwyl Burton Scholar

Haiyan Huang,
DPhil Atmospheric,
Oceanic and Planetary
Physics, *Anwyl Burton Scholar*

James Reeve,
DPhil Organic Chemistry,
Anwyl Burton Scholar

Paul Taylor,
DPhil Biochemistry,
Isobel Powell Scholar

Michael Wagner,
DPhil History, *Canadian
Studies Scholar*

Leigh Biddlecombe,
MSt English,
Divisional Scholar

Charlene Wang,
MSc Modern Chinese Studies,
Divisional Scholar

Sylvestre Burgos,
MSc Mathematical and
Computational Finance,
Divisional Scholar

Ernesto Feliz,
DPhil Law,
Jex-Blake Scholar

Matthew Lloyd,
MSt Classical Archaeology,
Jex-Blake Scholar

**Graciela Iglesias
Rogers**, DPhil History,
Warr-Goodman Scholar

Shivani Bhalla,
DPhil Zoology,
Warr-Goodman Scholar

Undergraduate Scholars

Josephine Collyer,
Physiological Sciences,
Heron-Allen Scholar

Juliet Hewitt,
Biological Science,
Heron-Allen Scholar

Sarah Rollauer,
Biochemistry (MBiochem),
Heron-Allen Scholar

Shakira Adigun-Boaye,
Chemistry (MChem)

James Archer,
Music

Ian Ashcroft,
Engineering Science (MEng)

Marko Avramovic,
Engineering Science (MEng)

Samuel Baddeley,
Literae Humaniores

Awais Bajwa,
Engineering Science (MEng)

Tessa Baker,
Physics (MPhys)

Tahseen Basheer,
Chemistry (MChem)

Holly Bower,
Engineering Science

Emma Bowers, PPE

Charlotte Bresslaw,
Medicine (pre clinical)

Louis Brooke, PPE

Amy Butler,
Chemistry (MChem)

Lloyd Chapman,
Mathematics

Oliver Cohen,
Engineering Science (MEng)

Alexander Connery,
Literae Humaniores

Nicola Egan,
Chemistry (MChem)

Emma Fuller,
Physiological Sciences

Yuan Gao, Engineering
Science (MEng)

Donna Han, Fine Art

Thomas Harding,
Theology

Jonathan Komor,
English

Konrad Krawczyk,
Computer Science

Darja Kremel, PPP

Gareth Kristensen,
Modern Languages (4yr)

Carl Lerigo,
Mathematics

Geoffrey Lim,
English

Stephanie Ling,
Biochemistry

Richard Lupton,
Mathematics

Laura Mc Donald,
Law

Ryan McCrickerd,
Mathematics

Kirsty McNaught,
Engineering Science (MEng)

Ravi Mehta, Medicine

Junaid Mohammad,
Engineering Science (MEng)

Jonathan Monk, English

Luke Nash, Engineering
Science (MEng)

Joshua Olsson, History

William Partridge,
Chemistry (MChem)

Elizabeth Reeves,
Modern Languages (4yr)

Joanne Reilly,
Philosophy & Theology

Andrew Reza,
Chemistry

Matthew Schofield,
Mathematics

Kalpana Sivabalah,
Law

Chun Tam,
Mathematics

Wen Li Tan,
History

Johanna Thoma, PPE

Jodie Thompson,
Experimental Psychology

Alexander Vlavianos,
Mathematics

Katherine Wall,
History and Politics

James Warbrick-Smith,
Medicine (Fast-track)

Joanna Wilding,
English

Helen Wyatt,
Theology

Andrew Yu,
Engineering Science (MEng)

Jiexi Zhao,
Mathematics and Statistics

Gerard Lee,
Literae Humaniores,
Organ Scholar

Sarah Williams,
English, *Organ Scholar*

Amy Butler,
Chemistry (MChem),
Choral Scholar

George Chambers,
Music, *Choral Scholar*

Rachel White,
Chemistry (MChem),
Choral Scholar

Exhibitioners

Sunil Abraham,
Mathematics & Statistics

Robert Barham,
Mathematics

Adam Barker, PPE

Amy Baron,
European & Mid. Eastern
Languages (4yr)

Thomas Brady,
Music

Marinella Capriati,
PPE

Gabriella Ceroni,
History

Laetitia Cooke,
English & Modern
Languages (4yr)

William Cooper,
Modern Languages (4yr)

Oliver Cupit,
Biological Sciences

Emma Dickinson,
Modern Languages (4yr)

Michael Grogan, PPE

James Ibbetson-Price,
Modern Languages &
Linguistics

Daria Kuznetsova,
Biological Science

Imre Kvasznicza,
Mathematics &
Computer Science

Abigail Leadbeater,
Biological Science

Rachel McBrearty,
Modern Languages (4yr)

Lindsay McCormick,
Philosophy & Modern
Languages

Yasmin Mitha,
Literae Humaniores

James Mountain,
Physics (MPhys)

Simon Ooi, Mathematics

Rachel Richards,
Modern Languages (4yr)

Anthony Rowland,
Modern Languages (4yr)

Malcolm Skinner,
Physics (MPhys)

Andrew Spurr,
Physics (MPhys)

Gemma Truran,
Mathematics

Jolyon Wellington,
Physics (MPhys)

David Wolf,
Philosophy & Modern
Languages(4yr)

Alison Wright,
Biological Sciences

Rachel White,
Chemistry (MChem)

University Prizes

Maximilian Schlote,
BCL, *Peter Birks Prize*

Kassandra Jackson,
MPhil Greek & Roman
History, *Ancient History
Prize 2009*

Bridget Friday,
Physiological Sciences,
Gibbs Prize

Sarah Rollauer,
Biochemistry, *Gibbs Prize*

Artiom Cernijenko,
Chemistry, *Turbutt Prize*

College Prizes

Johanna Thoma, PPE,
*Gavin Cameron Memorial
Prize*

Rebecca O'Brien,
Philosophy & Theology,
Parker Prize

Andrew Erskine,
Classics & English, *Parker Prize*

Rena Tsang,
Jurisprudence, *Parker Prize*

Eleanor Sheppard,
History, *Wedgwood Prize*

William Gaisford,
English, *Thackeray Essay Prize*

Joanna Wilding,
English, *Janet Quigley Prize*

Stephanie Gartrell,
English, *Janet Quigley Prize*

Graduate Prizes (for academic achievement)

Anne-Marie Carstens,
DPhil Law

Suzanne Sheehy,
DPhil Particle Physics

Benjamin Russell,
DPhil Archaeology

Neale Harvey,
DPhil Physical
& Theoretical Chemistry

James Warbrick-Smith,
Fast-track Medicine

Book Prizes

Sunil Abraham,
Mathematics

Jonathan Ackroyd, PPE

James Archer,
Music

Deborah Arianayagam,
Medicine

Ian Ashcroft,
Engineering Science

Awais Bajwa,
Engineering Science

Thomas Besant,
Modern Languages

Fellows' Key Publications

Anna Blakemore,
Music

Julia Buckingham,
Modern Languages

Samuel Burt, PPE

Alison Bush,
Modern Languages

Artiom Cernijenko,
Chemistry

Gabriella Ceroni,
History

Ronald Cheng,
Engineering Science

Eilyn Chong,
Mathematics & Statistics

Oliver Cohen,
Engineering Science

Timothee Defaramond,
PPE

Emma Dickinson,
Modern Languages

Bridget Friday,
Physiological Sciences

Grace Gould, PPE

Rachel Greener, PPE

Sophie Harris,
English

Nathalie Higgs,
Chemistry

Owen John,
Jurisprudence with LSE

Alice Kaye,
Engineering Science

Thomas Kemp,
Mathematics & Philosophy

Jonathan Komor,
English

Darja Kremel, PPP

Karen Lee,
History

Sam Lysons,
Engineering Science

Alice Maslin,
Music

Ryan McCrickerd,
Mathematics

Kirsty McNaught,
Engineering Science

Junaid Mohammad,
Engineering Science

Jon Monk,
English

Chirag Morjaria,
Engineering Science

James Mountain,
Physics

Sarah Murphy,
History

Matthew Nicholl,
Physics

Joshua Owens,
MHP

Sanna Parikka,
History

Adam Parker, PPE

Melissa Raybould,
Chemistry

Miriam Raynor,
Physiological Sciences

Andrew Reza,
Chemistry

Richard Seddon,
Engineering Science

Alan She,
Physics

Joe Shields,
Physics

James Simmons,
Chemistry

Lavinia Singer,
English

Tobias Sjolander,
Chemistry

Emma Taylor-Jones,
Experimental Psychology

Jodie Thompson,
Experimental Psychology

Timothy Townsend,
Mathematics

Gemma Turan,
Mathematics

Emma Turnbull,
History

Catherine Vickers,
Experimental Psychology

Joanna Wilding,
English

Robert Williams,
Physics

Emily Wright,
Chemistry

Weimei Xu,
Mathematics

Sam Yoshua,
Physics

Other Awards

Shivani Bhalla,
DPhil Zoology, *SCB Africa
Section Young Women
Conservation Biologists
Award*

Matteo Turilli,
DPhil Computer Science,
*2009 Goldberg Award by
Carnegie Mellon University*

Robert Adlington, 'Studies towards the synthesis of coprinolone, 1⁶-coprinolone, and radulone A via an anionic electrocyclization cascade', (with Andrew L Lawrence, and Victor Lee), (2008), *Synlett* (14), pp.2087-2088

'A synthetic approach to the communesins', (with Jonathan H George), (2008), *Synlett* (14), pp.2093-2096

'Structural Studies on the Reaction of Isopenicillin N Synthase with a Sterically Demanding Depsipeptide Substrate Analogue', (with Wei Ge, Ian J Clifton, Annaleise R Howard-Jones, Jeanette E Stok, Jack E Baldwin, and Peter J Rutledge), (2009), *ChemBioChem* 10(12), pp.2025-2031

Nigel Arden, 'Defining incident radiographic hip OA for epidemiological studies in women', (with N Lane, N Parimi, M K Javadi, L Lui, M Hochberg, and M Nevitt), (2009), *Arthritis & Rheumatism* 60 (4), pp.1052-9

'Changes in proximal femoral mineral geometry precede the onset of radiographic hip osteoarthritis: The study of osteoporotic fractures', (with M K Javadi, N E Lane, D C Mackey, L Y Lui, T J Beck, M C Hochberg, and M C Nevitt), (2009), *Arthritis & Rheumatism* 60 (7), pp.2028-36

'Effective measurement of knee alignment using AP knee radiographs', (with A N Colebatch, D J Hart, G Zhai, F M Williams, and T D Spector), (2009), *The Knee* 16, pp.42-45

'The Hertfordshire Cohort Study Group. Volumetric bone mineral density of the tibia is not increased in subjects with radiographic knee osteoarthritis', (with M Abdin-Mohamed, K Jameson, E M Dennison, and C Cooper), (2009), *Osteoarthritis & Cartilage* 17, pp.174-7

'A randomised controlled trial of tidal irrigation vs corticosteroid injection in knee osteoarthritis: the KIVIS Study', (with I C Reading, K M Jordan, L Thomas, H Platten, A Hassan, and J Ledingham), (2008), *Osteoarthritis Cartilage* 16, pp.733-739

'Musculoskeletal ultrasound imaging of the plantar forefoot in patients with rheumatoid arthritis: inter-observer agreement between a podiatrist and a radiologist', (with C J Bowen, K Dewbury, M Sampson, S Sawyer, J Burridge, C J Edwards, et al), (2008), *J Foot Ankle Res* 1:5

'A view on the pathogenesis of osteoarthritis from the shoulders of giants', (with F Birrell), (2008), *Rheumatology* (Oxford) 47, pp.1263-1264

Helen Barr, *The Digby Poems: A Critical Edition of the Lyrics*, (2009), Exeter, University of Exeter Press

'Contemporary Events' in *A Concise Companion to Middle English 1100-1500* (2009), Marilyn Corrie (ed.), Oxford, Blackwells

'The Pearl Poet' in *The Companion to the Bible* (2009), Rebecca Lemon, et al (eds.), Oxford, Blackwells

Philip Biggin 'The 3-dimensional structure of a hepatitis C virus p7 ion channel by electron microscopy', (with P Luik, C Chew, J Aittoniemi, J Chang, P Jr Wentworth, R A Dwek, C Vénien-Bryan, and N Zitzmann), (2009), *Proc Natl Acad Sci U S A* Jul 9, Epub

'Selectivity and cooperativity of modulatory ions in a neurotransmitter receptor', (with R Vijayan,

A J Plested, and M L Mayer), (2009), *Biophys J*. 96: 1751-60

'Determination of pore-lining residues in the hepatitis C virus p7 protein', (with C F Chew, R Vijayan, J Chang, and N Zitzmann), (2009), *Biophys J*. 96 L10-2

'Distribution and dynamics of adamantanes in a lipid bilayer', (with C F Chew, and A Guy), (2008), *Biophys J*. 95:5627-36

'A steroid in a lipid bilayer: localization, orientation, and energetics', (with R Vijayan) (2008), *Biophys J*. 2008 95:L45-7

Michael Broers, 'The Napoleonic Empire', in *The Bee and the Eagle. Napoleonic France and the End of the Holy Roman Empire, 1806*, (2009), Alan Forrest and Peter Wilson (eds.), Basingstoke, Palgrave Macmillan, pp.65-82

'La Grande Amr ee of 1805: From the Great Ocean to the Great Continent' in *A Great & Glorious Victory. New Perspectives on the Battle of Trafalgar*, (2008), Richard Harding (ed.), Barnsley, Seaforth Publishing, pp.90-100

'Une Turner Thesis   l'europ enne? Le r le de la fronti re dans l'Europe napol onienne', (2009), *Napoleonica. La revue* 5, pp.2-12

Garry Brown, 'Mitochondrial arginyl-tRNA synthetase deficiency', (with R M Brown, J Rankin, J Patel, M Quinn, and W Dobyns), (2009), *Molecular Genetics and Metabolism* 98: 91

John Day, *Society for Old Testament Study Book List 2009* (ed.), London, Sage

'Human Sacrifice, Old Testament', in *Religion Past and Present* Vol. 6, (2009), D S Browning, B Janowski and E J ngel (eds.), Leiden, Brill. p319

'Molech', in *The New Interpreter's Dictionary of the Bible* Vol. 4, (2009), K D Sakenfeld (ed.), Nashville, Abingdon Press, pp.129-30

Antony Galione, 'Ca²⁺ signaling occurs via second messenger release from intraorganellar synthesis sites', (with L C Davis, A J Morgan, M Ruas, J L Wong, R M Graeff, A J Poustka, H C Lee, G M Wessel, and J Parrington), (2008), *Curr. Biol.* 18, pp.1612-1618

'Niemann-Pick disease type C1 is a sphingosine storage disease that causes deregulation of lysosomal calcium', (with E Lloyd-Evans, A J Morgan, X He, D A Smith, E Elliot-Smith, D J Sillence, G C Churchill, E H Schuchman, and F M Platt), (2008), *Nature Medicine* 14, pp.1247-1255

Brailoiu, G. C., Brailoiu, E., Parkesh, R., Galione, A., Churchill, G. C., Patel, S., and Dun, N. J., NAADP-mediated channel 'chatter' in neurons of the rat medulla oblongata. *Biochem. J.* 419, 91-97 (2009).

'Identification of a chemical probe for NAADP by virtual screening', (with E Naylor, A Arredouani, S R Vasudevan, A M Lewis, R Parkesh, A Mizote, D Rosen, J M Thomas, M Izumi, A Ganesan, and G C Churchill), (2009), *Nature Chem. Biol.* 5, pp.220-226

'NAADP mobilizes calcium from acidic organelles through two-pore channels', (with P J Calcraft, M Ruas, Z Pan, X Cheng, A Arredouani, X Hao, J Tang, K Rietdorf, L Teboul, K T Chuang, P Lin, R Xiao, C Wang, Y Zhu, Y Lin, C N Wyatt, J Parrington, J Ma, A M Evans, and M X Zhu), (2009), *Nature* 459, pp.596-600

'The acid test: the discovery of two-pore channels (TPCs) as NAADP-gated endolysosomal Ca²⁺ release channels', (with A M Evans, J Ma, J Parrington, A Arredouani, X Cheng, and M X Zhu, (2009), *Pflugers Arch.* 458, pp.869-876

José Goicoechea, 'Synthesis and Characterization of Alkali-Metal Salts of 2,2'- and 2,4'-Bipyridyl Radicals and Dianions', (with Edward Gore-Randall, Mark Irwin, and Mark S Denning), (2009), *Inorganic Chemistry* 48, pp.8304-8316

'Synthesis and Isolation of [Fe@Ge10]3-: A Pentagonal Prismatic Zintl Ion Cage Encapsulating an Interstitial Iron Atom', (with Binbin Zhou, Mark S Denning, and Deborah L Kays), (2009), *Journal of the American Chemical Society* 131, pp.2802-2803

'Coupling Reactions of Functionalized Zintl Ions [E₂Cd(C₆H₅)₃]³⁻ (E = Sn, Pb) with Tributyltinhydride: Synthesis and Isolation of [Sn₂CdSn[(CH₂)₃CH₂]₃]³⁻', (with Binbin Zhou, Mark S Denning, and Thomas A D Chapman), (2009), *Inorganic Chemistry* 48, pp.2899-2907

'Reductive Cleavage of Zn-C bonds by Group 14 Zintl Anions: Synthesis and Characterisation of [E₂ZnR]³⁻ (E = Ge, Sn, Pb; R = Mes, 'Pr)', (with Binbin Zhou, Mark S Denning, and Carl Jones), (2009), *Dalton Transactions*, pp.1571-1578

Robert Griffiths, 'An evolutionary algorithm to find associations in dense genetic maps', (with T G Clark, and M De Iorio), (2008), *IEEE Transactions on Evolutionary Computation* 12, No. 3, pp.297-306

'Importance sampling and the two-locus model with subdivided population structure', (with P A Jenkins, and Y S Song), (2008), *Adv. Appl. Prob.* 40, pp.473-500

'Ancestral inference from Microsatellite data by sequential importance sampling in subdivided populations' (with Y J Griffiths), in *Simulations, Genetics and Human Prehistory*, (2008), S Matsumura, P Forster, C Renfrew, C, (eds.), McDonald Institute Monographs, Chapter 13, pp.125-134

'A coalescent dual process in a Moran model with genic selection', (with A M Etheridge), (2009), *Theor. Popul. Biol.* 75, pp.320-330

Nick Hankins, 'Synthetic Sludge as a Physical and Chemical Analogue of Real Sludge in the Activated Sludge Process', (with N Hilal, and T P Nguyen), (2009), in *Sludge: Types, Treatment Processes and Disposal*, NOVA Science Publishers, Hauppauge, New York

'Operating Conditions Corresponding to Optimal Final Properties of Activated Sludge Using the DOE and RSM Techniques', (with T P Nguyen, and

N Hilal), (2009), *Separation Science and Technology*, 44:9, pp.2041-2066

'Process Intensification During Treatment of NOM-laden Raw Up Land Waters: Control and Impact of the Pre-Coagulation Regime During Ultra-filtration', (with R Price, and N A Debacher), (2009), *Desalination and Water Treatment* 8:1, pp.1-15

'Editorial: First UK-Israeli Workshop on the Application of Membrane Technology in Water Treatment and Desalination and 2nd Oxford Water and Membranes Research Event' 15th - 20th June 2008, (2009), *Desalination and Water Treatment* 8:1

'Enhanced Removal of Heavy Metal Ions Bound to Humic Acid by Polyelectrolyte Flocculation', presented at the 32nd Annual Meeting of the Brazilian Chemical Society, Fortaleza, CE, Brazil, 30th May - 2nd June 2009

Clive Holmes, 'Witchcraft and Possession at the Accession of James I; The Publication of Samuel Hasnett's *Declaration of Egregious Popish Impostures*', in *Witchcraft and the Act of 1604*, (2008), John Newton and Jo Bath (eds.), Leiden, Brill, pp.69-90

'Centre and Locality in Civil-War England' in *The English Civil War: Problems in Focus*, (2009), John Adamson (ed.), Basingstoke, pp.153-174

Lee Jones, 'ASEAN's Albatross: ASEAN's Burma Policy, from Constructive Engagement to Critical Disengagement', (2008), *Asian Security* 4:3, pp.271-93

'The Others': Gender and Conscientious Objection in the First World War', (2008), *Nordic Review of Masculinity Studies* 3:2, pp.99-113

'Democratisation and Foreign Policy: The Case of the ASEAN Inter-Parliamentary Myanmar Caucus', (2009), *Cambridge Review of International Affairs* 27:3, pp.387-406

Andrew Loveridge, 'Science and the recreational hunting of lions', (with C Packer, and A Dutton), in *Recreational hunting, conservation and rural livelihoods: science and practice* (2009), B Dickson, J Hutton, and B Adams, (eds.), Oxford, Blackwell Publishing

'Changes in home range size in relation to pride size and prey biomass in a semi-arid savanna', (with M Valeix, Z Davidson, F Murindagomo, H Fritz, and D W Macdonald), (2009), *Ecography*. DOI 10.1111/j.1600-0587.2009.05745.x

'Behavioral adjustments of African herbivores to predation risk by lions: spatiotemporal variations influence habitat use', (with M Valeix, S Chamailé-Jammes, et al), (2009), *Ecology*, 90, pp.23-30.

'Does the risk of encountering lions influence African herbivore behavior at waterholes?' (with M Valeix, Z Davidson, J E Hunt, F Murindagomo, and D W Macdonald), (2009), *Behavioral Ecology and Sociobiology*. DOI 10.1007/s00265-009-0760-3

David Macdonald, 'Is alloparenting helpful for Mednyi Island arctic foxes, *Alopex lagopus semenovi*?' (with E P Kruchenkova, M Goltsman, and S Sergeev), (2009), *Naturwissenschaften* 96, pp.457-466

'Prickly coexistence or blunt competition? *Opuntia refugia* in an invaded rodent community', (with S D Gregory SD), (2009), *Oecologia* 159, pp.225-236

'Lessons learnt and plans laid: seven awkward questions for the future of reintroductions', in *Reintroduction of Top-Order Predators*, 1st edition, (2009), M Hayward, and M Somers (eds.), Oxford, Wiley-Blackwell, pp.411-448

'Sex ratio variation and mixed pairs in roe deer: evidence for control of sex allocation?' (with P J Johnson), (2008), *Oecologia* 158, pp.361-370

'Male-Biased Movement In A High-Density Population Of The Eurasian Badger (*Meles Meles*)', (with C Newman, C D Buesching, and P J Johnson), (2008), *Journal Of Mammalogy* 89, pp.1077-1086

'Achilles' heel of sociality revealed by energetic poverty trap in cursorial hunters', (with G S A Rasmussen, M Gusset, and F Courchamp), (2008), *American Naturalist* 172, pp.508-518

Mary MacRobert, 'A Hymnographical Curiosity: Troparia Composed for the Psalter', in *Bibel, Liturgie und Frömmigkeit in der Slavia Byzantina. Festgabe für Hans Rothe zum 80. Geburtstag*, (2009), D Christians, D Stern, V S Tomelleri (eds.), Studies on Language and Culture in Central and Eastern Europe - SLCCEE, C Voss, (ed.) Bd. 3, Munich - Berlin, Verlag Otto Sagner, pp.243-266

Judith Mank, 'The W, X, Y and Z of sex chromosome dosage compensation', (2009), *Trends in Genetics* 25, pp.226-233

'Sex chromosomes and the evolution of sexual dimorphism: lessons from the genome', (2009) *American Naturalist* 173, pp.141-150

'Sex-linkage of sexually antagonistic genes is predicted by female, but not male-, effect in birds', (with H Ellegren), (2009), *Evolution* 63, pp.1464-1472

'All dosage compensation is local: Gene-by-gene regulation of sex-biased expression on the chicken Z chromosome', (with H Ellegren), (2009), *Heredity* 102, pp.312-320

'Are sex-biased genes more dispensable?' (with H Ellegren), (2009), *Biology Letters* 5 pp.409-412

'Evolutionary diversity and turn-over of sex determining mechanisms in teleost fishes', (with J C Avise), (2009), *Sexual Development* (forthcoming)

Gunther Martin, 'Hera', in *Der Neue Pauly, Supplement 5: Mythenrezeption. Die antike Mythologie in Literatur, Musik und Kunst von den Anfängen bis zur Gegenwart*, (2008), Stuttgart, pp.322-325

Divine Talk. Religious argumentation in Demosthenes, (2009), Oxford, OUP

Michael Monoyios, 'Optimal investment and hedging under partial and inside information', in *Advanced Financial Modelling*, (2009), H Albrecher, W Runggaldier, and W Schachermayer (eds.), Radon Series on Computational and Applied Mathematics 8, Walter de Gruyter

Anant Parekh, 'CRAC channels and Ca²⁺ signaling in mast cells', (with J Di Capite), (2009), *Immunological Reviews* 231, pp.45-58

'Coupling of Ca(2+) microdomains to spatially and temporally distinct cellular responses by the tyrosine kinase Syk', (with S W Ng, and C Nelson), (2009), *Journal of Biological Chemistry* 284, pp.24767-72

'Decoding of cytoplasmic Ca(2+) oscillations through the spatial signature drives gene expression', (with J Di Capite, and S W Ng), (2009), *Current Biology* 19, pp.853-858

'Intercellular Ca²⁺ wave propagation involving positive feedback between CRAC channels and cysteinyl leukotrienes', (with J Di Capite, A Shirley, C Nelson, and G Bates), (2009), *FASEB Journal* 22, pp.894-905

Gillian Peele, 'What a Difference a Few Decades Make: the Conservative Movement, Executive Power and the Constitution in the United States', (with Joel Aberbach) in *The Federal Nation: Perspectives on American Federalism*, Iwan Morgan and Philip Davies (eds.), (2008), Basingstoke, Palgrave Macmillan

Christopher Redman, 'Antepartum High-frequency Fetal Heart Rate Sinusoidal Rhythm: Computerized Detection and Fetal Anemia', (with A Reddy, and M Moulden), (2009), *Am J Obstet Gynecol* 200:407.e1-6

'Prevalence of Agonistic Autoantibodies Against the Angiotensin II Type 1 Receptor and Soluble fms-Like Tyrosine Kinase 1 in a Gestational Age-Matched Case Study', (with F Herse, S Verlohren, K Wenzel, J Pape, D N Muller, S Modrow, G Wallukat, F C Luft, and R Dechend), (2008), *Hypertension* 53, pp.393-8

'Computerized analysis of the normal fetal heart rate pattern throughout gestation', (with V Serra, J Bellver, and M Moulden), (2009), *Ultrasound Obstet Gynecol.* 34, pp.74-9

'Placental Stress and Pre-eclampsia: a Revised View', (with I L Sargent), (2009), *Placenta Suppl A:S*, pp.38-42

Nicholas Shrimpton, 'On George Steiner', *Areté*, 27, Winter 2008, pp.133-144

Claudio Sillero-Zubiri, 'The status of the world's land and marine mammals: diversity, threat, and knowledge', (with J Schipper, et al), (2008), *Science* 322, pp.225-230

'The Canidae' in *The Handbook of the Mammals of the World Vol 1. Carnivora*, (2009), D Wilson, and R Mittermeier (eds.), Barcelona, Lynx Edicions

Adrian Thomas, 'Smoke visualization of free-flying bumblebees indicates independent leading-edge vortices on each wing pair', (with R J Bomphrey, and G K Taylor), (2009), *Exp. Fluids*, (Published online before print, 2 April 2009), doi: 10.1007/s00348-009-0631-8

'Deformable wing kinematics in free-flying hoverflies', (with S M Walker, and G K Taylor), (in press), *Journal of the Royal Society Interface*

'Deformable wing kinematics in the desert locust: how and why do camber, twist and topography vary through the stroke?' (with S M Walker, and G K Taylor), (2008), *Journal of the Royal Society Interface* (Published online before print, 16 December 2008), 10.1098/rsif.2008.0435

'Photogrammetric reconstruction of high-resolution surface topographies and deformable wing kinematics of tethered locusts and free-flying hoverflies', (with S M Walker, and G K Taylor), (2008), *Journal of the Royal Society Interface* 10.1098/rsif.2008.0245

'New experimental approaches to the biology of flight control systems', (with G K Taylor, M Bacic, R J Bomphrey, A C Carruthers, J Gillies, and S M Walker), (2008), *J. Exp. Biol.* 211, 258-266. doi: 10.1242/jeb.012625

Alain Viala, *La culture littéraire*, (2009), Paris, Presses Universitaires de France

Christine Wong, 'Rebuilding Government for the 21st Century: Can China Incrementally Reform the Public Sector?' (forthcoming), *China Quarterly*, No. 200, December 2009; (an earlier version was published in Chinese in the *Social Sciences in China*, 2009 (3))

'The New Social and Economic Order in 21st Century China: Can the Government Bring a Kinder, Gentler Mode of Development?' in *Global Giant: Is China Changing the Rules of the Game?* (2009), Eva Paus, Penelope Prime, and Jon Western, (eds.), Basingstoke, Palgrave Macmillan

External Members of College Committees

Several major committees advise and make recommendations to Governing Body. We are particularly grateful for the valuable contribution from our external members of the following committees:

Investment Committee

Mr Richard Buxton, (1982 English)

Mr Rupert Tate, (1981 Modern Languages)

Strategy Committee

Ms Peninah Thomson, (1980 English)

Mr Bruce Webster, (1979 English)

Buildings Committee

Mr Michael Clarke, (1982 Mathematics)

Ms Carole Gannon, (1977 Geography)

Garden Committee

Mr Ken Burras

Remuneration Committee

Mr John Oughton

Dame Juliet Wheldon, (1968 Modern History)

LMH Association Committee 2008 - 2009

Mrs Mary Haynes, (Lambert 1959 History), President and Chairman

Miss Catherine Avent, OBE (1939 English), Vice-President

Mrs Sally Chilver, (Principal 1971-1979), Vice-President

Miss Elizabeth Mackenzie, (1941 English), Vice-President

Mrs Gabriel Sewell, (Linehan 1992 History), Hon. Secretary

Mr David Sewell, (1979 Mathematics), Hon. Treasurer

Dr Carolyn Carr, (Jones 1977 Chemistry) Editor, Brown Book

Miss Judith Garner, (1977 Lit. Hum.), Assistant Editor, Brown Book

Ms Alison Gomm, (1974 English), Assistant Editor, Brown Book

Dr Helen Barr, (Chignell 1979 English), Tutor in English

Mrs Margaret Hodgson, (Wise 1953 PPE)

Mr John Locker, (1994 History)

Mrs Marion Michell, (Cutler 1962 Chemistry)

Miss Gillian Peele, Tutor in Politics

Mr Andrew Reid, (1987 Mathematics)

Miss Rachael Wood, (1996 History)

Dr Nicholas Shrimpton, Vice-Principal, Tutor in English

Mr Peter Watson, Development Director

LMH Advisory Council 2008 - 2009

Mr Guy Monson, (1981 PPE), Chairman

Dr Frances Lannon, (1969 History), Principal, Vice-Chairman (ex-officio)

Mrs Mary Haynes, (Lambert 1959 History) President LMH Association, Vice-Chairman, (ex-officio)

Ms Jo Andrews, (1974, PPE)

Mr Richard Buxton, (1982 English)

Mrs Jenny Carey, (Dodge 1981 Educational Studies)

Mrs Sally Chilver, (Principal 1971-1979)

Mr Blair Crawford, (1982 Philosophy and Theology)

Dame Vivien Duffield, (Clare 1963 Modern Languages)

Dr Amanda Foreman, (1991 History)

Mr Martin Giles, (1985 PPE)

Mrs Diana Guy, (Eade 1962 Law)

Mrs Annette Haworth, (Dyer 1965 Mathematics)

Ms Nerys Jefford, (1981 Law)

Mrs Barbara Johnstone, (Clegg 1944 English)

Mrs Jacqueline Levene QC, (Perry 1970 Law)

Mrs Anna McNair Scott, (Colquhoun 1964 English)

Baroness Neville Jones, (1958 History)

Miss Diana Quick, (1964 English)

Mrs Hazel Sanger, (Archer 1959 PPE)

Mrs Anne Simor, (Crowe 1958 Modern Languages)

Mr Douglas Shaw, (1983 Geography)

Mr Neil Simpkins, (1984 Physics)

Ms Suzelle Smith, (Moss 1975 Politics)

Mr Richard Sommers, Fellow and Treasurer

Mr Rupert Tate, (1981 Modern Languages)

Professor Dame Margaret Turner Warwick, (Moore 1943 Physiology)

Mr Peter Watson, Fellow and Development Director, Secretary (ex officio)

This report was compiled by Janet Wardell.
Design: Richard Boxall Design Associates.
Photographs: Nick Read, Carrie Fehr

LMH Values

LMH VALUES AND PROMOTES:

scholarship



intellectual independence



the academic and personal
development of its students



diversity, openness,
and tolerance



equality of opportunity



excellence, for which it strives
in all its endeavours, academic
and non-academic, and which it
appreciates in the achievements
of its students, alumni, and staff.

Lady Margaret Hall
Oxford OX2 6QA
Tel: +44 (0)1865 274300
Fax: +44 (0)1865 274294
www.lmh.ox.ac.uk



LMH

Lady Margaret Hall